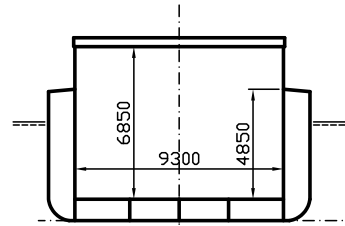
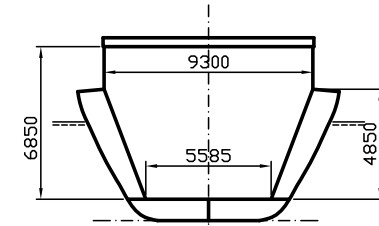


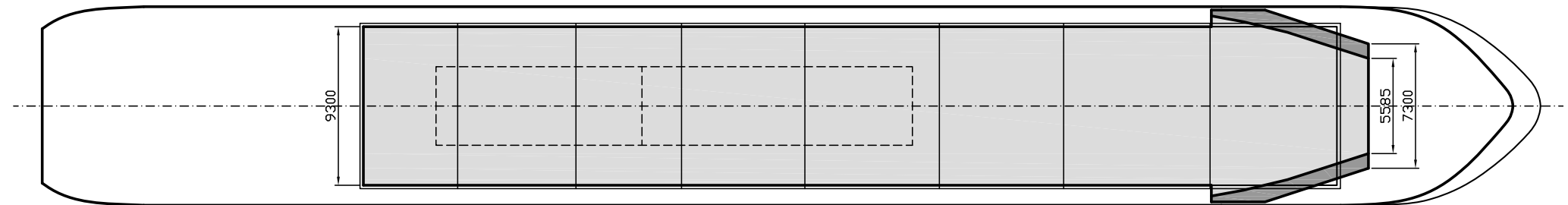
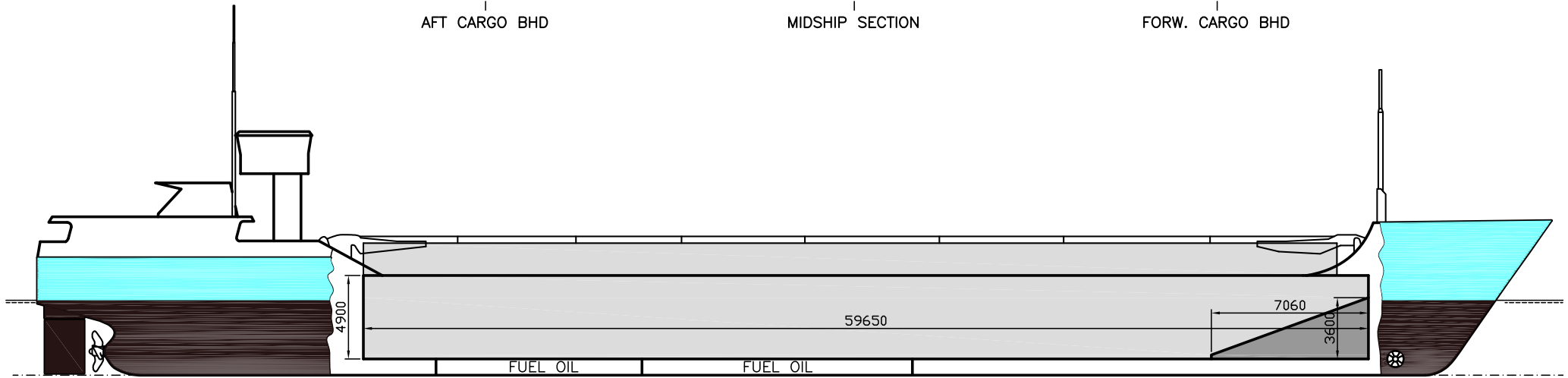
AFT CARGO BHD



MIDSHIP SECTION



FORW. CARGO BHD



If not otherwise specified:  
Dist/Dim in meters  
Weights in m.tones

Ex. Hestia  
IMO No 9177894  
Call sign 8PAM7  
Build 2000  
Flag BRB

All details given in good faith without any guarantee

Builders	
Classification	BV / I HULL MACH General cargo ship -heavycargo ((Tanktop 150 kN/m2 - Hatch cover 17.5kN/m2)); Conatiner ship Unrestricted navigation Ice, class, IB AUT-UMS
Length oa	89.6
Breadth mld	11.65
Depth mld	5.8
Draft summer	4.48
Deadweight summer draft	2439
Draft winter	4.39
Deadweight winter draft	2353
Gross tonnage	1846
Net tonnage	1081
Immersion(load draft) TPC	9.56
Mean draft of ship in heavy ballast	3.12
Distance from forward end of No. 1 hatch to aft end of last hatch	57.81
Hatch type	Kvaerner Multifold Crocodile
Container (TEU) capacity Hold / Deck	52 / 72

Max permissible load on deck/hatch-cover, mt/sqm	1.56
Max permissible load on tanktop, mt/sqm	15
Max air draft - 1	25.5
Max air draft - 2	8.5
Water ballast capacity	1118
MGO Capacity (Cbm)	150.11
Service speed, knots	11
A60	No
Bow thruster	190 kW, Yes
Boxed	Yes
Open hatch	Yes
Rhine fitted	Yes
Ammonium Nitrate fitted	Yes
FeSi fitted	Yes
Keel to top antenna fwd/aft	18.5 / 22.5
Keel to top antenna fwd/aft - lowered mast	11 / 12

**Hatch details:**

- a : Distance from waterline fully ballasted to top of hatch coamings
- b : Distance from waterline fully loaded to top of hatch coamings
- c : Distance from tank top to top of hatch coamings
- d : Max permissible loading on hatch covers
- e : Distance from ship's rail to inside hatch coamings
- f : Height of hatch coamings
- g : Hatch opening
- h : No. of Loadingholes on hatchcovers X diameter in mm

**Remarks:**

Vessel fitted with 2 movable bulkheads, 8 different positions.  
One bulkhead usually stowed in fwd. position, frame 111. Compartment No.1 then usually not used for bulk/breakbulk cargo.  
Free length on tanktop with one bulkhead in fwd. position and one bulkhead in aft storage position about 50.00m.  
Free length on tanktop with both bulkheads in aft storage position about 58.50m  
NAABSA Fitted

Htch#	a	b	c	d	e	f	g
1	4.68	3.32	6.85	1.56	1.18	2	57.81 x 9.3

Hold#	Bale		Grain		Hold dimensions
	cbm	cbft	cbm	cbft	
1	3582	126497	3696	130523	57.81 x 9.3 x 6.85

Compartments	a	b	c	d	e	f	g	h	i
	562	196	430	851	92	700	509	196	226

Communication	
Email	w-thames@wilsonfleet.no
Phone	47  48104713 Mobile
SatPhone	47  85 295 273 V-Sat