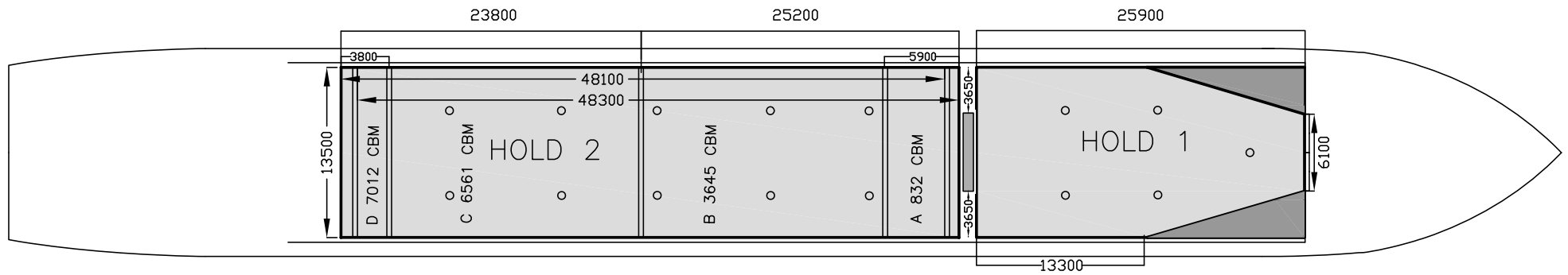
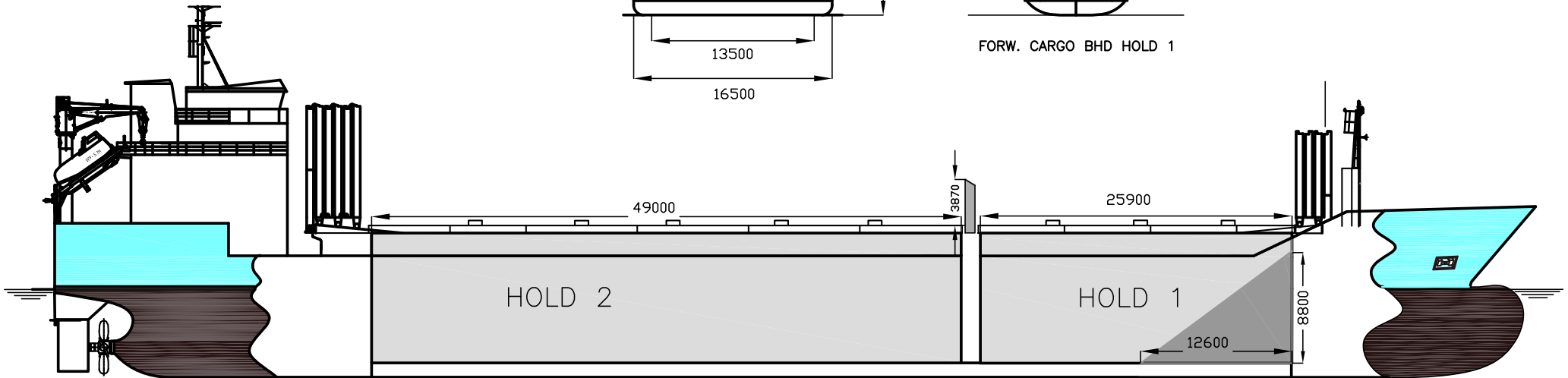


FORW. CARGO BHD HOLD 1



If not otherwise specified:
Dist/Dim in meters
Weights in m.tones

All details given in good faith without any guarantee

Builders	
Classification	DNV GL / 100 A5 E1 Multi-purpose dry cargo ship BMW DBC SOLAS-II-2 Reg.19 G Strengthened for heavy cargo MC E1 AUT
Length oa	123.1
Breadth mld	16.5
Depth mld	10.1
Draft summer	7.62
Deadweight summer draft	8691
Draft winter	7.461
Deadweight winter draft	8409
Gross tonnage	6118
Net tonnage	3047
Immersion(load draft) TPC	17.65
Mean draft of ship in heavy ballast	4.09
Distance from forward end of No. 1 hatch to aft end of last hatch	75.94
Hatch type	Kvaerner Multifold Crocodile
Container (TEU) capacity Hold / Deck	0 / 0

Hatch details:

- a : Distance from waterline fully ballasted to top of hatch coamings
- b : Distance from waterline fully loaded to top of hatch coamings
- c : Distance from tank top to top of hatch coamings
- d : Max permissible loading on hatch covers
- e : Distance from ship's rail to inside hatch coamings
- f : Height of hatch coamings
- g : Hatch opening
- h : No. of Loadingholes on hatchcovers X diameter in mm

Remarks:

Hold 1 with sloping plates 12.6m forward (see drawing).
 Hold 2 boxed, one movable bulkhead in hold no. 2, 4 different positions + two parking positions. Bulkhead dim LxBxH 0.4m x 13.5m x 10.545m.
 Cubic capacity hold 2: 7050 cbm with bulkhead in fwd parking position, 7064 cbm with bulkhead in aft parking position, 7101 cbm with bulkhead in working position. Cubic capacity hold 2 without bulkhead is 7174 cbm.
 Free space on hatch on each side of ventilation construction is 3.65 m sideways.
 Lashing points: 78 pcs in holds, 42 pcs fitted on main deck, 47 pcs fitted on hatch coaming stanchion.
 * Some areas of hatch covers are protruding downward 18 cm inside cargo hold.

Htch#	a	b	c	d	e	f	g	h
1	8.5	4.6	10.85	3.5	1.5	2	25.9 x 13.5	5 x 700
2	8.5	4.6	10.85	3.5	1.5	2	49.7 x 13.5	10 x 700

Hold#	Bale		Grain		Hold dimensions
	cbm	cbft	cbm	cbft	
1	3613	127592	3613	127592	25.9 x 13.5 x 10.845
2	6936	244955	6936	244955	49 x 13.5 x 10.845

Compartments	a	b	c	d	e
	832	1761	3652	6561	7012

Ex.
 IMO No 9430947
 Call sign LANA8
 Build 2010
 Flag NIS

Max permissible load on deck/hatch-cover, mt/sqm	3.5
Max permissible load on tanktop, mt/sqm	15
Max air draft - 1	28.23
Max air draft - 2	0
Water ballast capacity	2880
MGO Capacity (Cbm)	65.2
Service speed, knots	13
A60	No
Bow thruster	400 kW, Yes
Boxed	Yes
Open hatch	Yes
Rhine fitted	No
Ammonium Nitrate fitted	Yes
FeSi fitted	Yes
Keel to top antenna fwd/aft	23.2 / 32.32
Keel to top antenna fwd/aft - lowered mast	0 / 0

Communication	
Email	w-north@wilsonfleet.no
Phone	47 47613301 Mobile
SatPhone	47 85 290 070 V-Sat