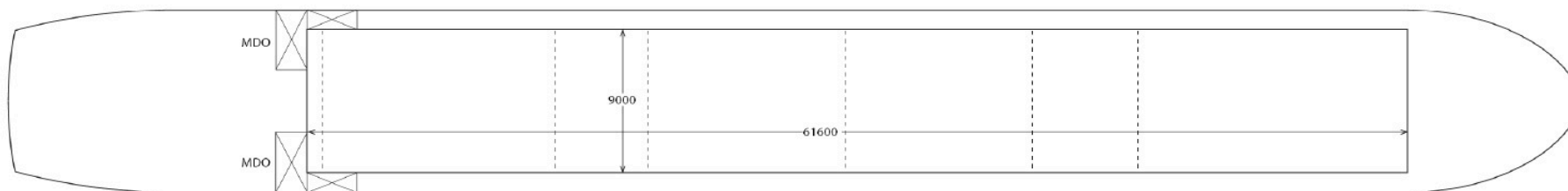
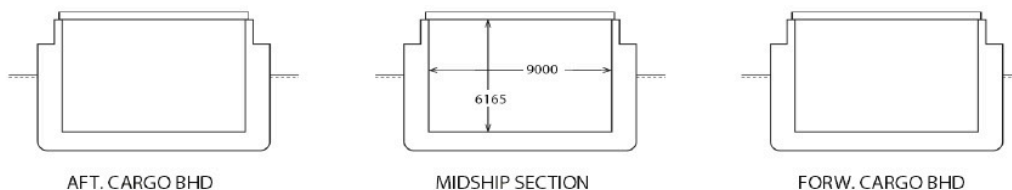


HORIZONTAL PLANE



VERTICAL PLANE



If not otherwise specified:
Dist/Dim in meters
Weights in m.tones

Ex. N/A
IMO No 9557408
Call sign 8pmf
Build 2016
Flag BRB

All details given in good faith without any guarantee

Builders	
Classification	DNV / 1A General dry cargo ship Container E0 Strengthened(IB) TMON(oil lubricated)
Length oa	87.91
Breadth mld	11.41
Depth mld	5.8
Draft summer	4.1
Deadweight summer draft	2619
Draft winter	4.02
Deadweight winter draft	2519
Gross tonnage	1904
Net tonnage	878
Immersion(load draft) TPC	9.6
Mean draft of ship in heavy ballast	3.3
Distance from forward end of No. 1 hatch to aft end of last hatch	61.9
Hatch type	Pontoon, Gantry Crane
Container (TEU) capacity Hold / Deck	0 / 0

Max permissible load on deck/hatch-cover, mt/sqm	1.5
Max permissible load on tanktop, mt/sqm	15
Max air draft - 1	20.3
Max air draft - 2	10
Water ballast capacity	1613
MGO Capacity (Cbm)	176
Service speed, knots	9
A60	Yes
Bow thruster	150 kW, Yes
Boxed	Yes
Open hatch	Yes
Rhine fitted	No
Ammonium Nitrate fitted	Yes
FeSi fitted	Yes
Keel to top antenna fwd/aft	19 / 24.3
Keel to top antenna fwd/aft - lowered mast	11.55 / 13.34

Hatch details:

- a : Distance from waterline fully ballasted to top of hatch coamings
- b : Distance from waterline fully loaded to top of hatch coamings
- c : Distance from tank top to top of hatch coamings
- d : Max permissible loading on hatch covers
- e : Distance from ship's rail to inside hatch coamings
- f : Height of hatch coamings
- g : Hatch opening
- h : No. of Loadingholes on hatchcovers X diameter in mm

Remarks:

- Hold dimensions are excl. bulkheads
- 2 moveable bulkheads, 6 different positions + 2 storage positions aft
- Storage pos for both bulkheads aft, total 0,54m
- Cbm capacity without bulkheads: 3422 m3
- A60: Bulkheads between cargo hold and machinery spaces of category A are insulated to A-60 standard.

Htch#	a	b	c	d	e	f	g
1	4.1	3.1	6.16	1.5	1	1.3	46.5 x 9

Hold#	Bale		Grain		Hold dimensions
	cbm	cbft	cbm	cbft	
1	3409	120388	3409	120388	61.6 x 9 x 6.16

Compartments	a	b	c	d	e	f	g	h
	813	307	552	570	270	686	115	24

Communication	
Email	w-bergen@wilsonfleet.no
Phone	47 475 07 750 Mobile
SatPhone	47 85 290 360 V-Sat