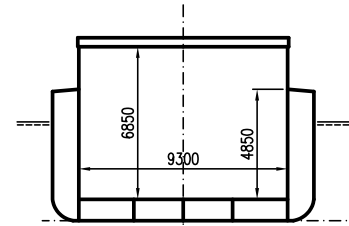
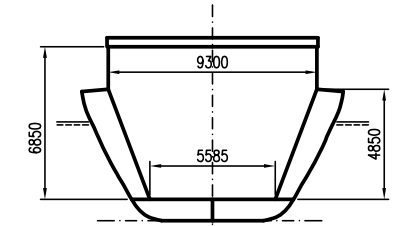


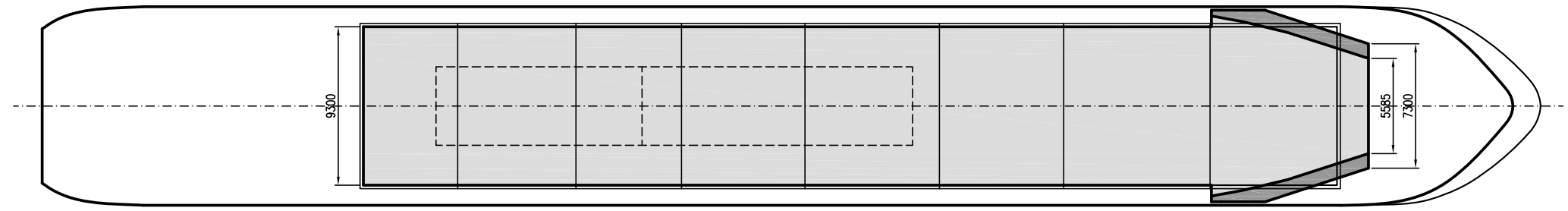
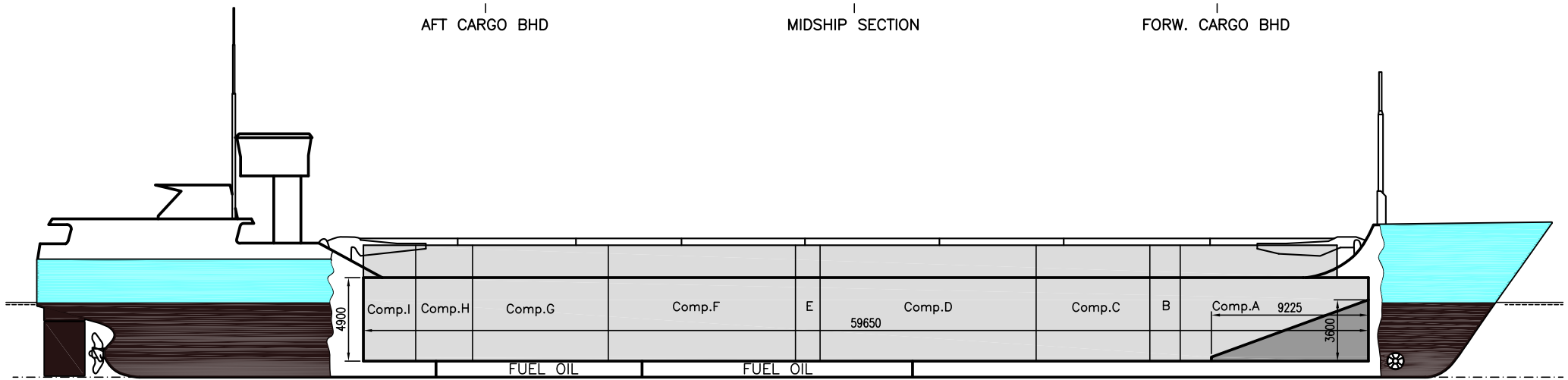
AFT CARGO BHD



MIDSHIP SECTION



FORW. CARGO BHD



If not otherwise specified:  
Dist/Dim in meters  
Weights in m.tones

Ex. IMO No 9199256  
Call sign V2OU  
Build 2000  
Flag ATG

All details given in good faith without any guarantee

Builders	
Classification	BV / I Hull MACH General cargo ship; Container ship, Unrestricted navigation Heavycargo (Tanktop 150kN/2 - Hatch cover 17.5kN/m2) Ice class IB, AUT-UMS
Length oa	89.6
Breadth mld	11.65
Depth mld	5.8
Draft summer	4.48
Deadweight summer draft	2460
Draft winter	4.38
Deadweight winter draft	2370
Gross tonnage	1846
Net tonnage	1081
Immersion(load draft) TPC	9.56
Mean draft of ship in heavy ballast	3.3
Distance from forward end of No. 1 hatch to aft end of last hatch	58.73
Hatch type	Kvaerner Multifold Crocodile
Container (TEU) capacity Hold / Deck	52 / 72

Max permissible load on deck/hatch-cover, mt/sqm	1.56
Max permissible load on tanktop, mt/sqm	15
Max air draft - 1	18.8
Max air draft - 2	6.6
Water ballast capacity	1132
MGO Capacity (Cbm)	151
Service speed, knots	11
A60	No
Bow thruster	185 kW, Yes
Boxed	Yes
Open hatch	Yes
Rhine fitted	Yes
Ammonium Nitrate fitted	Yes
FeSi fitted	Yes
Keel to top antenna fwd/aft	19 / 22
Keel to top antenna fwd/aft - lowered mast	10.5 / 11.1

**Hatch details:**

- a : Distance from waterline fully ballasted to top of hatch coamings
- b : Distance from waterline fully loaded to top of hatch coamings
- c : Distance from tank top to top of hatch coamings
- d : Max permissible loading on hatch covers
- e : Distance from ship's rail to inside hatch coamings
- f : Height of hatch coamings
- g : Hatch opening
- h : No. of Loadingholes on hatchcovers X diameter in mm

**Remarks:**

- Vessel fitted with 2 movable bulkheads, 8 different positions.
- Free length on tanktop with both bulkheads in aft storage position about 58.50m.
- Cement holes are not circular 520mm x 720mm

Htch#	a	b	c	d	e	f	g	h
1	4.6	3.4	6.65	1.5	1.2	2	57.81 x 9.3	16 x 520

Hold#	Bale		Grain		Hold dimensions
	cbm	cbft	cbm	cbft	
1	3750	132430	3750	132430	57.81 x 9.3 x 6.85

Compartments	a	b	c	d	e	f	g	h	i
	562	196	430	851	92	700	508	196	162

Communication	
Email	theseus@fleet-sunship.de
Phone	49 17360033370 Mobile
SatPhone	49 405 729 00 51 V-Sat