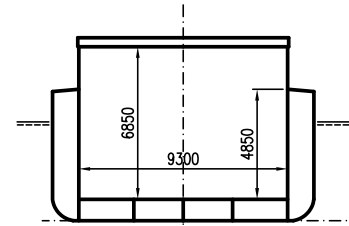
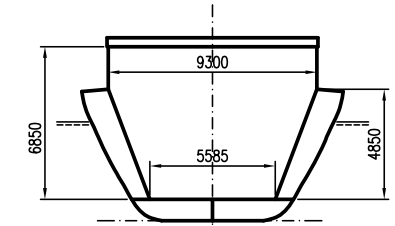


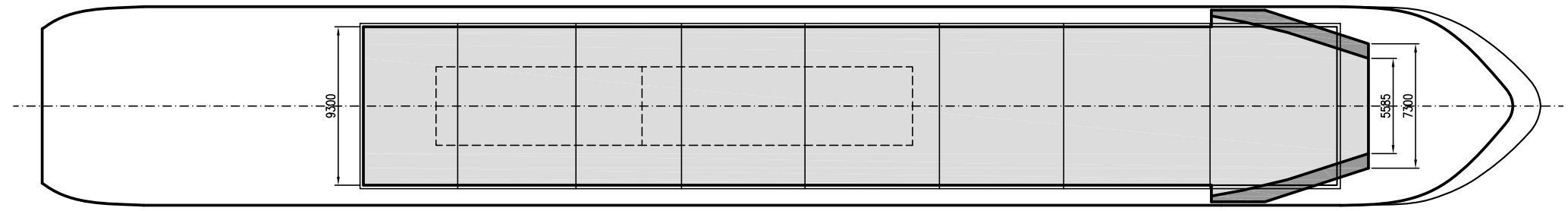
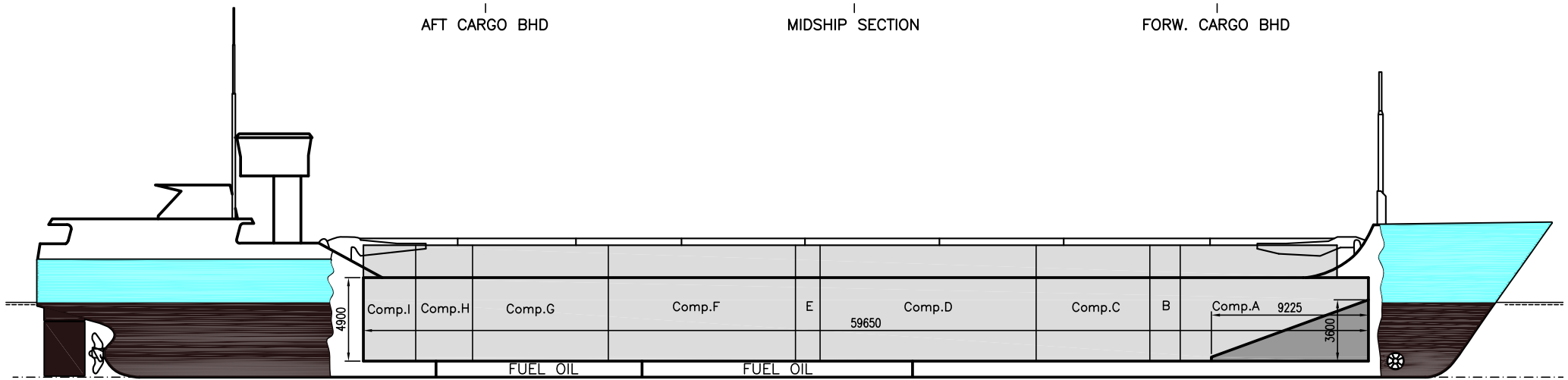
AFT CARGO BHD



MIDSHIP SECTION



FORW. CARGO BHD



If not otherwise specified:
Dist/Dim in meters
Weights in m.tones

All details given in good faith without any guarantee

Builders	
Classification	BV / I HULL MACH General Cargo ship- -heavycargo((Tank top 150 kN/m2, Hatch cover 17.5 kN/m2)); Container ship (Tank top 150 kN/m2, Hatch cover 17.5 kN/m2) Inrestricted navigation Ice Class 1B, AUT-UMS
Length oa	89.71
Breadth mld	11.65
Depth mld	5.8
Draft summer	4.48
Deadweight summer draft	2460
Draft winter	4.39
Deadweight winter draft	2370
Gross tonnage	1846
Net tonnage	1081
Immersion(load draft) TPC	9.56
Mean draft of ship in heavy ballast	3.12
Distance from forward end of No. 1 hatch to aft end of last hatch	57.81
Hatch type	Kvaerner Multifold Crocodile
Container (TEU) capacity Hold / Deck	52 / 72

Ex. 9234317
IMO No
Call sign V2AB4
Build 2000
Flag ATG

Max permissible load on deck/hatch-cover, mt/sqm	1
Max permissible load on tanktop, mt/sqm	15
Max air draft - 1	19.88
Max air draft - 2	8.48
Water ballast capacity	1118
MGO Capacity (Cbm)	150.11
Service speed, knots	11
A60	No
Bow thruster	184 kW, Yes
Boxed	Yes
Open hatch	Yes
Rhine fitted	Yes
Ammonium Nitrate fitted	Yes
FeSi fitted	Yes
Keel to top antenna fwd/aft	0 / 23
Keel to top antenna fwd/aft - lowered mast	0 / 11.6

Hatch details:

- a : Distance from waterline fully ballasted to top of hatch coamings
- b : Distance from waterline fully loaded to top of hatch coamings
- c : Distance from tank top to top of hatch coamings
- d : Max permissible loading on hatch covers
- e : Distance from ship's rail to inside hatch coamings
- f : Height of hatch coamings
- g : Hatch opening
- h : No. of Loadingholes on hatchcovers X diameter in mm

Remarks:

Vessel fitted with 2 movable bulkheads, 8 different positions.
Free length on tanktop with both bulkheads in aft storage position about 58.50m
A60
NAABSA Fitted

Htch#	a	b	c	d	e	f	g	h
1	4.68	3.32	6.85	1.56	1.18	2	57.81 x 9.3	15 x 400

Hold#	Bale		Grain		Hold dimensions
	cbm	cbft	cbm	cbft	
1	3582	126497	3674	129746	57.81 x 9.3 x 6.85

Compartments	a	b	c	d	e	f	g	h	i
	562	196	430	851	92	700	508	196	226

Communication	
Email	delia@fleet-sunship.de
Phone	49 1732005103 Mobile
SatPhone	49 41616019983 V-Sat