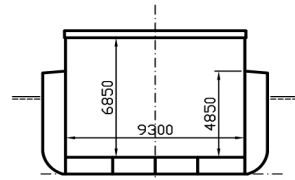
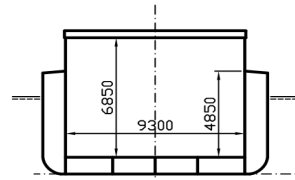




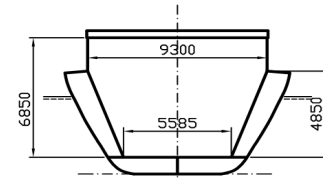
# WILSON THAMES



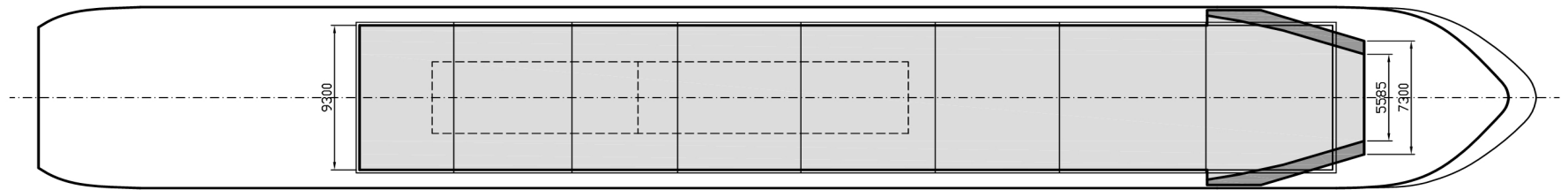
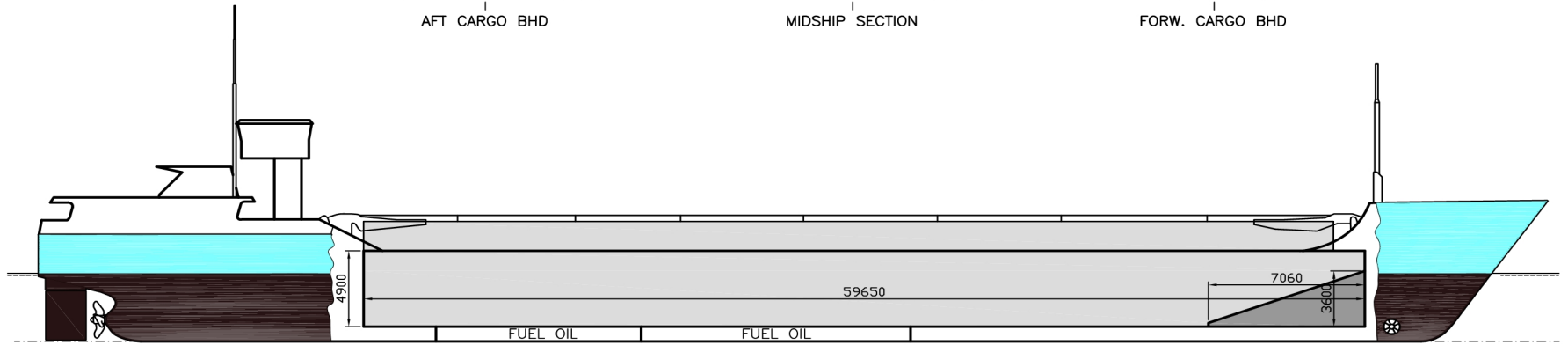
AFT CARGO BHD



MIDSHIP SECTION



FORW. CARGO BHD



# Wilson Thames

If not otherwise specified :  
Dist/Dim in meters  
Weights in m.tones

**Ex. Hestia**  
**IMO NO 9177894**  
**CALL SIGN 8PAM7**  
**BUILD 2000**  
**FLAG Barbados**

All details given in good faith without any guarantee

<b>Builders</b>	<b>TULCEA Shipyard S/A, Romania</b>	<b>Max permissible load on deck/hatch-cover, mt/sqm</b>	<b>1</b>
<b>Classification</b>	BV / I 3/3 E AUT MC Fin/Swe Ice Class 1B	<b>Max permissible load on tanktop, mt/sqm</b>	<b>15</b>
<b>Length oa</b>	89,6	<b>Max air draft - 1</b>	<b>25,5</b>
<b>Breadth mld</b>	11,65	<b>Max air draft - 2</b>	<b>8,5</b>
<b>Depth mld</b>	5,8	<b>Water ballast capacity</b>	<b>1118</b>
<b>Draft summer</b>	4,48	<b>MGO Capacity (Cbm)</b>	<b>150,11</b>
<b>Deadweight summer draft</b>	2460	<b>IFO Capacity (Cbm)</b>	<b>0</b>
<b>Draft winter</b>	4,39	<b>Service speed, knots</b>	<b>11</b>
<b>Deadweight winter draft</b>	2370	<b>Cargo gear</b>	<b>No</b>
<b>Gross tonnage</b>	1846	<b>Bow thruster</b>	<b>190 kW, Yes</b>
<b>Net tonnage</b>	1081	<b>Boxed</b>	<b>Yes</b>
<b>Immersion(load draft) TPC</b>	9,56	<b>Open hatch</b>	<b>Yes</b>
<b>Mean draft of ship in heavy ballast</b>	3,12	<b>Rhine fitted</b>	<b>Yes</b>
<b>Distance from forward end of No.1 Hatch to aft end of last hatch</b>	57,81	<b>Ammonium Nitrate fitted</b>	<b>Yes</b>
<b>Hatch type</b>	Kvaerner Multifold Crocodile	<b>FeSi fitted</b>	<b>Yes</b>
<b>Container (TEU) capacity Hold / Deck</b>	52 / 72	<b>Keel to top antenna fwd/aft</b>	<b>0 / 23</b>
<b>Hatch details:</b>	<b>Remarks:</b>	<b>Keel to top antenna fwd/aft - lowered mast</b>	<b>0 / 11,6</b>

- a : Distance from waterline fully ballasted to top of hatch coamings
- b : Distance from waterline fully loaded to top of hatch coamings
- c : Distance from tank top to top of hatch coamings
- d : Max permissible loading on hatch covers
- e : Distance from ship's rail to inside hatch coamings
- f : Height of hatch coamings
- g : Hatch opening
- h : No. of Loadingholes on hatchcovers X diameter in mm

Vessel fitted with 2 movable bulkheads, 8 different positions.  
One bulkhead usually stowed in fwd. position, frame 111. Compartment No.1 then usually not used for bulk/breakbulk cargo.  
Free length on tanktop with one bulkhead in fwd. position and one bulkhead in aft storage position about 50.00m.  
Free length on tanktop with both bulkheads in aft storage position about 58.50m  
NAABSA Fitted

Htch#	a	b	c	d	e	f	g	h
1	4,68	3,32	6,85	1,56	1,18	2	57,81 x 9,3	0 x 0

Hold #	Bale		Grain		Hold dimensions
	cbm	cbft	cbm	cbft	
1	3582	126497	3696	130523	57,81 x 9,3 x 6,85

Communication	
Type	No
Phone	+47 48104713

Email w-thames@wilsonfleet.no

Compartments	A	B	C	D	E	F	G	H	I	J	K	L	M	N	O	P
	562	196	430	851	92	700	509	196	226	0	0	0	0	0	0	0