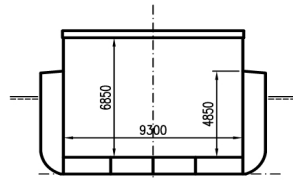
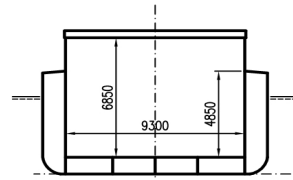




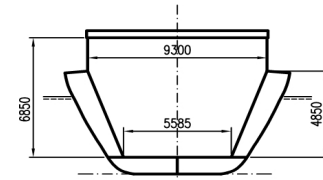
WILSON MERSEY



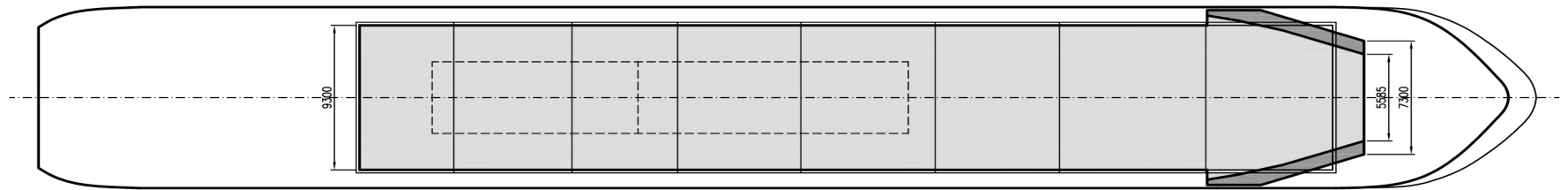
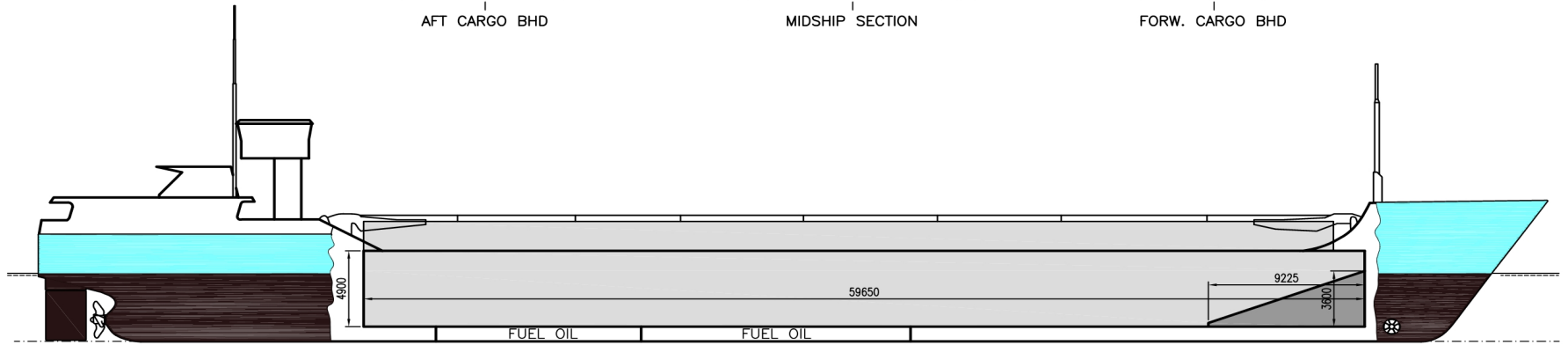
AFT CARGO BHD



MIDSHIP SECTION



FORW. CARGO BHD





Wilson Mersey

If not otherwise specified :
Dist/Dim in meters
Weights in m.tones

All details given in good faith without any guarantee

Ex. Arion
IMO NO 9177868
CALL SIGN 8PAM6
BUILD 1999
FLAG Barbados

Builders	TULCEA Shipyard S/A, Romania	Max permissible load on deck/hatch-cover, mt/sqm	1.56
Classification	BV / I HULL MACH, General cargo ship -heavycago ((Tanktop 150 kN/2 - Hatch cover 17.5kN/m2))) Container ship Unrestricted Navigation Ice class IB, AUT-UMS	Max permissible load on tanktop, mt/sqm	15
Length oa	89.6	Max air draft - 1	19.88
Breadth mld	11.65	Max air draft - 2	8.48
Depth mld	5.8	Water ballast capacity	1100
Draft summer	4.49	MGO Capacity (Cbm)	147
Deadweight summer draft	2460	IFO Capacity (Cbm)	0
Draft winter	4.38	Service speed, knots	11
Deadweight winter draft	2370	Cargo gear	No
Gross tonnage	1846	Bow thruster	185 kW, Yes
Net tonnage	1081	Boxed	No
Immersion(load draft) TPC	10	Open hatch	Yes
Mean draft of ship in heavy ballast	3.2	Rhine fitted	Yes
Distance from forward end of No.1 Hatch to aft end of last hatch	57.81	Ammonium Nitrate fitted	Yes
Hatch type	Kvaerner Multifold Crocodile	FeSi fitted	Yes
Container (TEU) capacity Hold / Deck	52 / 36	Keel to top antenna fwd/aft	0 / 23
		Keel to top antenna fwd/aft - lowered mast	0 / 11.6

Hatch details:

- a : Distance from waterline fully ballasted to top of hatch coamings
b : Distance from waterline fully loaded to top of hatch coamings
c : Distance from tank top to top of hatch coamings
d : Max permissible loading on hatch covers
e : Distance from ship's rail to inside hatch coamings
f : Height of hatch coamings
g : Hatch opening
h : No. of Loadingholes on hatchcovers X diameter in mm

Remarks:

Vessel fitted with 2 movable bulkheads, 8 different positions.
Free length on tanktop with both bulkheads in aft storage position about 58.50m.

Htch#	a	b	c	d	e	f	g	h
1	4.68	3.32	6.85	1.56	1.18	2	57.81 x 9.3	0 x 0

Hold #	Bale		Grain		Hold dimensions
	cbm	cbft	cbm	cbft	
1	3582	126512	3747	132307	57.81 x 9.3 x 6.85

Communication

Type	No
Phone	+47 90813286

Email Wilson Mersey <w-mersey@wilsonfleet.no>

Compartments	A	B	C	D	E	F	G	H	I	J	K	L	M	N	O	P
	562	196	430	851	92	700	508	196	226	0	0	0	0	0	0	0