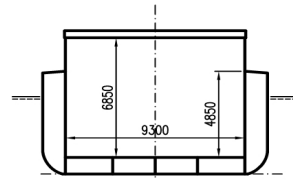
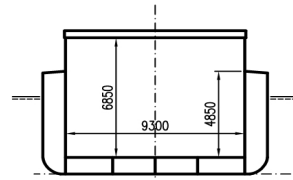




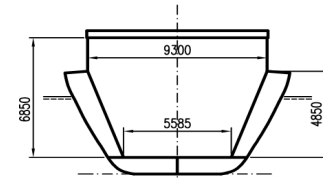
# WILSON ODRA



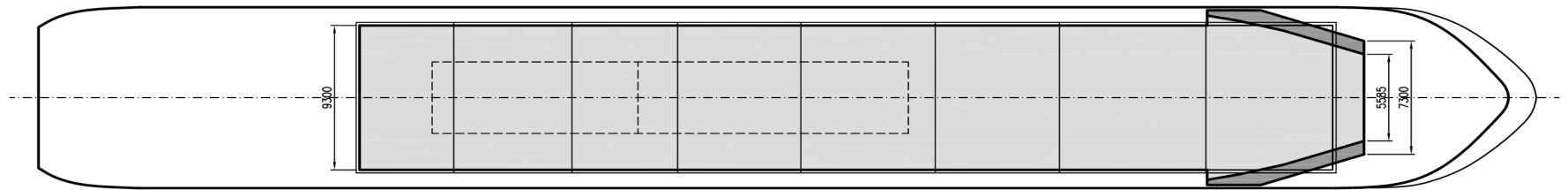
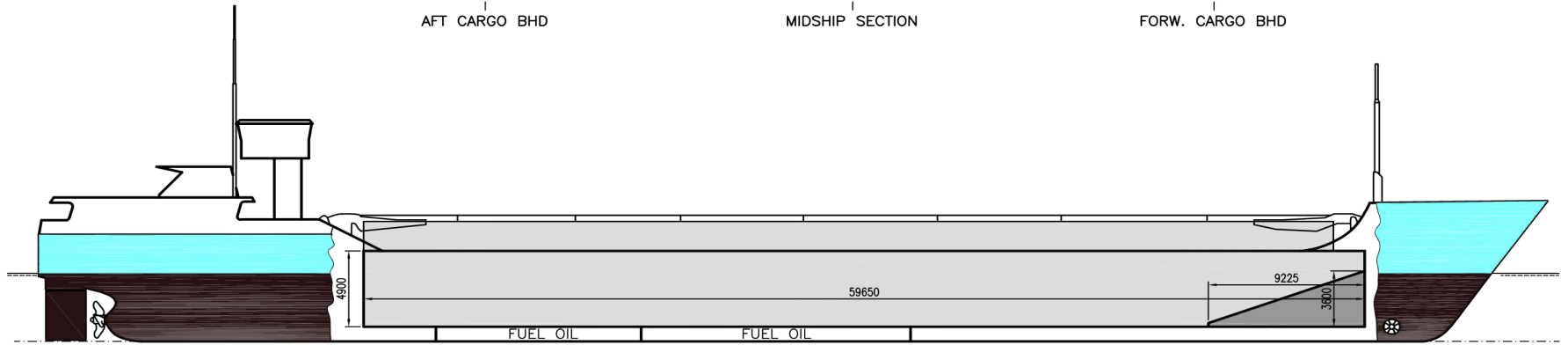
AFT CARGO BHD



MIDSHIP SECTION



FORW. CARGO BHD



# Wilson Odra

If not otherwise specified :  
Dist/Dim in meters  
Weights in m.tones

**Ex.**  
**IMO NO** 9177882  
**CALL SIGN** V2AD8  
**BUILD** 1999  
**FLAG** Antigua and Barbuda

All details given in good faith without any guarantee

<b>Builders</b>	Santierul Naval Tulcea, [None]	<b>Max permissible load on deck/hatch-cover, mt/sqm</b>	1.56
<b>Classification</b>	DNV GL / +100 A5 E2 MC E2 AUT	<b>Max permissible load on tanktop, mt/sqm</b>	15
<b>Length oa</b>	89.75	<b>Max air draft - 1</b>	19.5
<b>Breadth mld</b>	11.65	<b>Max air draft - 2</b>	6.2
<b>Depth mld</b>	5.8	<b>Water ballast capacity</b>	1118
<b>Draft summer</b>	4.48	<b>MGO Capacity (Cbm)</b>	149
<b>Deadweight summer draft</b>	2420	<b>IFO Capacity (Cbm)</b>	0
<b>Draft winter</b>	4.38	<b>Service speed, knots</b>	11
<b>Deadweight winter draft</b>	2320	<b>Cargo gear</b>	No
<b>Gross tonnage</b>	1846	<b>Bow thruster</b>	185 kW, Yes
<b>Net tonnage</b>	1081	<b>Boxed</b>	No
<b>Immersion(load draft) TPC</b>	9.56	<b>Open hatch</b>	Yes
<b>Mean draft of ship in heavy ballast</b>	3.2	<b>Rhine fitted</b>	Yes
<b>Distance from forward end of No.1 Hatch to aft end of last hatch</b>	58.73	<b>Ammonium Nitrate fitted</b>	Yes
<b>Hatch type</b>	Kvaerner Multifold Crocodile	<b>FeSi fitted</b>	No
<b>Container (TEU) capacity Hold / Deck</b>	52 / 72	<b>Keel to top antenna fwd/aft</b>	0 / 22.8
<b>Hatch details:</b>		<b>Keel to top antenna fwd/aft - lowered mast</b>	0 / 13.5

- a : Distance from waterline fully ballasted to top of hatch coamings
- b : Distance from waterline fully loaded to top of hatch coamings
- c : Distance from tank top to top of hatch coamings
- d : Max permissible loading on hatch covers
- e : Distance from ship's rail to inside hatch coamings
- f : Height of hatch coamings
- g : Hatch opening
- h : No. of Loadingholes on hatchcovers X diameter in mm

**Remarks:**

Vessel fitted with 2 movable bulkheads, 8 different positions.  
A60

Htch#	a	b	c	d	e	f	g	h
1	4.68	3.32	6.85	1.56	1.18	2	57.81 x 9.3	0 x 0

Hold #	Bale		Grain		Hold dimensions
	cbm	cbft	cbm	cbft	
1	3512	124025	3680	129958	57.81 x 9.3 x 6.85

**Communication**

Type	No
Phone	+49 1731032022

Email Wilson Odra <voerde@fleet-online.de>

Compartments	A	B	C	D	E	F	G	H	I	J	K	L	M	N	O	P
	492	196	430	851	92	700	508	196	226	0	0	0	0	0	0	0