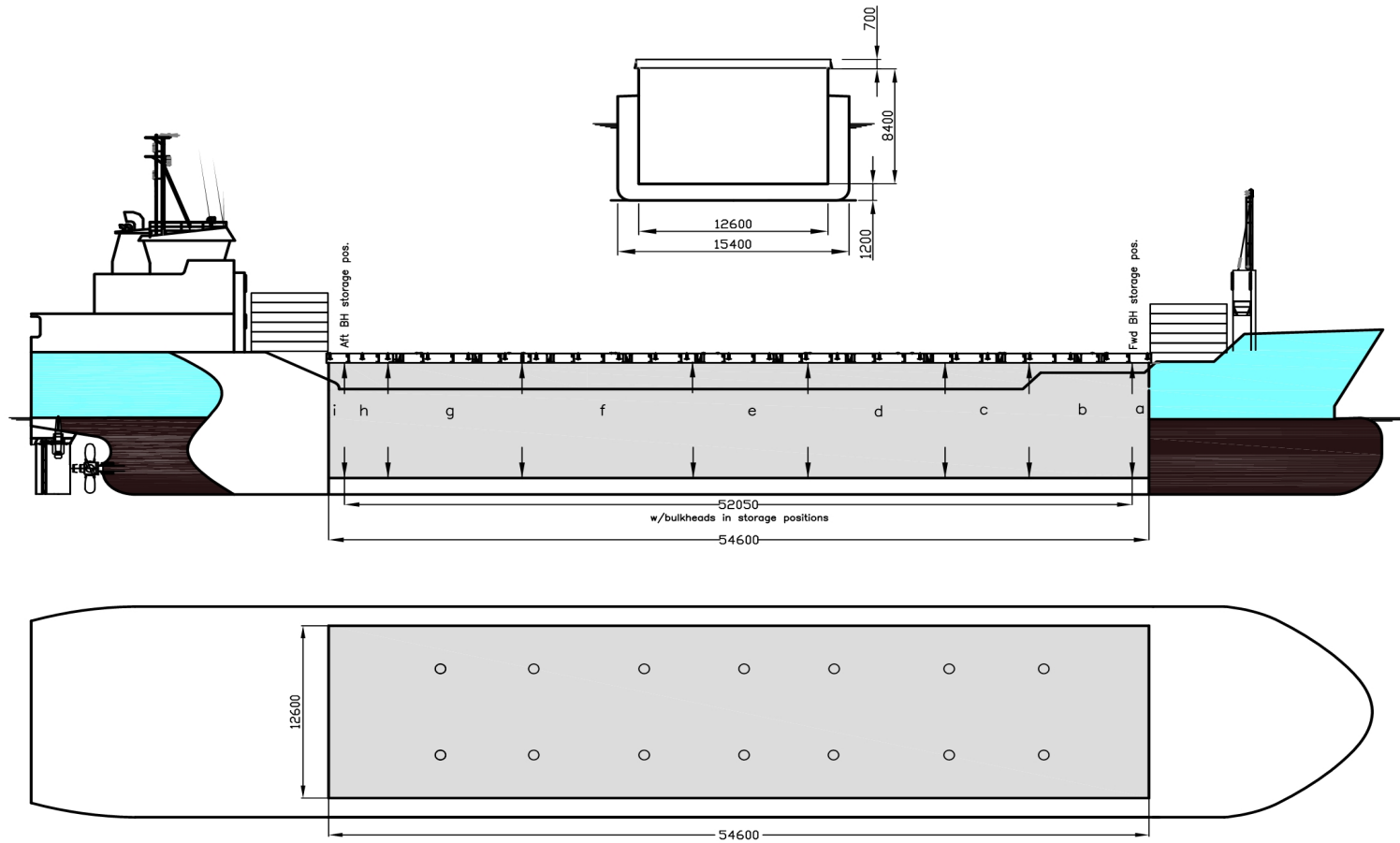




WILSON FARSUND

DEADWEIGHT GROUP
4500 dwt





Wilson Farsund

If not otherwise specified :
Dist/Dim in meters
Weights in m.tones

All details given in good faith without any guarantee

Ex.
IMO NO 9491733
CALL SIGN 8PAE7
BUILD 2012
FLAG Barbados

Builders	Shandong Baibuting Shipbuilding, Rong Cheng, China, [None]	Max permissible load on deck/hatch-cover, mt/sqm	1.75
Classification	DNV GL / 100 A5 E1 Multi-purpose dry cargo ship BWM DBC Solas-II-2 Reg19 G Hatchcoverless Strengthened for heavy cargo MC E1 AUT	Max permissible load on tanktop, mt/sqm	15
Length oa	89.97	Max air draft - 1	22.94
Breadth mld	15.4	Max air draft - 2	0
Depth mld	7.6	Water ballast capacity	2026
Draft summer	5.8	MGO Capacity (Cbm)	79.6
Deadweight summer draft	4534	IFO Capacity (Cbm)	144.8
Draft winter	5.68	Service speed, knots	12
Deadweight winter draft	4380	Cargo gear	No
Gross tonnage	3561	Bow thruster	250 kW, Yes
Net tonnage	1590	Boxed	Yes
Immersion(load draft) TPC	12.7	Open hatch	Yes
Mean draft of ship in heavy ballast	4.06	Rhine fitted	No
Distance from forward end of No.1 Hatch to aft end of last hatch	54.8	Ammonium Nitrate fitted	Yes
Hatch type	Pontoon, Gantry Crane	FeSi fitted	Yes
Container (TEU) capacity Hold / Deck	0 / 0	Keel to top antenna fwd/aft	22.8 / 27
		Keel to top antenna fwd/aft - lowered mast	0 / 0

Hatch details:

- a : Distance from waterline fully ballasted to top of hatch coamings
b : Distance from waterline fully loaded to top of hatch coamings
c : Distance from tank top to top of hatch coamings
d : Max permissible loading on hatch covers
e : Distance from ship's rail to inside hatch coamings
f : Height of hatch coamings
g : Hatch opening
h : No. of Loadingholes on hatchcovers X diameter in mm

Remarks:

2 moveable bulkheads, 6 working positions + 2 storage postions.
Pontoon type hatch with 11 pontoons, pontoons can be opened indepentently.
sequentially only: open - 2 odd panels + 1 even panel, close - 2 even panels + 1 odd panel.
Hold capacity with bulkheads in storage positions: 5508,9 m3.
Hold capacity with bulkheads in working positions: 5683,6 m3.
Bulkhead dim LxBxH 0,45 x 12,60 x 8,40.

Htch#	a	b	c	d	e	f	g	h
1	5.54	3.8	8.4	1.75	1.4	2	54.6 x 12.6	14 x 700

Hold #	Bale		Grain		Hold dimensions
	cbm	cbft	cbm	cbft	
1	5509	194548	5509	194539	52.05 x 12.6 8.4

Communication

Type	No
Phone	+47 91827944
SatPhone	+881677707244
Email	w-farsund@wilsonfleet.no

Compartments	A	B	C	D	E	F	G	H	I	J	K	L	M	N	O	P
	87	684	545	916	767	1155	899	305	87	0	0	0	0	0	0	0