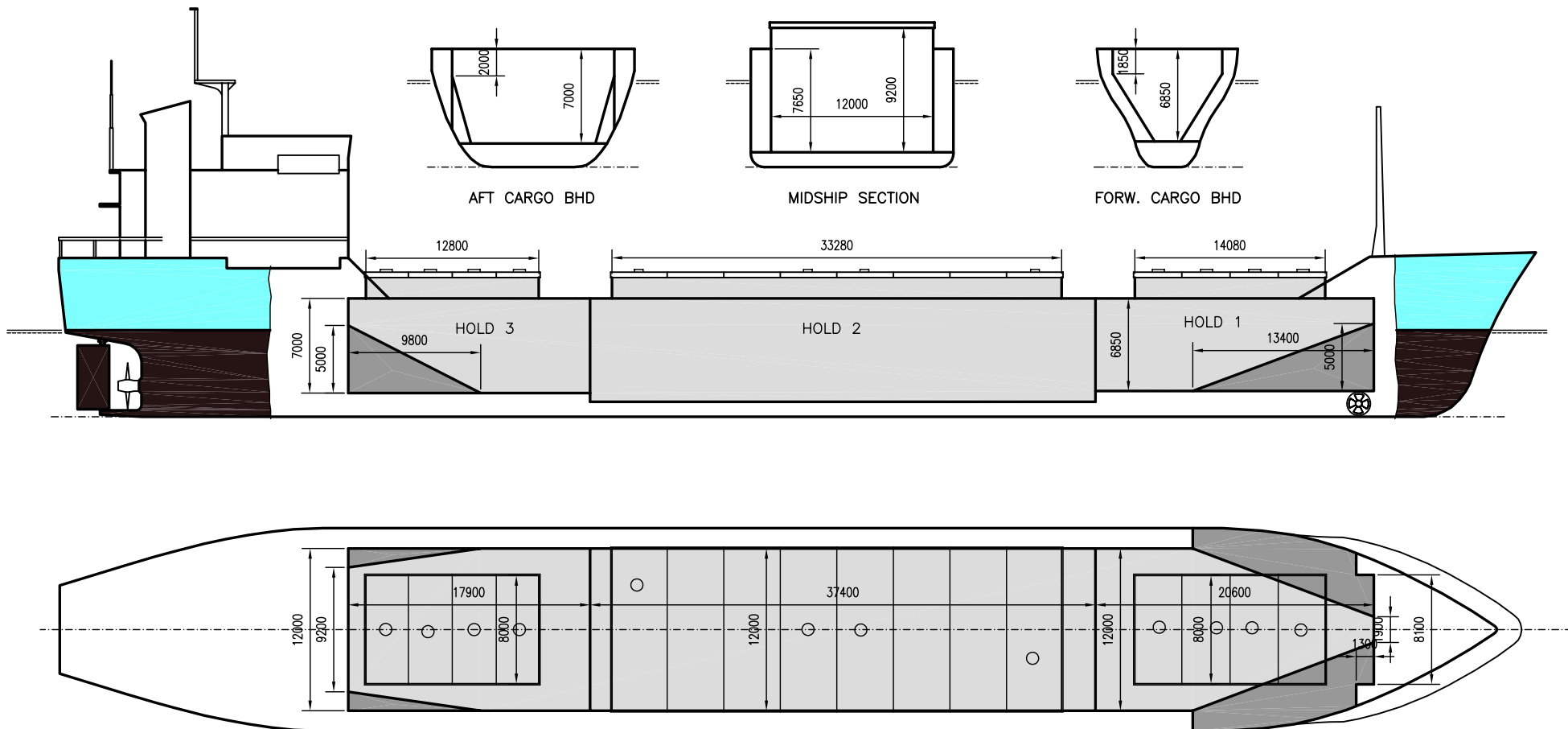


# WILSON MERSIN

DEADWEIGHT GROUP  
6000 dwt





# WILSON MERSIN

Ex. RAMNES  
 DWT GROUP 6000  
 IMO NO 7810222  
 CALL SIGN P3PA6  
 BUILD 1981  
 FLAG Cyprus

If not otherwise specified :  
 Dist/Dim in meters  
 Weights in m.tons

All details given in good faith without guarantee

**Builders** ..... Storvik Mek. Verksted AS  
**Classification** ..... BV / I + HULL + MACH aen carao - heavycarao AUT-UMS  
**Length oa** ..... 107.40  
**Breadth mld** ..... 15.00  
**Depth mld** ..... 8.75  
**Draft summer** ..... 6.72  
**Deadweight summer draft** ..... 6186  
**Draft winter** ..... 6.58  
**Deadweight winter draft** ..... 5995  
**Gross tonnage** ..... 3937  
**Net tonnage** ..... 2062  
**Immersion(load draft) TPC** ..... 13.73  
**Mean draft of ship in heavy ballast** ..... 4.35  
**Distance from forward end of No.1 Hatch to aft end of last hatch** ..... 71.00  
**Hatch type** ..... Kvaerner Multifold, Crocodile  
**Container (TEU) capacity Hold / Deck** ..... - / -

**Max permissible load on deck, mt/sqm** ..... 1.15  
**Max permissible load on tanktop, mt/sqm** ..... 9.50  
**Max air draft - 1** ..... 27.00  
**Max air draft - 2** ..... -  
**Distance from keel to top antenna -1** ..... 31.35  
**Distance from keel to top antenna -2** ..... -  
**Water ballast capacity** ..... 2 651.00  
**Fuel main engine - capa.(cbm)** ..... 350.00  
**Fuel aux engine - capa.(cbm)** ..... 80.00  
**Speed service, knots** ..... 12.50  
**Cargo gear** ..... No  
**Bow thruster** ..... No  
**Boxed** ..... No  
**Double skin** ..... Yes  
**Open hatch** ..... No  
**Rhine fitted** ..... No  
**Ammonium Nitrate fitted** ..... No  
**FeSi fitted** ..... Yes

### Hatch details:

- a : Distance from waterline fully ballasted to top of hatch coamings  
 b : Distance from waterline fully loaded to top of hatch coamings  
 c : Distance from tank top to top of hatch coamings  
 d : Max permissible loading on hatch covers  
 e : Distance from ship's rail to inside hatch coamings  
 f : Height of hatch coamings  
 g : Hatch opening  
 h : No. of Loadingholes on hatchcovers X diameter in mm

### Remarks :

FESI FITTED FOR CARGO HOLD 2 & 3 ONLY.

Htch#	Bale							Grain				Hold dimensions	Compartm :		Communication :		Equipment		
	a	b	c	d	e	f	g	h	Hold#	cbm	cbft		cbm	cbft	#	cbm		Type	No
1	7.00	3.75	9.35	1.75	3.30	1.70	14.08 x 8.00	4 x 610mm	1	1666	58 835	1724	60 883	19.20 x 12.00 x 7.60			Telex 1	421 007 010	Inmarsat
2	6.20	3.75	9.35	1.75	1.35	1.70	33.20 x 12.00	4 x 610mm	2	4272	150 865	4312	152 278	40.30 x 12.00 x 7.60			Telex 2		
3	5.40	3.75	9.35	1.75	3.30	1.70	12.80 x 8.00	4 x 610mm	3	1350	47 675	1387	48 982	16.60 x 12.00 x 7.60			Tlph 1	+47 922 03 192	Gsm
																	Tlph 2	+47 920 22 351	Gsm
																	Fax	+47 920 71 786	Gsm
																	Email	w-mersin@gtw.dialog.com	