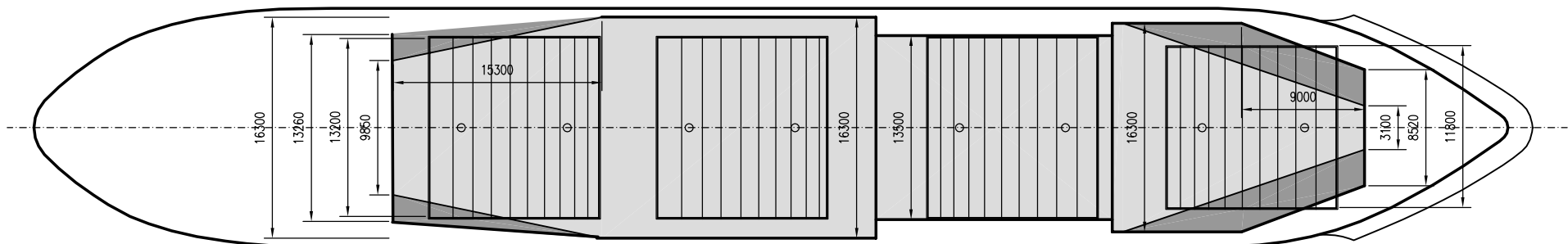
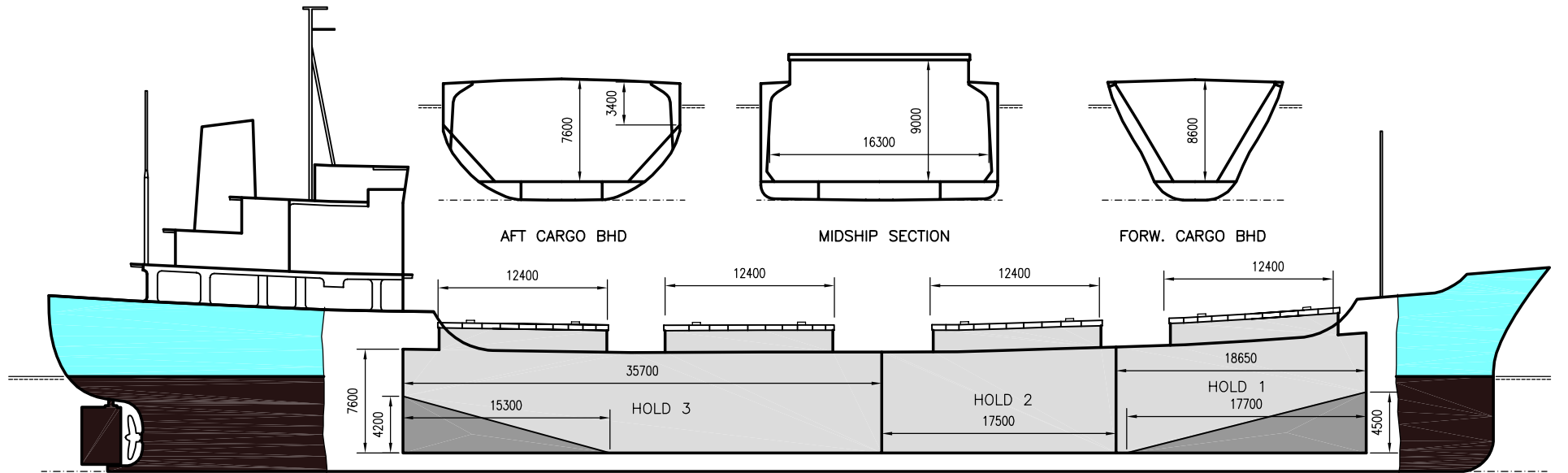


# WILSON TYNE

DEADWEIGHT GROUP  
6000 dwt





# WILSON TYNE

Ex. Hordnes  
 DWT GROUP 6000  
 IMO NO 7915307  
 CALL SIGN 9HWY5  
 BUILD 1980  
 FLAG Malta

If not otherwise specified :  
 Dist/Dim in meters  
 Weights in m.tons

All details given in good faith without guarantee

**Builders** ..... Miho Shipyard Co. Ltd., Shimizu, Japan  
**Classification** ..... BV / I\*HULL\*MACH\*AUT-UMS -gen.cargo ship -unres.nav. ICE IC  
**Length oa** ..... 110.52  
**Breadth mld** ..... 17.50  
**Depth mld** ..... 8.60  
**Draft summer** ..... 7.02  
**Deadweight summer draft** ..... 7106  
**Draft winter** ..... 6.87  
**Deadweight winter draft** ..... 6875  
**Gross tonnage** ..... 4913  
**Net tonnage** ..... 2531  
**Immersion(load draft) TPC** ..... 15.82  
**Mean draft of ship in heavy ballast** ..... 3.65  
**Distance from forward end of No.1 Hatch to aft end of last hatch** ..... 67.60  
**Hatch type** ..... Erman Rolltype  
**Container (TEU) capacity Hold / Deck** ..... - / -

**Max permissible load on deck, mt/sqm** ..... 3.30  
**Max permissible load on tanktop, mt/sqm** ..... 8.50  
**Max air draft - 1** ..... 32.00  
**Max air draft - 2** ..... -  
**Distance from keel to top antenna -1** ..... 36.12  
**Distance from keel to top antenna -2** ..... -  
**Water ballast capacity** ..... 1 707.00  
**Fuel main engine - capa.(cbm)** ..... 323.00  
**Fuel aux engine - capa.(cbm)** ..... 59.00  
**Speed service, knots** ..... 11.50  
**Cargo gear** ..... No  
**Bow thruster** ..... No  
**Boxed** ..... No  
**Double skin** ..... Yes  
**Open hatch** ..... No  
**Rhine fitted** ..... No  
**Ammonium Nitrate fitted** ..... No  
**FeSi fitted** ..... No

### Hatch details:

a : Distance from waterline fully ballasted to top of hatch coamings  
 b : Distance from waterline fully loaded to top of hatch coamings  
 c : Distance from tank top to top of hatch coamings  
 d : Max permissible loading on hatch covers  
 e : Distance from ship's rail to inside hatch coamings  
 f : Height of hatch coamings  
 g : Hatch opening  
 h : No. of Loadingholes on hatchcovers X diameter in mm

### Remarks :

3 holds / 4 hatches, hatches Nos.3+4 serving hold No.4.  
 Hold No.2 nearly boxed.  
 Due to vessel's sheering, heights from tanktop to top of hatch coaming given under "Hatch details", item "c", varies.  
 Actual heights are:  
 H/1: Fwd. 9.70m - Aft 9.54m  
 H/2: Fwd. 9.30m - Aft 9.20m  
 H/3: Fwd. 8.80m - Aft 8.80m  
 H/4: Fwd. 8.80m - Aft 9.20m

Htch#	Bale							Grain				Hold dimensions	Compartm : # cbm	Communication :		Equipment	
	a	b	c	d	e	f	g	h	Hold#	cbm	cbft			cbm	cbft		Type
1	9.20	5.00	9.70	1.75	2.80	1.70	12.40 x 11.80	2 x 600mm	1	2190	77 340	2272	80 236	18.65 x 16.30	Telex 1	424 824 510	Inmarsat
2	7.40	3.70	9.28	1.75	2.10	1.70	12.40 x 13.20	2 x 600mm	2	1992	70 347	2024	71 478	17.50 x 13.50	Telex 2	424 824 511	Inmarsat
3	6.40	3.20	8.80	1.75	2.10	1.70	12.40 x 13.20	2 x 600mm	3	4655	164 391	4822	170 289	35.70 x 16.30	Tlph 1	+47 922 66 039	Gsm
4	6.50	3.70	9.20	1.75	2.10	1.70	12.40 x 13.20	2 x 600mm							Tlph 2		
															Fax		
															Email	w-tyne@gtw.dualog.com	