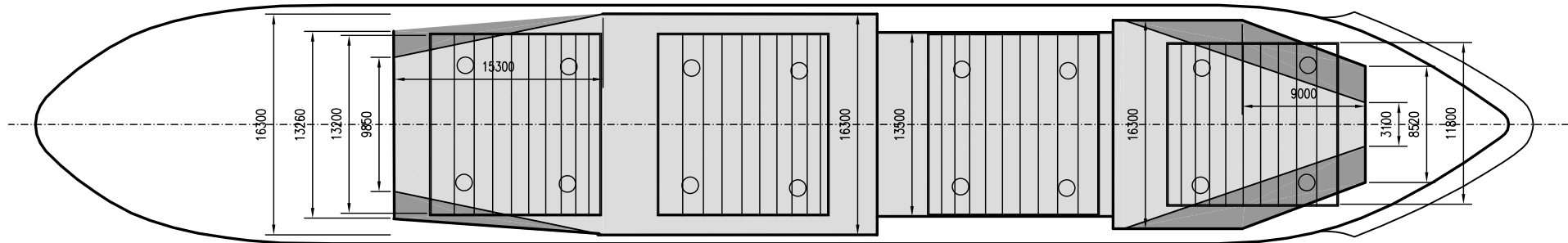
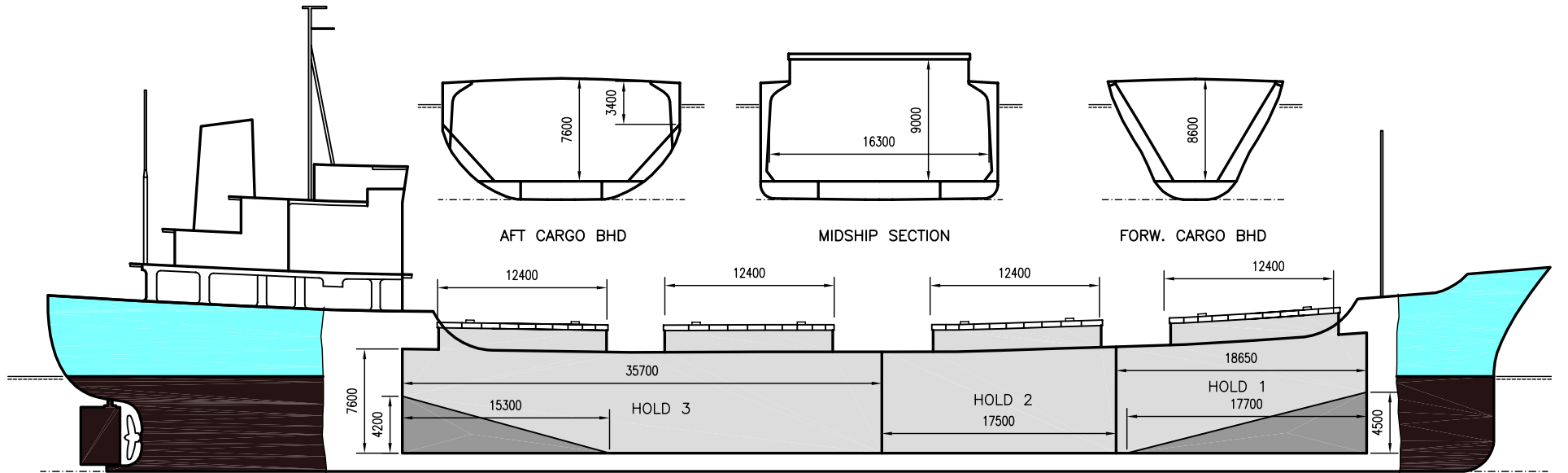


WILSON TRENT

DEADWEIGHT GROUP
6000 dwt





WILSON TRENT

Ex. Hernes
 DWT GROUP 6000
 IMO NO 7926095
 CALL SIGN P3LG5
 BUILD 1980
 FLAG Cyprus

If not otherwise specified :
 Dist/Dim in meters
 Weights in m.tons

All details given in good faith without guarantee

Builders Miko Zoshenko K.K Shimizu, Japan
Classification GL / +100 A5 E1 +MC E1 AUT
Length oa 110.52
Breadth mld 17.50
Depth mld 8.60
Draft summer 7.02
Deadweight summer draft 7106
Draft winter 6.87
Deadweight winter draft 6875
Gross tonnage 4924
Net tonnage 2578
Immersion(load draft) TPC 15.61
Mean draft of ship in heavy ballast 3.75
Distance from forward end of No.1 Hatch to aft end of last hatch 66.45
Hatch type Erman Rolltype
Container (TEU) capacity Hold / Deck - / -

Hatch details:

a : Distance from waterline fully ballasted to top of hatch coamings
 b : Distance from waterline fully loaded to top of hatch coamings
 c : Distance from tank top to top of hatch coamings
 d : Max permissible loading on hatch covers
 e : Distance from ship's rail to inside hatch coamings
 f : Height of hatch coamings
 g : Hatch opening
 h : No. of Loadingholes on hatchcovers X diameter in mm

Remarks :

3 holds / 4 hatches, hatches Nos.3+4 serving hold No.4.
 Hold No.2 nearly boxed.
 Due to vessel's sheering, heights from tanktop to top of hatch coaming given under "Hatch details", item "c", varies.
 Actual heights are:
 H/1: Fwd. 9.70m - Aft 9.50m
 H/2: Fwd. 9.30m - Aft 9.20m
 H/3: Fwd. 8.80m - Aft 8.80m
 H/4: Fwd. 8.80m - Aft 9.20m

Max permissible load on deck, mt/sqm 3.30
Max permissible load on tanktop, mt/sqm 8.50
Max air draft - 1 32.85
Max air draft - 2 -
Distance from keel to top antenna -1 36.60
Distance from keel to top antenna -2 -
Water ballast capacity 1 876.00
Fuel main engine - capa.(cbm) 620.54
Fuel aux engine - capa.(cbm) 70.32
Speed service, knots 11.50
Cargo gear No
Bow thruster No
Boxed No
Double skin Yes
Open hatch No
Rhine fitted No
Ammonium Nitrate fitted No
FeSi fitted No

Htch#	Bale							Grain				Hold dimensions	Compartm : # cbm	Communication :		Equipment	
	a	b	c	d	e	f	g	h	Hold#	cbm	cbft			cbm	cbft		Type
1	9.20	5.00	9.70	1.75	2.80	1.60	12.40 x 11.80	4 x 600mm	1	2190	77 340	2272	80 236	18.65 x 16.30	Telex 1	420 900 199	Inmarsat
2	7.40	3.70	9.28	1.75	2.10	1.60	12.40 x 13.20	4 x 600mm	2	1992	70 347	2024	71 478	17.50 x 13.50	Telex 2	420 900 485	Inmarsat
3	6.40	3.20	8.80	1.75	2.10	1.60	12.40 x 13.20	4 x 600mm	3	4655	164 391	4822	170 289	35.70 x 16.30	Tlph 1	+47 417 84 774	Gsm
4	6.50	3.70	9.20	1.75	2.10	1.60	12.40 x 13.20	4 x 600mm							Tlph 2	+47 976 75 406	
															Fax		
															Email	w-trent@gtw.dualog.com	