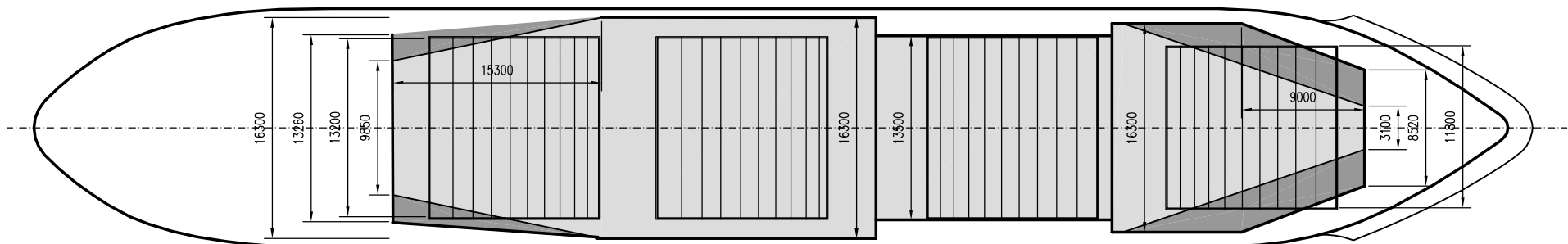
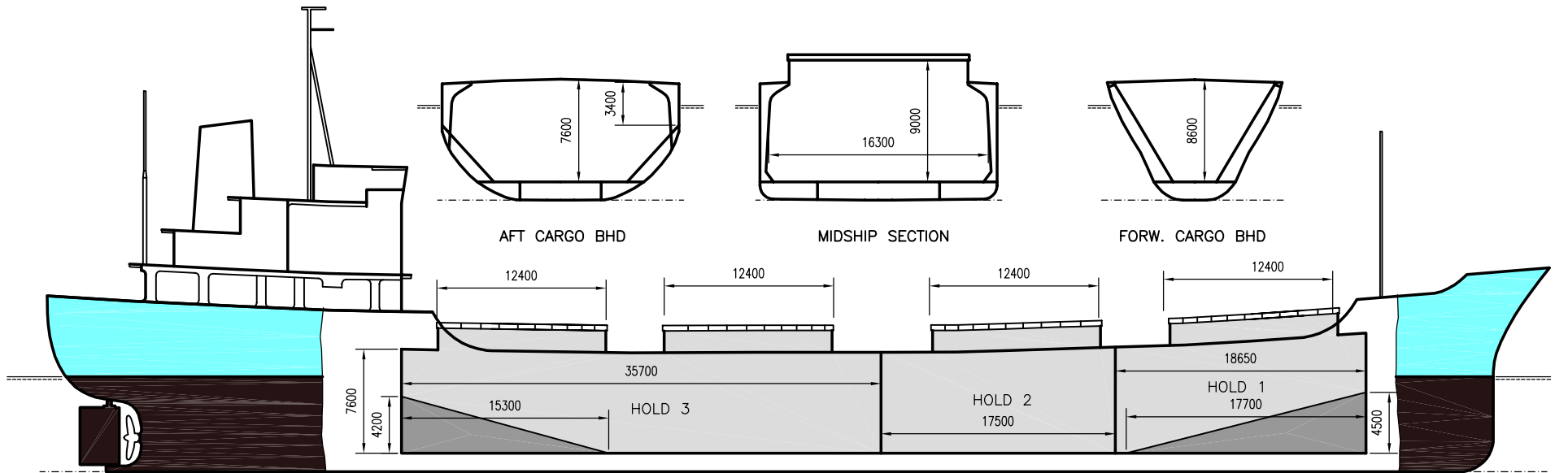


WILSON TANA

DEADWEIGHT GROUP
6000 dwt





WILSON TANA

Ex. Husnes
 DWT GROUP 6000
 IMO NO 7616224
 CALL SIGN 9HVN5
 BUILD 1977
 FLAG Malta

If not otherwise specified :
 Dist/Dim in meters
 Weights in m.tons

All details given in good faith without guarantee

Builders Hashihama Shipbuilding Co. Ltd., Imabari, Japan
Classification BV / I*HULL*MACH*AUT-UMS -gen.cargo ship -unres.nav. ICE IC
Length oa 110.52
Breadth mld 17.50
Depth mld 8.60
Draft summer 7.02
Deadweight summer draft 7174
Draft winter 6.87
Deadweight winter draft 6943
Gross tonnage 4907
Net tonnage 2764
Immersion(load draft) TPC 15.82
Mean draft of ship in heavy ballast 3.65
Distance from forward end of No.1 Hatch to aft end of last hatch 67.60
Hatch type Erman Rolltype
Container (TEU) capacity Hold / Deck - / -

Max permissible load on deck, mt/sqm 3.30
Max permissible load on tanktop, mt/sqm 8.50
Max air draft - 1 32.00
Max air draft - 2 -
Distance from keel to top antenna -1 36.00
Distance from keel to top antenna -2 -
Water ballast capacity 1 718.40
Fuel main engine - capa.(cbm) 323.00
Fuel aux engine - capa.(cbm) 59.00
Speed service, knots 11.50
Cargo gear No
Bow thruster No
Boxed No
Double skin No
Open hatch No
Rhine fitted No
Ammonium Nitrate fitted No
FeSi fitted No

Hatch details:

a : Distance from waterline fully ballasted to top of hatch coamings
 b : Distance from waterline fully loaded to top of hatch coamings
 c : Distance from tank top to top of hatch coamings
 d : Max permissible loading on hatch covers
 e : Distance from ship's rail to inside hatch coamings
 f : Height of hatch coamings
 g : Hatch opening
 h : No. of Loadingholes on hatchcovers X diameter in mm

Remarks :

3 holds / 4 hatches, hatches Nos.3+4 serving hold No.4.
 Hold No.2 nearly boxed.
 Due to vessel's sheering, heights from tanktop to top of hatch coaming given under "Hatch details", item "c", varies.
 Actual heights are:
 H/1: Fwd. 10.18m - Aft 9.30m
 H/2: Fwd. 9.30m - Aft 9.20m
 H/3: Fwd. 8.80m - Aft 8.80m
 H/4: Fwd. 8.80m - Aft 9.20m

Htch#								h	Hold#	Bale		Grain		Hold dimensions	Compartment :		Communication :		Equipment
	a	b	c	d	e	f	g			cbm	cbft	cbm	cbft		#	cbm	Type	No	
1	9.20	5.00	10.18	1.75	2.80	1.70	12.40 x 11.80	0	1	2276	80 378	2394	84 544	18.65 x 16.30			Telex 1	424 821 110	Inmarsat
2	7.40	3.70	9.28	1.75	2.10	1.70	12.40 x 13.20	0	2	1988	70 209	2020	71 336	17.50 x 13.50			Telex 2	424 821 111	Inmarsat
3	6.40	3.20	8.80	1.75	2.10	1.70	12.40 x 13.20	0	3	4787	169 069	5008	176 857	35.70 x 16.30			Tlph 1	+47 930 90 196	Gsm
4	6.50	3.70	9.20	1.75	2.10	1.70	12.40 x 13.20	0									Tlph 2		
																	Fax		
																	Email	w-tana@gtw.dualog.com	