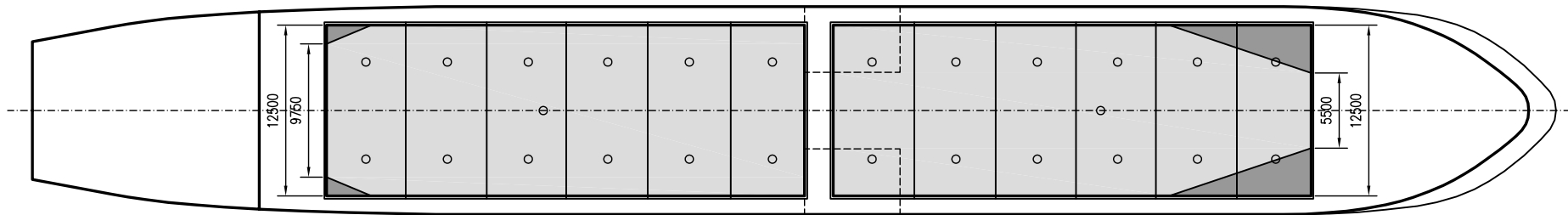
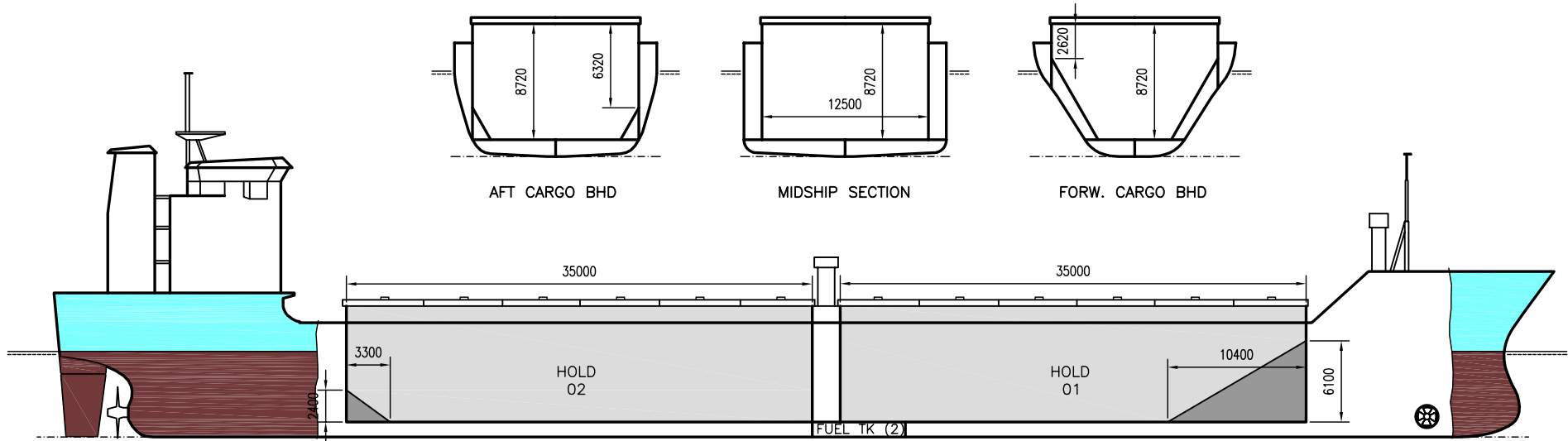


WILSON STADT

DEADWEIGHT GROUP
 6000 dwt





WILSON STADT

Ex. Linito
 DWT GROUP 6000
 IMO NO 8918485
 CALL SIGN 9HQW8
 BUILD 11/2000
 FLAG Malta

If not otherwise specified :
 Dist/Dim in meters
 Weights in m.tons

All details given in good faith without guarantee

| | | | |
|---|---|--|-------------------|
| Builders | Apatin Shipyard, Yugoslavia | Max permissible load on deck, mt/sqm | 1.75 |
| Classification | BV / I *HULL *MACH *AUT-UMS -aen.cargo -arabload -ICE -unres.na | Max permissible load on tanktop, mt/sqm | 13.00 |
| Length oa | 112.70 | Max air draft - 1 | 25.70 |
| Breadth mld | 15.20 | Max air draft - 2 | - |
| Depth mld | 8.60 | Distance from keel to top antenna -1 | 30.00 |
| Draft summer | 6.67 | Distance from keel to top antenna -2 | - |
| Deadweight summer draft | 6445 | Water ballast capacity | 2 858.00 |
| Draft winter | 6.51 | Fuel main engine - capa.(cbm) | 372.00 |
| Deadweight winter draft | 6239 | Fuel aux engine - capa.(cbm) | 58.00 |
| Gross tonnage | 4200 | Speed service, knots | 12.50 |
| Net tonnage | 2144 | Cargo gear | No |
| Immersion(load draft) TPC | 14.80 | Bow thruster | 800.hp/590 kw Yes |
| Mean draft of ship in heavy ballast | 4.30 | Boxed | No |
| Distance from forward end of No.1 Hatch to aft end of last hatch | 72.00 | Double skin | Yes |
| Hatch type | Kvaerner Multi Stacking, Vertical with hydraulic control | Open hatch | Yes |
| Container (TEU) capacity Hold / Deck | - / - | Rhine fitted | No |
| | | Ammonium Nitrate fitted | Yes |
| | | FeSi fitted | Yes |

Hatch details:

- a : Distance from waterline fully ballasted to top of hatch coamings
 b : Distance from waterline fully loaded to top of hatch coamings
 c : Distance from tank top to top of hatch coamings
 d : Max permissible loading on hatch covers
 e : Distance from ship's rail to inside hatch coamings
 f : Height of hatch coamings
 g : Hatch opening
 h : No. of Loadingholes on hatchcovers X diameter in mm

Remarks :

- Extreme breadth, incl fender list, 15.50m.
 Aux.engine consumption 1.0 mt/day in port only.

| Htch# | Bale | | | | | | | Grain | | | | Hold dimensions | Compartm : | | Communication : | | Equipment | | |
|-------|------|------|------|------|------|------|---------------|------------|-------|------|---------|-----------------|------------|----------------------|-----------------|-----|-----------|------------------------|----------|
| | a | b | c | d | e | f | g | h | Hold# | cbm | cbft | | cbm | cbft | # | cbm | | Type | No |
| 1 | 5.90 | 3.52 | 8.70 | 1.75 | 1.40 | 1.60 | 35.00 x 12.50 | 13 x 600mm | 1 | 3752 | 132 486 | 3752 | 132 486 | 35.00 x 12.50 x 8.70 | | | Telex 1 | 425651210 | Inmarsat |
| 2 | 5.90 | 3.52 | 8.70 | 1.75 | 1.40 | 1.60 | 35.00 x 12.50 | 13 x 600mm | 2 | 3824 | 135 037 | 3824 | 135 037 | 35.00 x 12.50 x 8.70 | | | Telex 2 | | |
| | | | | | | | | | | | | | | | | | Tlph 1 | +47 920 60 353 | Gsm |
| | | | | | | | | | | | | | | | | | Fax | | |
| | | | | | | | | | | | | | | | | | Email | w-stadt@gtw.dualog.com | |