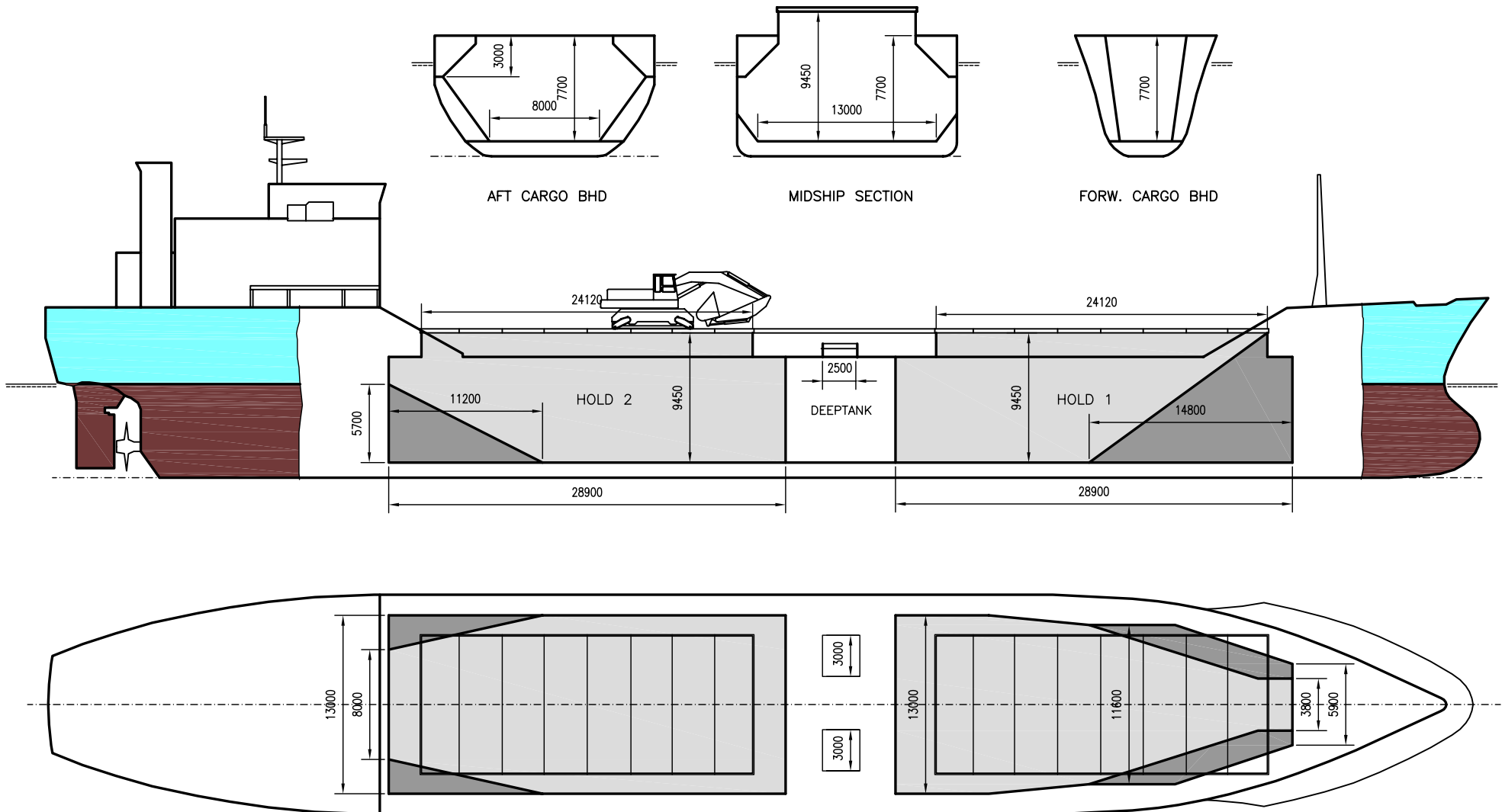


WILSON SPLIT

DEADWEIGHT GROUP
6000 dwt





WILSON SPLIT

Ex. Reksnes
 DWT GROUP 6000
 IMO NO 7411375
 CALL SIGN 8PVU
 BUILD 1977
 FLAG Barbados

If not otherwise specified :
 Dist/Dim in meters
 Weights in m.tons

All details given in good faith without guarantee

Builders Brødrene Lothe A/S, Haugesund
Classification BV // I*HULL*MACH Bulk carrier ESP -unres.nav. *AUT-UMS
Length oa 103.60
Breadth mld 16.00
Depth mld 8.82
Draft summer 6.96
Deadweight summer draft 5913
Draft winter 6.81
Deadweight winter draft 5715
Gross tonnage 3885
Net tonnage 2133
Immersion(load draft) TPC 13.25
Mean draft of ship in heavy ballast 4.71
Distance from forward end of No.1 Hatch to aft end of last hatch 61.00
Hatch type Kvaerner Transroto (Double Skin)
Container (TEU) capacity Hold / Deck - / -

Max permissible load on deck, mt/sqm 3.40
Max permissible load on tanktop, mt/sqm 8.30
Max air draft - 1 24.20
Max air draft - 2 -
Distance from keel to top antenna -1 28.60
Distance from keel to top antenna -2 -
Water ballast capacity 2 560.00
Fuel main engine - capa.(cbm) 420.00
Fuel aux engine - capa.(cbm) 58.00
Speed service, knots 12.50
Cargo gear TEREX O&K RH30F Yes
Bow thruster No
Boxed No
Double skin Yes
Open hatch No
Rhine fitted No
Ammonium Nitrate fitted No
FeSi fitted No

Hatch details:

- a : Distance from waterline fully ballasted to top of hatch coamings
 b : Distance from waterline fully loaded to top of hatch coamings
 c : Distance from tank top to top of hatch coamings
 d : Max permissible loading on hatch covers
 e : Distance from ship's rail to inside hatch coamings
 f : Height of hatch coamings
 g : Hatch opening
 h : No. of Loadingholes on hatchcovers X diameter in mm

Remarks :

If IFO80 capacity only 154.3 cbm

Htch#									h	Hold#	Bale		Grain		Hold dimensions	Compartm :		Communication :		Equipment
	a	b	c	d	e	f	g	cbm			cbft	cbm	cbft	#		cbm	Type	No		
1	6.07	3.60	9.43	2.50	2.80	1.75	24.10 x 10.00	0	1	3032	107 058	3032	107 058	30.20 x 15.60 x 7.13			Telex 1	435 566 110	Inmarsat	
2	6.07	3.60	9.43	2.50	2.80	1.75	24.10 x 10.00	0	2	3309	116 840	3309	116 840	30.20 x 15.60 x 7.13			Telex 2	435 566 120	Inmarsat	
																	Tlph 1	+47 920 22 235	Gsm	
																	Tlph 2			
																	Fax			
																	Email	w-split@gtw.dualog.com		