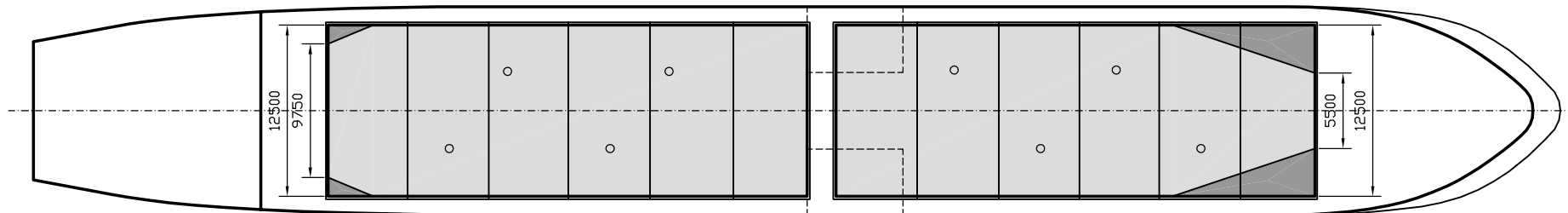
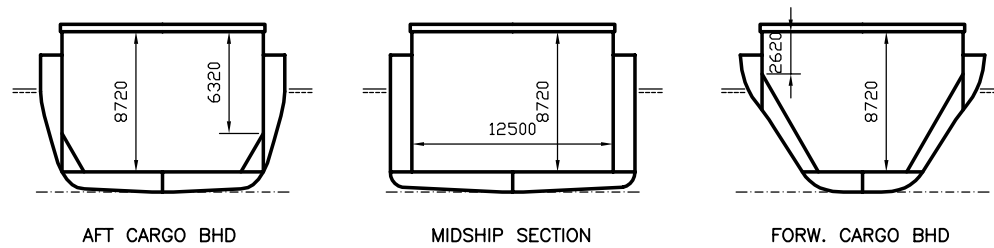
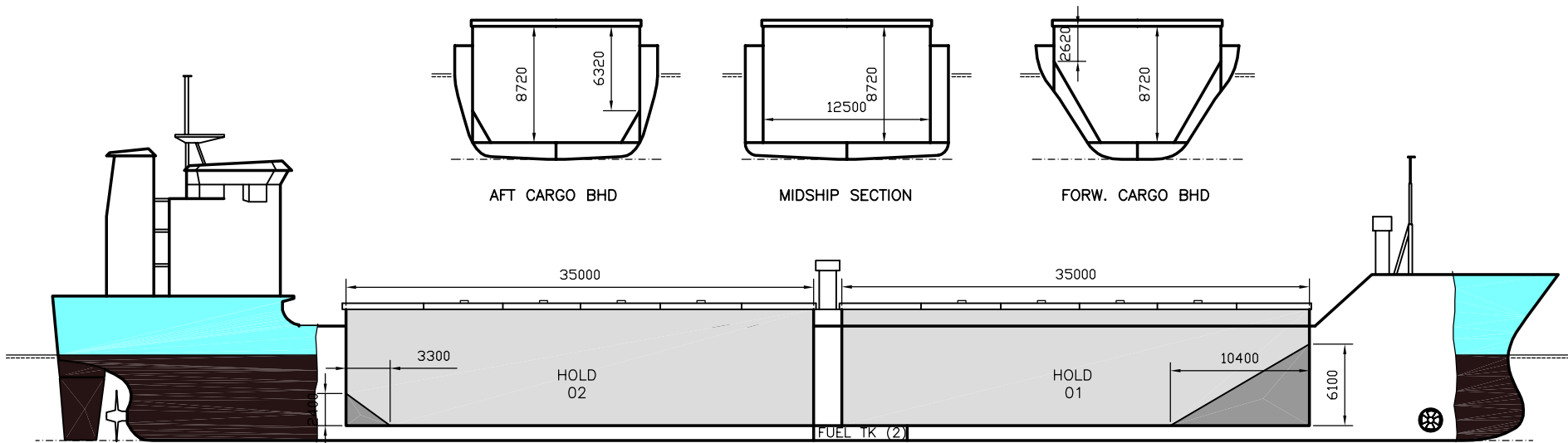


# WILSON SKAW

DEADWEIGHT GROUP  
6000 dwt





# WILSON SKAW

Ex. Elianna  
 DWT GROUP 6000  
 IMO NO 8918459  
 CALL SIGN C6SQ9  
 BUILD 07/1996  
 FLAG Bahamas

If not otherwise specified :  
 Dist/Dim in meters  
 Weights in m.tons

All details given in good faith without guarantee

<b>Builders</b> .....	Apatin Shipyard, Yugoslavia	<b>Max permissible load on deck, mt/sqm</b> .....	1.75
<b>Classification</b> .....	BV // I*HULL*MACH*AUT-UMS ICE heavycarao. arabload. unres.nav.	<b>Max permissible load on tanktop, mt/sqm</b> .....	13.00
<b>Length oa</b> .....	112.70	<b>Max air draft - 1</b> .....	25.70
<b>Breadth mld</b> .....	15.20	<b>Max air draft - 2</b> .....	-
<b>Depth mld</b> .....	8.60	<b>Distance from keel to top antenna -1</b> .....	30.00
<b>Draft summer</b> .....	6.68	<b>Distance from keel to top antenna -2</b> .....	-
<b>Deadweight summer draft</b> .....	6460	<b>Water ballast capacity</b> .....	2 858.00
<b>Draft winter</b> .....	6.54	<b>Fuel main engine - capa.(cbm)</b> .....	372.00
<b>Deadweight winter draft</b> .....	6260	<b>Fuel aux engine - capa.(cbm)</b> .....	58.00
<b>Gross tonnage</b> .....	4197	<b>Speed service, knots</b> .....	12.50
<b>Net tonnage</b> .....	2033	<b>Cargo gear</b> .....	No
<b>Immersion(load draft) TPC</b> .....	14.80	<b>Bow thruster</b> .....	800.HP / 590 KW Yes
<b>Mean draft of ship in heavy ballast</b> .....	4.30	<b>Boxed</b> .....	No
<b>Distance from forward end of No.1 Hatch to aft end of last hatch</b> .....	72.00	<b>Double skin</b> .....	Yes
<b>Hatch type</b> .....	Kvaerner Multi Stacking, Vertical with hydraulic control	<b>Open hatch</b> .....	Yes
<b>Container (TEU) capacity Hold / Deck</b> .....	- / -	<b>Rhine fitted</b> .....	No
		<b>Ammonium Nitrate fitted</b> .....	Yes
		<b>FeSi fitted</b> .....	Yes

**Hatch details:**

- a : Distance from waterline fully ballasted to top of hatch coamings
- b : Distance from waterline fully loaded to top of hatch coamings
- c : Distance from tank top to top of hatch coamings
- d : Max permissible loading on hatch covers
- e : Distance from ship's rail to inside hatch coamings
- f : Height of hatch coamings
- g : Hatch opening
- h : No. of Loadingholes on hatchcovers X diameter in mm

**Remarks :**

Extreme breadth, incl fender list, 15.50m.  
 Aux.engine consumption 1.0 mt/day in port only.  
 Indicated loading holes on forward and aft section of hatch covers are actually ventilation holes which can also be used as loading holes - dia. same as other loading holes.

Htch#									Hold#	Bale		Grain		Hold dimensions	Compartment :		Communication :		Equipment
	a	b	c	d	e	f	g	h		cbm	cbft	cbm	cbft		#	cbm	Type	No	
1	5.90	3.52	8.70	1.75	1.40	1.60	35.00 x 12.50	4 x 700mm	1	3751	132 467	3751	132 467	35.00 x 12.50 x 8.70			Telex 1	431 143 710	Inmarsat
2	5.90	3.52	8.70	1.75	1.40	1.60	35.00 x 12.50	4 x 700mm	2	3823	135 009	3823	135 009	35.00 x 12.50 x 8.70			Telex 2		
																	Tlph 1	+47 902 01 554	Gsm
																	Tlph 2		
																	Fax		
																	Email	w-skaw@gtw.dualog.com	