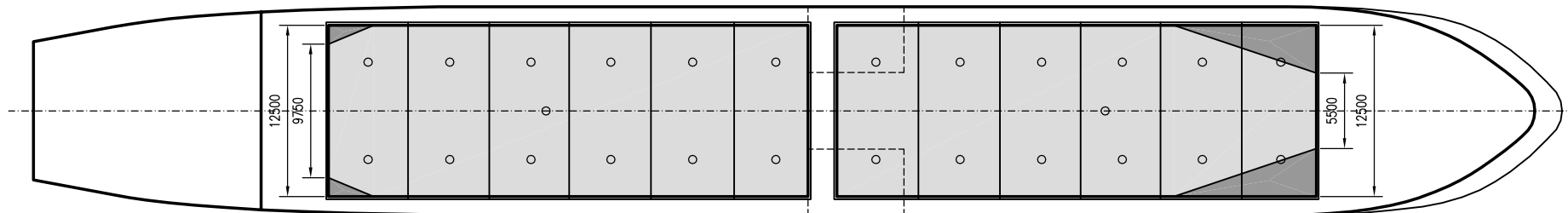
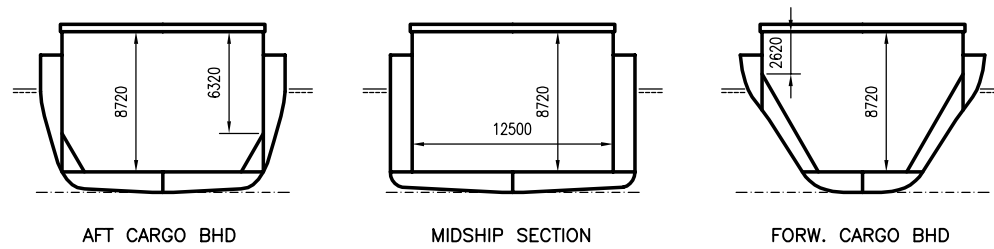
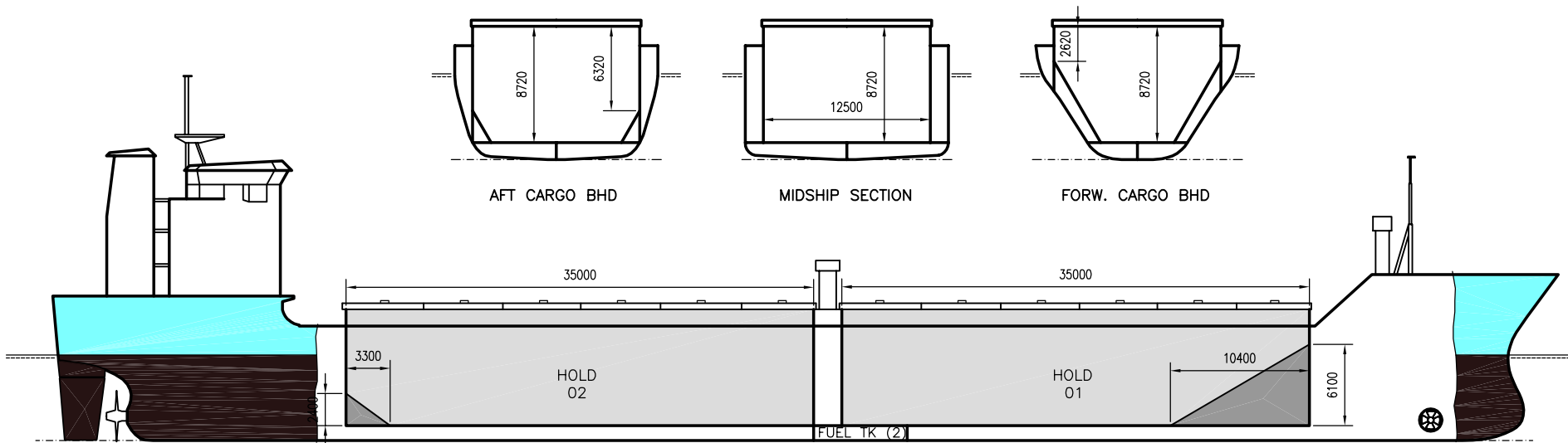


WILSON SAGA

DEADWEIGHT GROUP
6000 dwt





WILSON SAGA

Ex. Borealnes
 DWT GROUP 6000
 IMO NO 8918461
 CALL SIGN P3PD8
 BUILD 03/1998
 FLAG Cyprus

If not otherwise specified :
 Dist/Dim in meters
 Weights in m.tons

All details given in good faith without guarantee

Builders	Apatin Shipyard, Yugoslavia	Max permissible load on deck, mt/sqm	1.75
Classification	BV // I*HULL*MACH*AUT-UMS gen.cargo sip - heavycargo -unres.nav	Max permissible load on tanktop, mt/sqm	13.00
Length oa	112.95	Max air draft - 1	25.70
Breadth mld	15.20	Max air draft - 2	-
Depth mld	8.60	Distance from keel to top antenna -1	30.00
Draft summer	6.67	Distance from keel to top antenna -2	-
Deadweight summer draft	6490	Water ballast capacity	2 858.00
Draft winter	6.53	Fuel main engine - capa.(cbm)	372.00
Deadweight winter draft	6284	Fuel aux engine - capa.(cbm)	58.00
Gross tonnage	4200	Speed service, knots	12.50
Net tonnage	2144	Cargo gear	No
Immersion(load draft) TPC	14.80	Bow thruster	800.HP / 590 KW Yes
Mean draft of ship in heavy ballast	4.30	Boxed	No
Distance from forward end of No.1 Hatch to aft end of last hatch	72.00	Double skin	Yes
Hatch type	Kvaerner Multi Stacking, Vertical with hydraulic control	Open hatch	Yes
Container (TEU) capacity Hold / Deck	- / -	Rhine fitted	No
		Ammonium Nitrate fitted	Yes
		FeSi fitted	Yes

Hatch details:

- a : Distance from waterline fully ballasted to top of hatch coamings
 b : Distance from waterline fully loaded to top of hatch coamings
 c : Distance from tank top to top of hatch coamings
 d : Max permissible loading on hatch covers
 e : Distance from ship's rail to inside hatch coamings
 f : Height of hatch coamings
 g : Hatch opening
 h : No. of Loadingholes on hatchcovers X diameter in mm

Remarks :

- Extreme breadth, incl fender list, 15.50m.
 Aux.engine consumption 1.0 mt/day in port only.

Htch#	Bale							Grain				Hold dimensions	Compartm :		Communication :		Equipment		
	a	b	c	d	e	f	g	h	Hold#	cbm	cbft		cbm	cbft	#	cbm		Type	No
1	5.90	3.52	8.70	1.75	1.40	1.60	35.00 x 12.50	13 x 600mm	1	3751	132 465	3751	132 465	35.00 x 12.50 x 8.70			Telex 1	421 289 310	Inmarsat
2	5.90	3.52	8.70	1.75	1.40	1.60	35.00 x 12.50	13 x 600mm	2	3823	135 009	3823	135 009	35.00 x 12.50 x 8.70			Telex 2		
																	Tlph 1	+47 922 34 556	Gsm
																	Fax		
																	Email	w-saga@gtw.dualog.com	