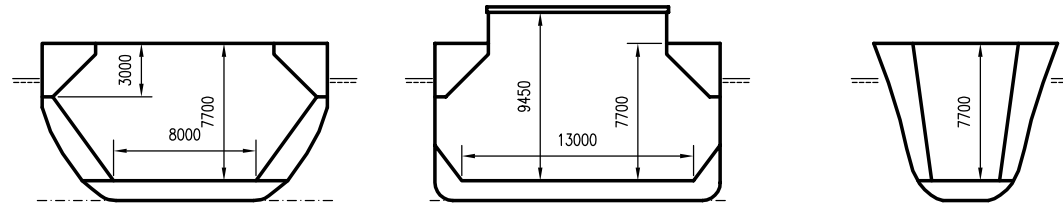


# WILSON ROSS

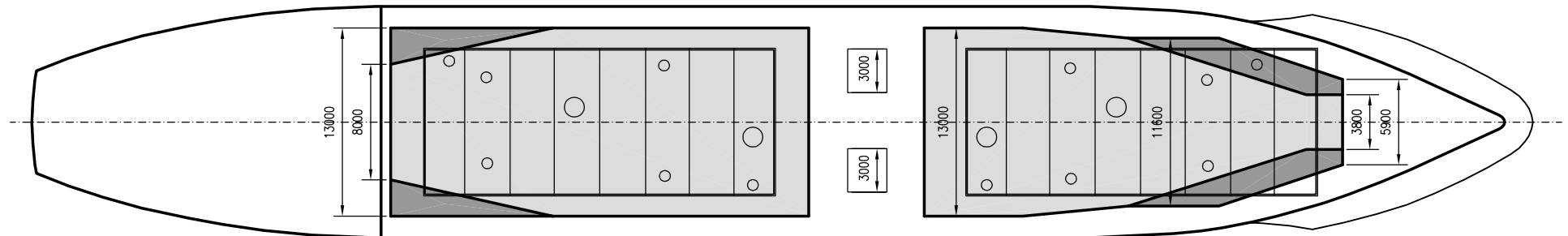
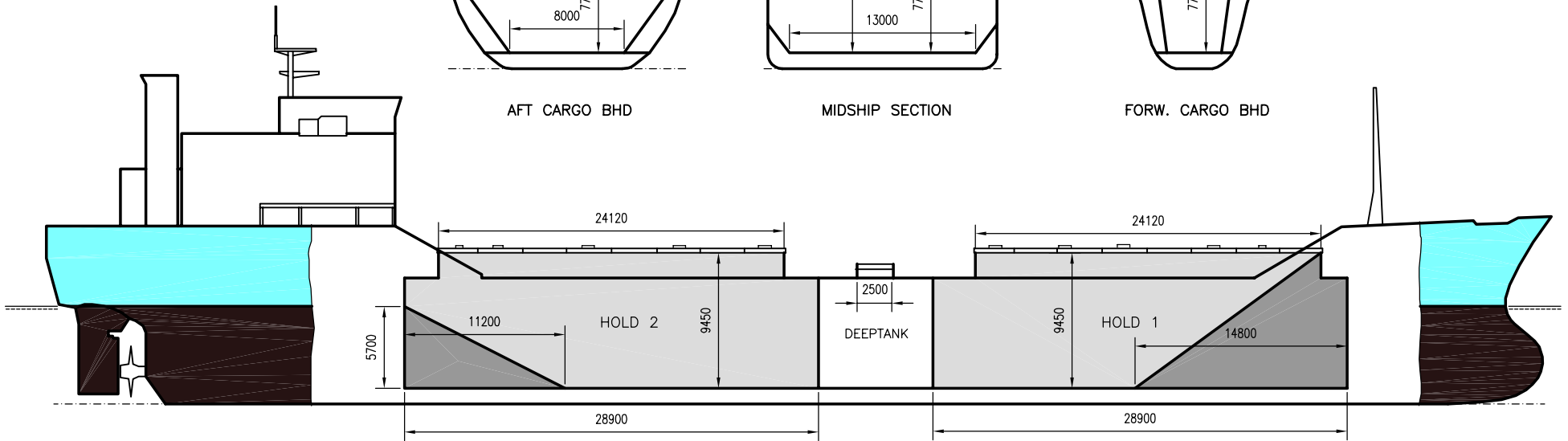
DEADWEIGHT GROUP  
6000 dwt



AFT CARGO BHD

MIDSHIP SECTION

FORW. CARGO BHD





# WILSON ROSS

Ex. Rossnes  
 DWT GROUP 6000  
 IMO NO 7382495  
 CALL SIGN 9HCC6  
 BUILD 1975  
 FLAG Malta

If not otherwise specified :  
 Dist/Dim in meters  
 Weights in m.tons

All details given in good faith without guarantee

**Builders** ..... Georg Eides Sønner A/S, Høylandsbygd  
**Classification** ..... BV / I + HULL + MACH Bulk carrier ESP + AUT-UMS  
**Length oa** ..... 103.60  
**Breadth mld** ..... 16.00  
**Depth mld** ..... 8.82  
**Draft summer** ..... 6.96  
**Deadweight summer draft** ..... 6135  
**Draft winter** ..... 6.81  
**Deadweight winter draft** ..... 5936  
**Gross tonnage** ..... 3883  
**Net tonnage** ..... 2133  
**Immersion(load draft) TPC** ..... 13.25  
**Mean draft of ship in heavy ballast** ..... 4.35  
**Distance from forward end of No.1 Hatch to aft end of last hatch** ..... 61.00  
**Hatch type** ..... Kvaerner Transroto (Double Skin)  
**Container (TEU) capacity Hold / Deck** ..... - / -

### Hatch details:

- a : Distance from waterline fully ballasted to top of hatch coamings  
 b : Distance from waterline fully loaded to top of hatch coamings  
 c : Distance from tank top to top of hatch coamings  
 d : Max permissible loading on hatch covers  
 e : Distance from ship's rail to inside hatch coamings  
 f : Height of hatch coamings  
 g : Hatch opening  
 h : No. of Loadingholes on hatchcovers X diameter in mm

### Remarks :

- If IFO80 capacity only 154.3 cbm.  
 Loading holes on hatch covers:  
 Hatch No.1 - 6 x 600mm + 1 x 900mm + 1 x 1000mm  
 Hatch No.2 - 6 x 600mm + 1 x 900mm + 1 x 1000mm

**Max permissible load on deck, mt/sqm** ..... 3.40  
**Max permissible load on tanktop, mt/sqm** ..... 8.30  
**Max air draft - 1** ..... 24.50  
**Max air draft - 2** ..... -  
**Distance from keel to top antenna -1** ..... 28.60  
**Distance from keel to top antenna -2** ..... -  
**Water ballast capacity** ..... 2 650.00  
**Fuel main engine - capa.(cbm)** ..... 420.00  
**Fuel aux engine - capa.(cbm)** ..... 58.00  
**Speed service, knots** ..... 12.50  
**Cargo gear** ..... No  
**Bow thruster** ..... No  
**Boxed** ..... No  
**Double skin** ..... Yes  
**Open hatch** ..... No  
**Rhine fitted** ..... No  
**Ammonium Nitrate fitted** ..... No  
**FeSi fitted** ..... No

Htch#	Bale							Grain				Hold dimensions	Compartm :		Communication :		Equipment		
	a	b	c	d	e	f	g	h	Hold#	cbm	cbft		cbm	cbft	#	cbm		Type	No
1	6.30	3.60	9.43	2.50	2.80	1.75	24.12 x 10.00	8	1	3212	113 420	3280	115 820	30.20 x 15.60 x 7.13			Telex 1	424 837 910	Inmarsat
2	6.30	3.60	9.43	2.50	2.80	1.75	24.12 x 10.00	8	2	3620	127 820	3685	130 120	30.20 x 15.60 x 7.13			Telex 2		
																	Tlph 1	+47 920 33 298	Gsm
																	Tlph 2	+47 920 22 368	Gsm
																	Fax	+47 920 71 793	Gsm
																	Email	w-ross@gtw.dualog.com	