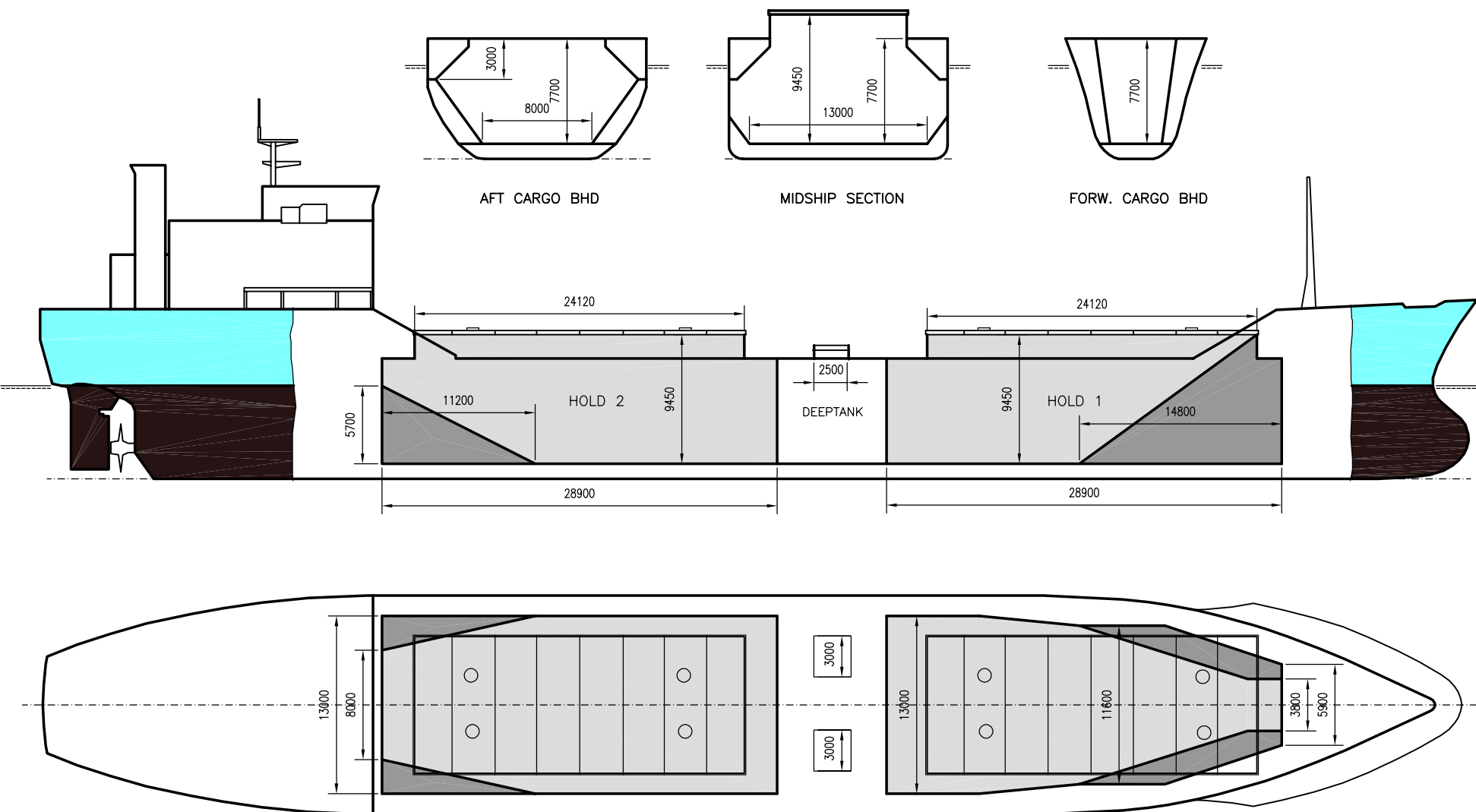


# WILSON RIGA

DEADWEIGHT GROUP  
6000 dwt





# WILSON RIGA

Ex. Risnes  
 DWT GROUP 6000  
 IMO NO 7382500  
 CALL SIGN 8PQT  
 BUILD 1976  
 FLAG Barbados

If not otherwise specified :  
 Dist/Dim in meters  
 Weights in m.tons

All details given in good faith without guarantee

**Builders** ..... Georg Eides Sønner AS, Høylandsbygd  
**Classification** ..... BV // I\*HULL\*MACH -Bulk carrier ESP -unres.naviagation \* AUT-UMS  
**Length oa** ..... 103.60  
**Breadth mld** ..... 16.00  
**Depth mld** ..... 8.82  
**Draft summer** ..... 6.96  
**Deadweight summer draft** ..... 6085  
**Draft winter** ..... 6.81  
**Deadweight winter draft** ..... 5885  
**Gross tonnage** ..... 3890  
**Net tonnage** ..... 2048  
**Immersion(load draft) TPC** ..... 13.25  
**Mean draft of ship in heavy ballast** ..... 4.35  
**Distance from forward end of No.1 Hatch to aft end of last hatch** ..... 61.00  
**Hatch type** ..... Kvaerner Trans Roto /Electric  
**Container (TEU) capacity Hold / Deck** ..... - / -

**Max permissible load on deck, mt/sqm** ..... 3.47  
**Max permissible load on tanktop, mt/sqm** ..... 10.75  
**Max air draft - 1** ..... 24.00  
**Max air draft - 2** ..... -  
**Distance from keel to top antenna -1** ..... 28.60  
**Distance from keel to top antenna -2** ..... -  
**Water ballast capacity** ..... 2 586.00  
**Fuel main engine - capa.(cbm)** ..... 420.20  
**Fuel aux engine - capa.(cbm)** ..... 63.00  
**Speed service, knots** ..... 12.00  
**Cargo gear** ..... No  
**Bow thruster** ..... No  
**Boxed** ..... No  
**Double skin** ..... Yes  
**Open hatch** ..... No  
**Rhine fitted** ..... No  
**Ammonium Nitrate fitted** ..... Yes  
**FeSi fitted** ..... Yes

## Hatch details:

- a : Distance from waterline fully ballasted to top of hatch coamings  
 b : Distance from waterline fully loaded to top of hatch coamings  
 c : Distance from tank top to top of hatch coamings  
 d : Max permissible loading on hatch covers  
 e : Distance from ship's rail to inside hatch coamings  
 f : Height of hatch coamings  
 g : Hatch opening  
 h : No. of Loadingholes on hatchcovers X diameter in mm

## Remarks :

Ammonium nitrate fitted in cargo hold 1 only.

Htch#	Bale							Grain				Hold dimensions	Compartm :		Communication :		Equipment		
	a	b	c	d	e	f	g	h	Hold#	cbm	cbft		cbm	cbft	#	cbm		Type	No
1	6.50	3.80	9.43	2.50	3.00	1.75	24.10 x 10.00	4 x 850mm	1	3032	107 058	3032	107 058	30.20 x 15.60 x 7.13			Telex 1	431 115 510	Inmarsat
2	6.10	3.65	9.43	2.50	3.00	1.75	24.10 x 10.00	4 x 850mm	2	3309	116 840	3309	116 840	30.20 x 15.60 x 7.13			Telex 2	431 115 520	Inmarsat
																	Tlph 1	+47 932 55 332	Gsm
																	Tlph 2		
																	Fax		
																	Email	w-riga@gtw.dialog.com	