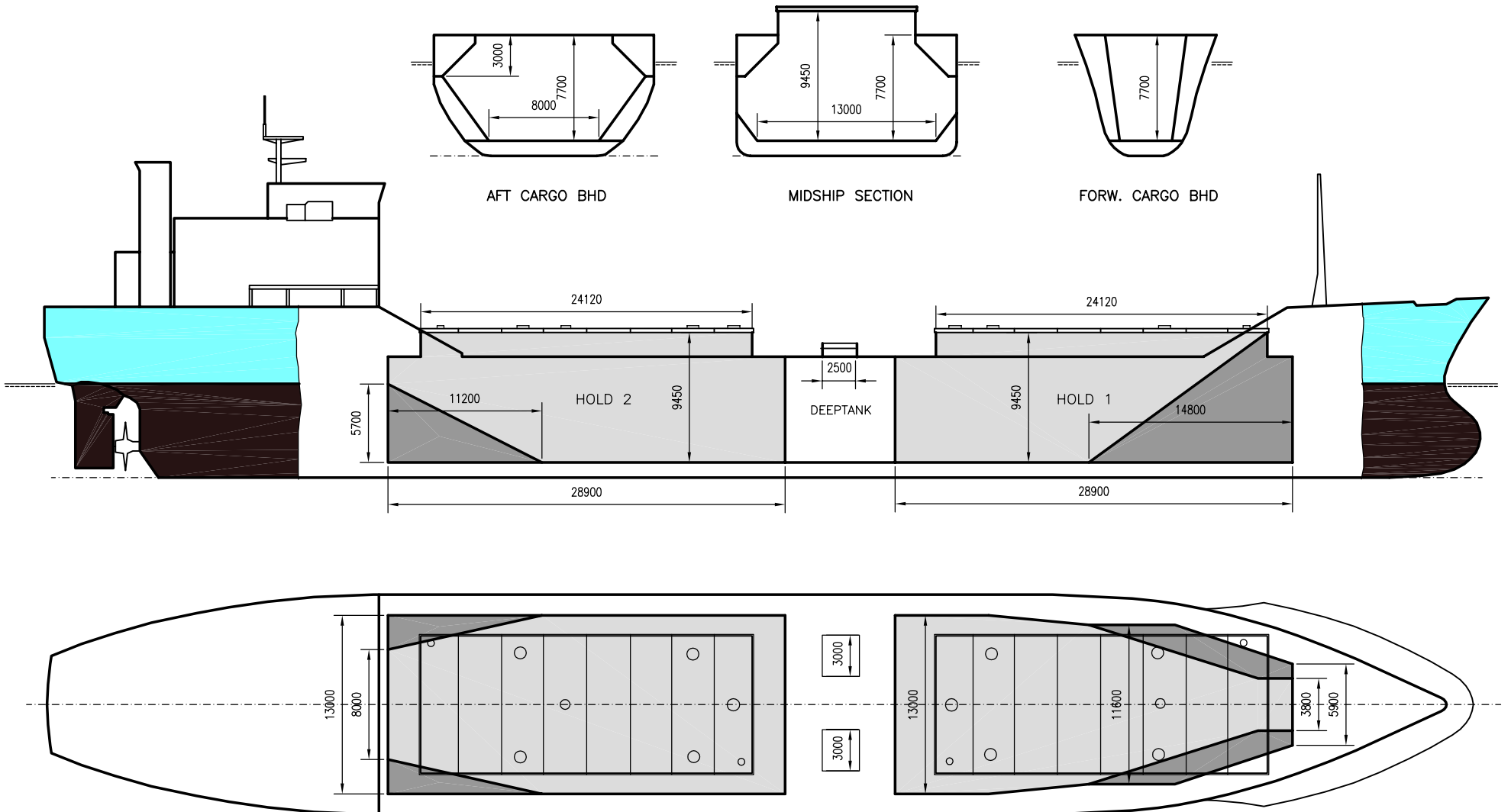


WILSON REEF

DEADWEIGHT GROUP
6000 dwt





WILSON REEF

Ex.	Refsnes
DWT GROUP	6000
IMO NO	7382665
CALL SIGN	9HUY5
BUILD	1975
FLAG	Malta

If not otherwise specified :
Dist/Dim in meters
Weights in m.tons

All details given in good faith without guarantee

Builders	Kleven Mek Verksted A/S
Classification	BV / 1 3/3 E Bulk Carrier ESP Deep Sea STB-GRN
Length oa	103.60
Breadth mld	16.00
Depth mld	8.82
Draft summer	6.96
Deadweight summer draft	6135
Draft winter	6.81
Deadweight winter draft	5936
Gross tonnage	3883
Net tonnage	2133
Immersion(load draft) TPC	13.25
Mean draft of ship in heavy ballast	4.35
Distance from forward end of No.1 Hatch to aft end of last hatch	61.00
Hatch type	Kvaerner Transroto (Double Skin)
Container (TEU) capacity Hold / Deck	- / -

Hatch details:

- a : Distance from waterline fully ballasted to top of hatch coamings
b : Distance from waterline fully loaded to top of hatch coamings
c : Distance from tank top to top of hatch coamings
d : Max permissible loading on hatch covers
e : Distance from ship's rail to inside hatch coamings
f : Height of hatch coamings
g : Hatch opening
h : No. of Loadingholes on hatchcovers X diameter in mm

Remarks :

- If IFO80 capacity only 154.3 cbm.
Loading holes on hatch covers:
Hatch No.1 - 2 x 500mm + 1 x 710mm + 4 x 870mm + 1 x 900mm
Hatch No.2 - 2 x 500mm + 1 x 720mm + 4 x 870mm + 1 x 900mm

Max permissible load on deck, mt/sqm	3.40
Max permissible load on tanktop, mt/sqm	8.30
Max air draft - 1	24.50
Max air draft - 2	-
Distance from keel to top antenna -1	28.60
Distance from keel to top antenna -2	-
Water ballast capacity	2 650.00
Fuel main engine - capa.(cbm)	420.00
Fuel aux engine - capa.(cbm)	58.00
Speed service, knots	12.00
Cargo gear	No
Bow thruster	No
Boxed	No
Double skin	Yes
Open hatch	No
Rhine fitted	No
Ammonium Nitrate fitted	No
FeSi fitted	No

Htch#	Bale							h	Hold#	Grain				Hold dimensions	Compartm :		Communication :		Equipment
	a	b	c	d	e	f	g			cbm	cbft	cbm	cbft		#	cbm	Type	No	
1	6.30	3.60	9.43	2.50	2.80	1.75	24.10 x 10.00	8	1	3212	113 420	3212	113 432	30.20 x 15.60 x 7.13			Telex 1	424 820 010	Inmarsat
2	6.30	3.60	9.43	2.50	2.80	1.75	24.10 x 10.00	8	2	3620	127 820	3620	127 840	30.20 x 15.60 x 7.13			Telex 2		
																	Tlph 1	+47 920 33 285	Gsm
																	Tlph 2	+47 930 31 611	Gsm
																	Fax	+47 930 71 514	Gsm
																	Email	w-reef@gtw.dualog.com	