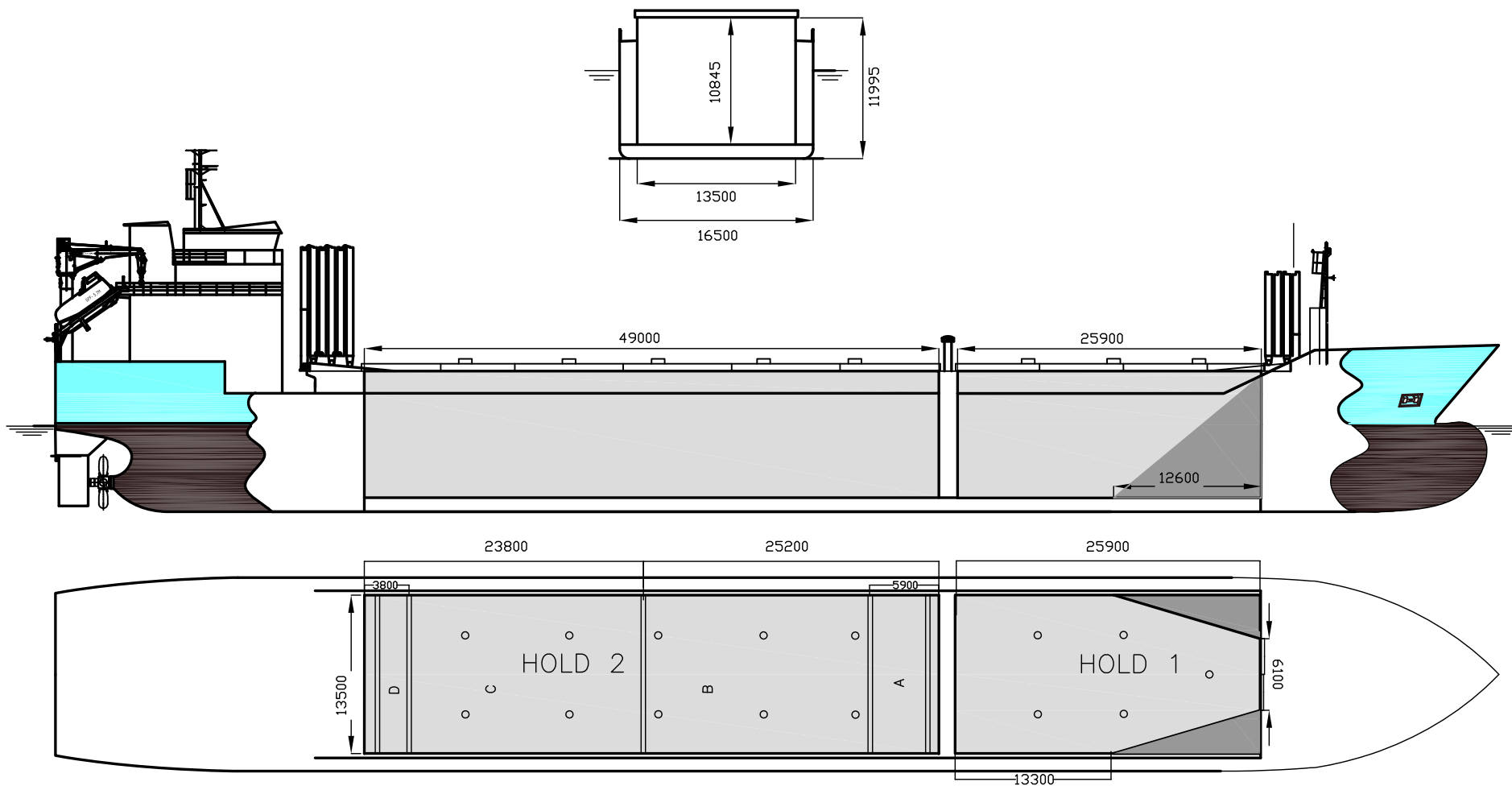


WILSON NORTH

DEADWEIGHT GROUP

8300 dwt





WILSON NORTH

If not otherwise specified :

Dist/Dim in meters

Weights in m.tons

All details given in good faith without guarantee

DWT GROUP 8000
 IMO NO 9430947
 CALL SIGN 9HA2312
 BUILD 05/2010
 FLAG Malta

Builders CSC Yichang Shipyard, Yichang, China
Classification GL / 100 A5 E1 G BMW SOLAS-II-2 Req.19DBC +MC E1 AUT
Length oa 123.10
Breadth mld 16.50
Depth mld 10.00
Draft summer 7.40
Deadweight summer draft 8308
Draft winter 7.24
Deadweight winter draft 8083
Gross tonnage 6118
Net tonnage 2966
Immersion(load draft) TPC 17.65
Mean draft of ship in heavy ballast 4.09
Distance from forward end of No.1 Hatch to aft end of last hatch 75.94
Hatch type Mac Gregor Folding type
Container (TEU) capacity Hold / Deck - / -

Max permissible load on deck, mt/sqm 3.50
Max permissible load on tanktop, mt/sqm 15.00
Max air draft - 1 28.23
Max air draft - 2 -
Distance from keel to top antenna -1 32.32
Distance from keel to top antenna -2 -
Water ballast capacity 2 880.00
Fuel main engine - capa.(cbm) 409.80
Fuel aux engine - capa.(cbm) 65.20
Speed service, knots 13.00
Cargo gear No
Bow thruster 400.kW . Yes
Boxed Yes
Double skin Yes
Open hatch Yes
Rhine fitted No
Ammonium Nitrate fitted Yes
FeSi fitted Yes

Hatch details:

- a : Distance from waterline fully ballasted to top of hatch coamings
 b : Distance from waterline fully loaded to top of hatch coamings
 c : Distance from tank top to top of hatch coamings
 d : Max permissible loading on hatch covers
 e : Distance from ship's rail to inside hatch coamings
 f : Height of hatch coamings
 g : Hatch opening
 h : No. of Loadingholes on hatchcovers X diameter in mm

Remarks :

- Hold 1 with sloping plates 12.6m forward (see drawing).
 Hold 2 boxed, one movable bulkhead in hold no. 2, three different positions + two parking positions. Bulkhead dim about 0.4m x 13.5m x 10.8m .
 Bale/grain capacity at 7050 cbm for hold 2 is with bulkhead in fwd parking position. Cubic capacity with bulkhead in aft parking position is 7064 cbm.
 Cubic capacity hold 2 without bulkhead is 7174 cbm.
 Cubic capacity hold 2 with bulkhead in pos. 1, 2 and 3 is 7101 cbm.
 Vessel can load steel coils 45 tons length at least 2 floors.

Htch#	Bale							Grain				Hold dimensions	Compartm : # cbm	Communication :		Equipment			
	a	b	c	d	e	f	g	h	Hold#	cbm	cbft			cbm	cbft		Type	No	
1	8.50	4.60	10.55	3.50	1.50	2.00	25.90 x 13.50	5 x 700 mm	1	3681	130 002	3681	130 002	25.90 x 13.50 x 10.845			Telex 1	4248311310	Inmarsat
2	7.50	4.60	10.55	3.50	1.50	2.00	49.70 x 13.50	10 x 700 mm	2	7050	248 960	7050	248 960	49.00 x 13.50 x 10.845			Telex 2	4248311311	Inmarsat
																	Tlph 1	+47 476 13 301	Gsm
																	Tlph 2		
																	Fax		
																	Email	w-north@gtw.dualog.com	