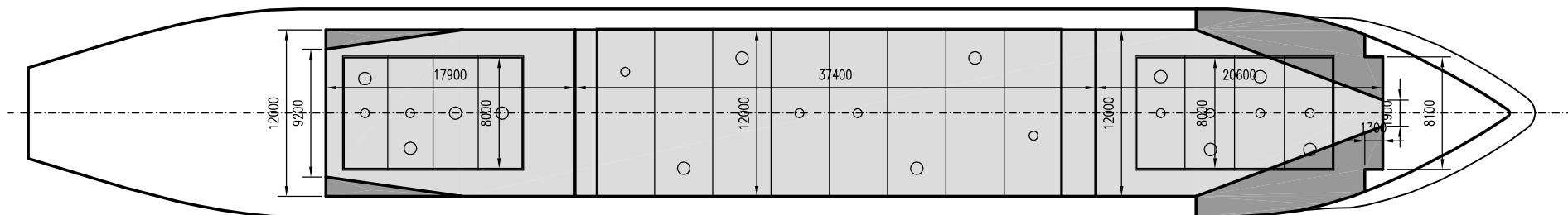
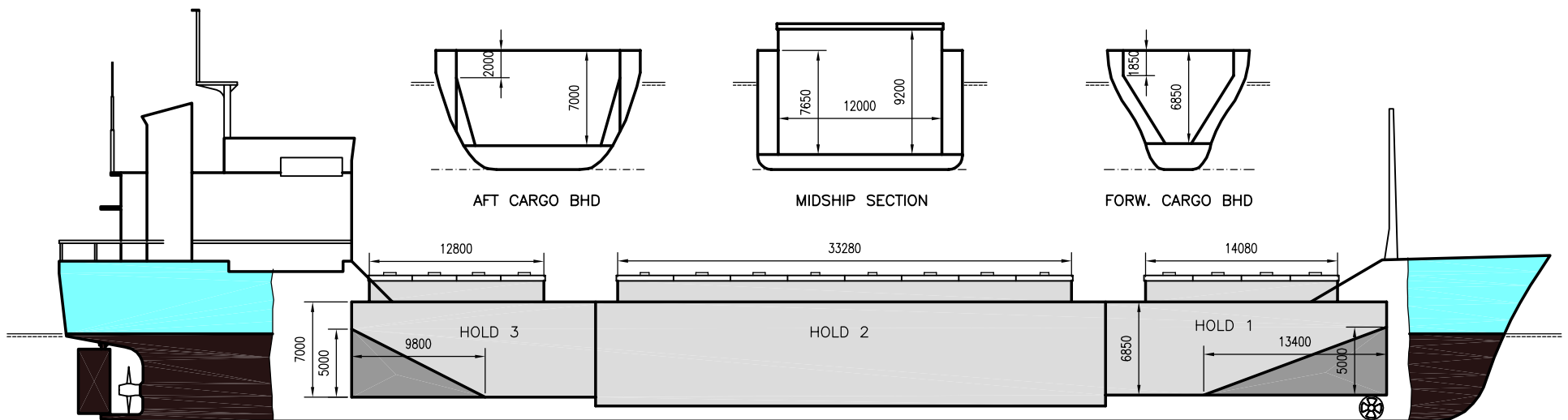


WILSON MALM

DEADWEIGHT GROUP
6000 dwt





WILSON MALM

Ex. **Garnes**
 DWT GROUP **6000**
 IMO NO **7810210**
 CALL SIGN **9HUH7**
 BUILD **1980**
 FLAG **Malta**

If not otherwise specified :
 Dist/Dim in meters
 Weights in m.tons

All details given in good faith without guarantee

Builders	Storvik Mek. Verksted AS	Max permissible load on deck, mt/sqm	1.15
Classification	BV / I +HULL +MACH +AUT-UMS, gen.cargo, heavv cargo, unre.nav.	Max permissible load on tanktop, mt/sqm	9.50
Length oa	107.36	Max air draft - 1	27.00
Breadth mld	15.00	Max air draft - 2	-
Depth mld	8.75	Distance from keel to top antenna -1	31.35
Draft summer	6.75	Distance from keel to top antenna -2	-
Deadweight summer draft	6176	Water ballast capacity	2 035.54
Draft winter	6.60	Fuel main engine - capa.(cbm)	461.14
Deadweight winter draft	5985	Fuel aux engine - capa.(cbm)	103.90
Gross tonnage	3967	Speed service, knots	12.00
Net tonnage	2212	Cargo gear	No
Immersion(load draft) TPC	13.73	Bow thruster	No
Mean draft of ship in heavy ballast	4.35	Boxed	No
Distance from forward end of No.1 Hatch to aft end of last hatch	71.50	Double skin	Yes
Hatch type	Kvaerner Multifold, Crocodile	Open hatch	No
Container (TEU) capacity Hold / Deck	- / -	Rhine fitted	No
		Ammonium Nitrate fitted	Yes
		FeSi fitted	Yes

Hatch details:

- a : Distance from waterline fully ballasted to top of hatch coamings
 b : Distance from waterline fully loaded to top of hatch coamings
 c : Distance from tank top to top of hatch coamings
 d : Max permissible loading on hatch covers
 e : Distance from ship's rail to inside hatch coamings
 f : Height of hatch coamings
 g : Hatch opening
 h : No. of Loadingholes on hatchcovers X diameter in mm

Remarks :

- Ammonium Nitrate fitted in cargo holds 1 and 2 only.
 Ferrosilicon 30%-90% in cago holds 1 and 2 only.
 Ferrosilicon 25%-30% or >90% in all cargo holds.

Htch#	Bale							Grain				Hold dimensions	Compartment :		Communication :		Equipment		
	a	b	c	d	e	f	g	h	Hold#	cbm	cbft		cbm	cbft	#	cbm		Type	No
1	7.00	3.75	8.50	1.75	3.60	1.70	14.80 x 8.00	4 x 600 + 4 x 800	1	1820	64 273	1925	67 980	20.60 x 12.00 x 6.85			Telex 1	421 557910	Inmarsat
2	6.20	3.75	9.35	1.75	1.60	1.70	33.20 x 12.00	4 x 600 + 4 x 800	2	4066	143 591	4086	144 297	37.40 x 12.00 x 9.20			Telex 2	421 557911	Inmarsat
3	5.40	3.75	8.65	1.75	3.60	1.70	12.80 x 8.00	2 x 600 + 4 x 800	3	1832	64 697	1938	68 440	17.90 x 12.00 x 7.00			Tlph 1	+47 922 44 025	Gsm
																	Tlph 2		
																	Fax		
																	Email	w-malm@gtw.dualog.com	