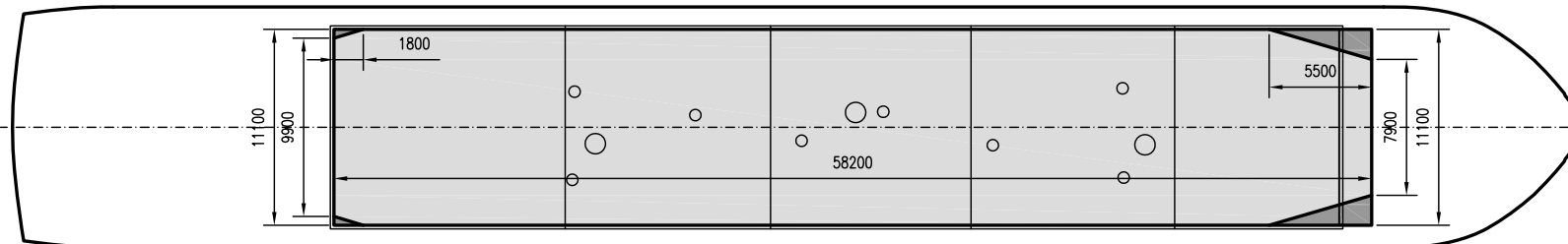
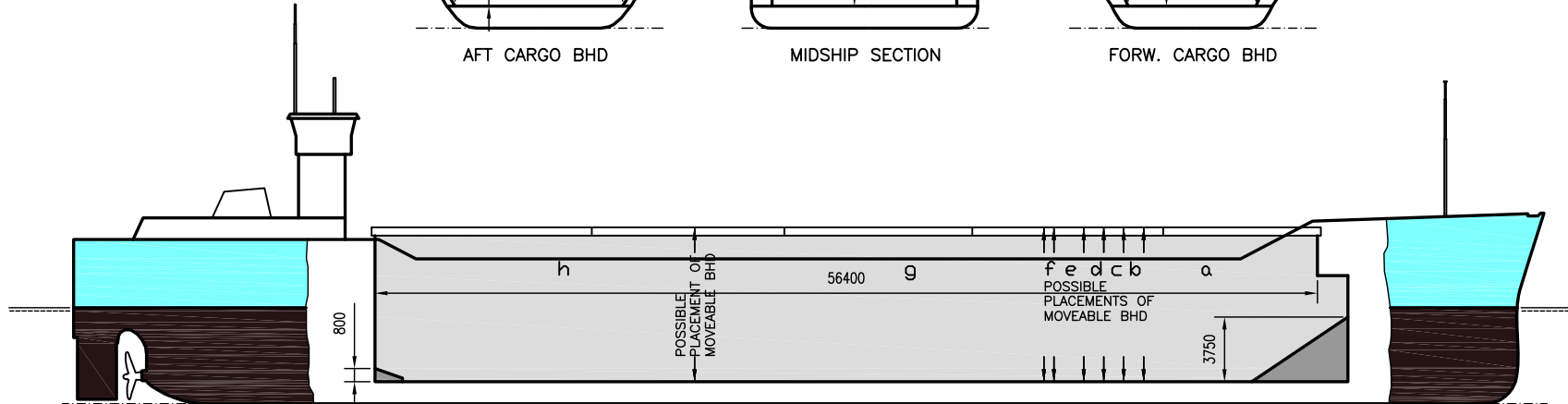
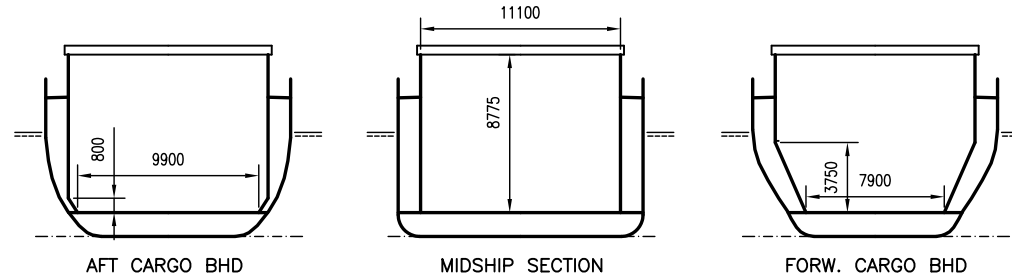


WILSON HORN

DEADWEIGHT GROUP
4200 dwt





WILSON HORN

If not otherwise specified :
Dist/Dim in meters
Weights in m.tons

DWT GROUP 4200
IMO NO 9003536
CALL SIGN DAKT
BUILD 1990
FLAG German

All details given in good faith without guarantee

Builders	Peterswerft, Wewelsfleth, Germany
Classification	GL / +100 A5 + MC E aut. Strengthened for heavy cargo
Length oa	88.20
Breadth mld	13.60
Depth mld	7.70
Draft summer	5.80
Deadweight summer draft	4261
Draft winter	5.80
Deadweight winter draft	4261
Gross tonnage	2827
Net tonnage	1595
Immersion(load draft) TPC	10.99
Mean draft of ship in heavy ballast	3.70
Distance from forward end of No.1 Hatch to aft end of last hatch	56.40
Hatch type	Mac Gregor Pontoon type
Container (TEU) capacity Hold / Deck	105 / 68

Max permissible load on deck, mt/sqm	-
Max permissible load on tanktop, mt/sqm	11.00
Max air draft - 1	21.90
Max air draft - 2	-
Distance from keel to top antenna -1	26.20
Distance from keel to top antenna -2	-
Water ballast capacity	1 827.26
Fuel main engine - capa.(cbm)	95.69
Fuel aux engine - capa.(cbm)	-
Speed service, knots	11.00
Cargo gear	No
Bow thruster	Yes
Boxed	No
Double skin	Yes
Open hatch	No
Rhine fitted	No
Ammonium Nitrate fitted	Yes
FeSi fitted	Yes

Hatch details:

- a : Distance from waterline fully ballasted to top of hatch coamings
- b : Distance from waterline fully loaded to top of hatch coamings
- c : Distance from tank top to top of hatch coamings
- d : Max permissible loading on hatch covers
- e : Distance from ship's rail to inside hatch coamings
- f : Height of hatch coamings
- g : Hatch opening
- h : No. of Loadingholes on hatchcovers X diameter in mm

Remarks :

Nearly boxed hold with 1.80m overhang forward.
Two movable bulkheads, seven possible positions, at frames number 59, 94, 95, 98, 100, 102, 104..

Htch#	Bale							Grain				Hold dimensions	Compartment :		Communication :		Equipment		
	a	b	c	d	e	f	g	h	Hold#	cbm	cbft		cbm	cbft	#	cbm		Type	No
1	6.4	4.8	8.8	1.5	1.25	2.5	56.40 x 11.10	3 x 480mm + 8 x 240mm	1	5665	200 046	5665	200 046	58.20 x 11.10 x 8.80	a	1 149	Telex 1	421 814 610	Inmarsat
															b	117	Telex 2	421 814 611	Inmarsat
															c	117	Tlph 1	+49 172 4284138	Gsm
															d	117	Email	dakt@globeemail.com	
															e	176			
															f	59			
															g	2 053			
															h	1 877			