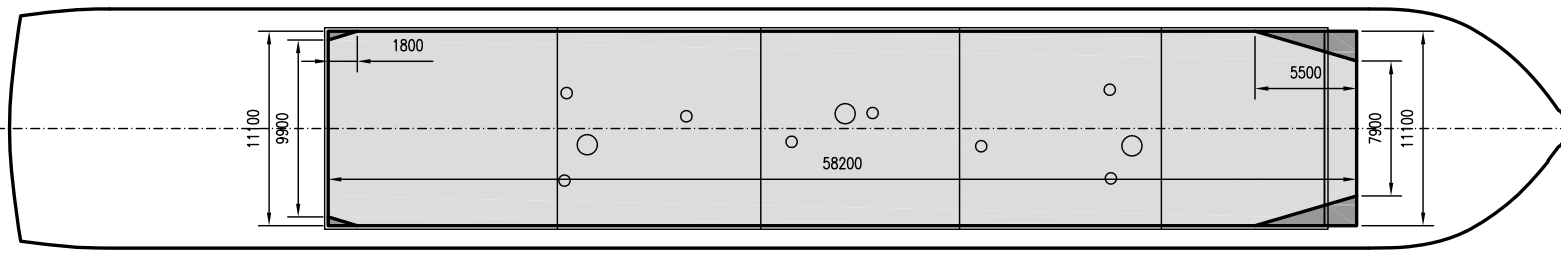
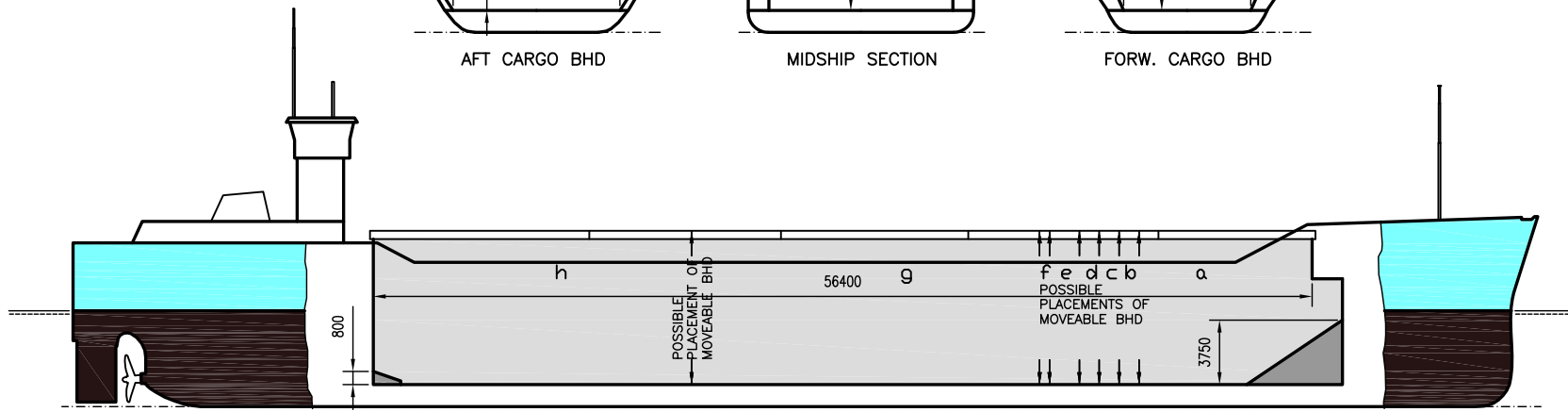
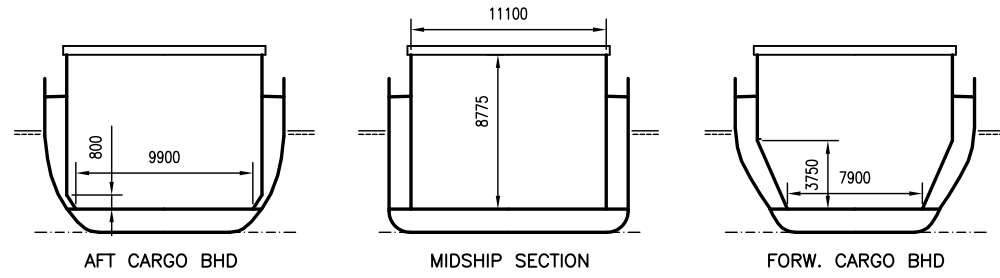


# WILSON HOLM

DEADWEIGHT GROUP  
4200 dwt





# WILSON HOLM

Ex. Forester  
 DWT GROUP 4200  
 IMO NO 9003524  
 CALL SIGN V2JA2  
 BUILD 1990  
 FLAG Antigua & Barbuda

If not otherwise specified :  
 Dist/Dim in meters  
 Weights in m.tons

All details given in good faith without guarantee

**Builders** .....Peterswerft, Wewelsfleth, Germany  
**Classification** .....GL / +100 A5 + MC E aut. Strengthened for heavy cargo  
**Length oa** .....88.20  
**Breadth mld** .....13.60  
**Depth mld** .....7.70  
**Draft summer** .....5.80  
**Deadweight summer draft** .....4261  
**Draft winter** .....5.80  
**Deadweight winter draft** .....4261  
**Gross tonnage** .....2827  
**Net tonnage** .....1595  
**Immersion(load draft) TPC** .....10.99  
**Mean draft of ship in heavy ballast** .....3.70  
**Distance from forward end of No.1 Hatch to aft end of last hatch** .....56.40  
**Hatch type** .....Mac Gregor Pontoon type  
**Container (TEU) capacity Hold / Deck** .....105 / 68

### Hatch details:

a : Distance from waterline fully ballasted to top of hatch coamings  
 b : Distance from waterline fully loaded to top of hatch coamings  
 c : Distance from tank top to top of hatch coamings  
 d : Max permissible loading on hatch covers  
 e : Distance from ship's rail to inside hatch coamings  
 f : Height of hatch coamings  
 g : Hatch opening  
 h : No. of Loadingholes on hatchcovers X diameter in mm

### Remarks :

Nearly boxed hold with 1.80m overhang forward.  
 Two movable bulkheads, seven possible positions, at frames number 59, 94, 95, 98, 100, 102, 104.

**Max permissible load on deck, mt/sqm** ..... -  
**Max permissible load on tanktop, mt/sqm** ..... 11.00  
**Max air draft - 1** ..... 21.90  
**Max air draft - 2** ..... -  
**Distance from keel to top antenna -1** ..... 26.20  
**Distance from keel to top antenna -2** ..... -  
**Water ballast capacity** ..... 1 827.26  
**Fuel main engine - capa.(cbm)** ..... 95.69  
**Fuel aux engine - capa.(cbm)** ..... -  
**Speed service, knots** ..... 11.00  
**Cargo gear** ..... No  
**Bow thruster** ..... .220 KW . Yes  
**Boxed** ..... No  
**Double skin** ..... Yes  
**Open hatch** ..... No  
**Rhine fitted** ..... No  
**Ammonium Nitrate fitted** ..... Yes  
**FeSi fitted** ..... Yes

Htch#	a	b	c	d	e	f	g	h	Hold#	Bale		Grain		Hold dimensions	Compartment :		Communication :		Equipment
										cbm	cbft	cbm	cbft		#	cbm	Type	No	
1	6.4	4.8	8.8	1.5	1.25	2.5	56.40 x 11.10	3 x 480mm + 8 x 240mm	1	5665	200 046	5665	200 046	58.20 x 11.10 x 8.80	a	1 149	Telex 1	430 402 112	Inmarsat
															b	117	Tlph 1	+49 172 4284137	Gsm
															c	117	Email	v2ja2@globeemail.com	
															d	117			
															e	176			
															f	59			
															g	2 053			
															h	1 877			