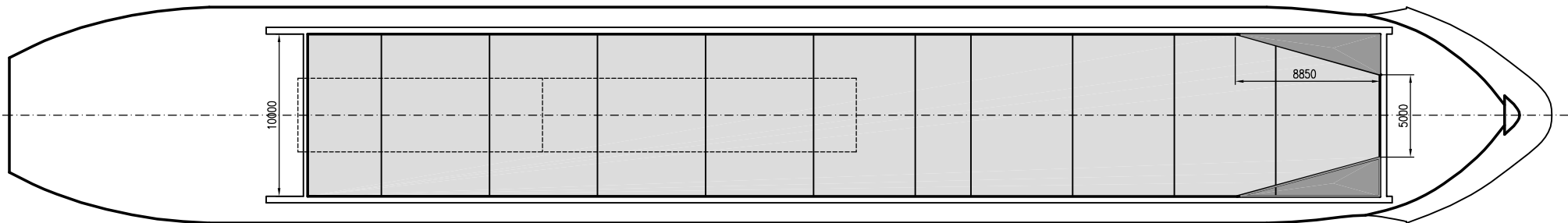
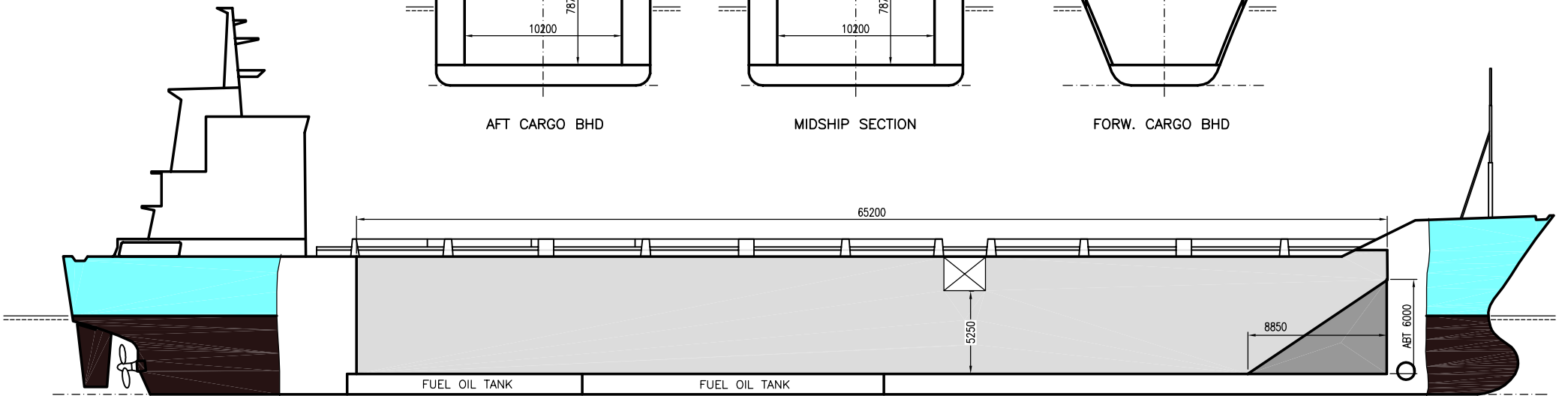
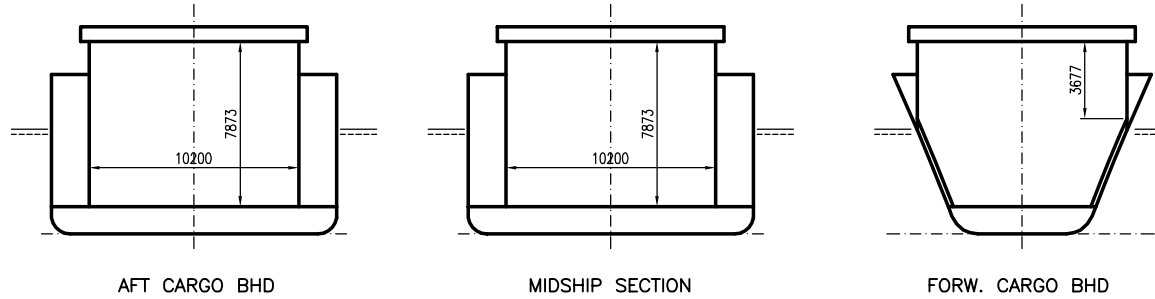


WILSON FJORD

DEADWEIGHT GROUP
3250 dwt





WILSON FJORD

Ex. Victoria
 DWT GROUP 3250
 IMO NO 7631042
 CALL SIGN 8PPB
 BUILD 1977
 FLAG Barbados

If not otherwise specified :
 Dist/Dim in meters
 Weights in m.tons

All details given in good faith without guarantee

Builders Appledore shipbuilders Ltd N.Devon. England
Classification Lloyd's register / I + HULL + MACH general cargo + AUT-UMS
Length oa 95.16
Breadth mld 13.60
Depth mld 7.80
Draft summer 5.51
Deadweight summer draft 3874
Draft winter 5.38
Deadweight winter draft 3750
Gross tonnage 2764
Net tonnage 1437
Immersion(load draft) TPC 10.95
Mean draft of ship in heavy ballast 3.10
Distance from forward end of No.1 Hatch to aft end of last hatch 65.20
Hatch type Mac Gregor Folding type
Container (TEU) capacity Hold / Deck 100 / 100

Max permissible load on deck, mt/sqm 1.64
Max permissible load on tanktop, mt/sqm 5.40
Max air draft - 1 21.10
Max air draft - 2 -
Distance from keel to top antenna -1 26.60
Distance from keel to top antenna -2 -
Water ballast capacity 1 193.00
Fuel main engine - capa.(cbm) 350.00
Fuel aux engine - capa.(cbm) -
Speed service, knots 12.50
Cargo gear No
Bow thruster 180.hp Yes
Boxed Yes
Double skin Yes
Open hatch Yes
Rhine fitted No
Ammonium Nitrate fitted No
FeSi fitted No

Hatch details:

- a : Distance from waterline fully ballasted to top of hatch coamings
 b : Distance from waterline fully loaded to top of hatch coamings
 c : Distance from tank top to top of hatch coamings
 d : Max permissible loading on hatch covers
 e : Distance from ship's rail to inside hatch coamings
 f : Height of hatch coamings
 g : Hatch opening
 h : No. of Loadingholes on hatchcovers X diameter in mm

Remarks :

2 hatches, 1 hold only. 3,5 m free space on deck between hatch no.1 and 2, with vent. channel in the hold underneath deck. Height from tanktop to vent. channel reduced to 5,65 m in this area.

Htch#	Bale							Grain				Hold dimensions	Compartm :		Communication :		Equipment		
	a	b	c	d	e	f	g	h	Hold#	cbm	cbft		cbm	cbft	#	cbm		Type	No
1	6.90	3.90	7.90	1.64	1.65	1.87	24.67 x 10.20	2 x 480mm	1	5100	180 110	5122	180 880	65.20 x 10.20 x 7.90			Telex 1	431 410 610	Inmarsat
2	5.90	3.90	7.90	1.64	1.65	1.87	37.18 x 10.20	6 x 480mm									Telex 2	27739	
																	Tlph 1	+47 916 20 438	Gsm
																	Tlph 2	+47 982 59 611	Gsm
																	Fax	+47 982 70 727	Gsm
																	Email	w-fjord@gtw.dualog.com	