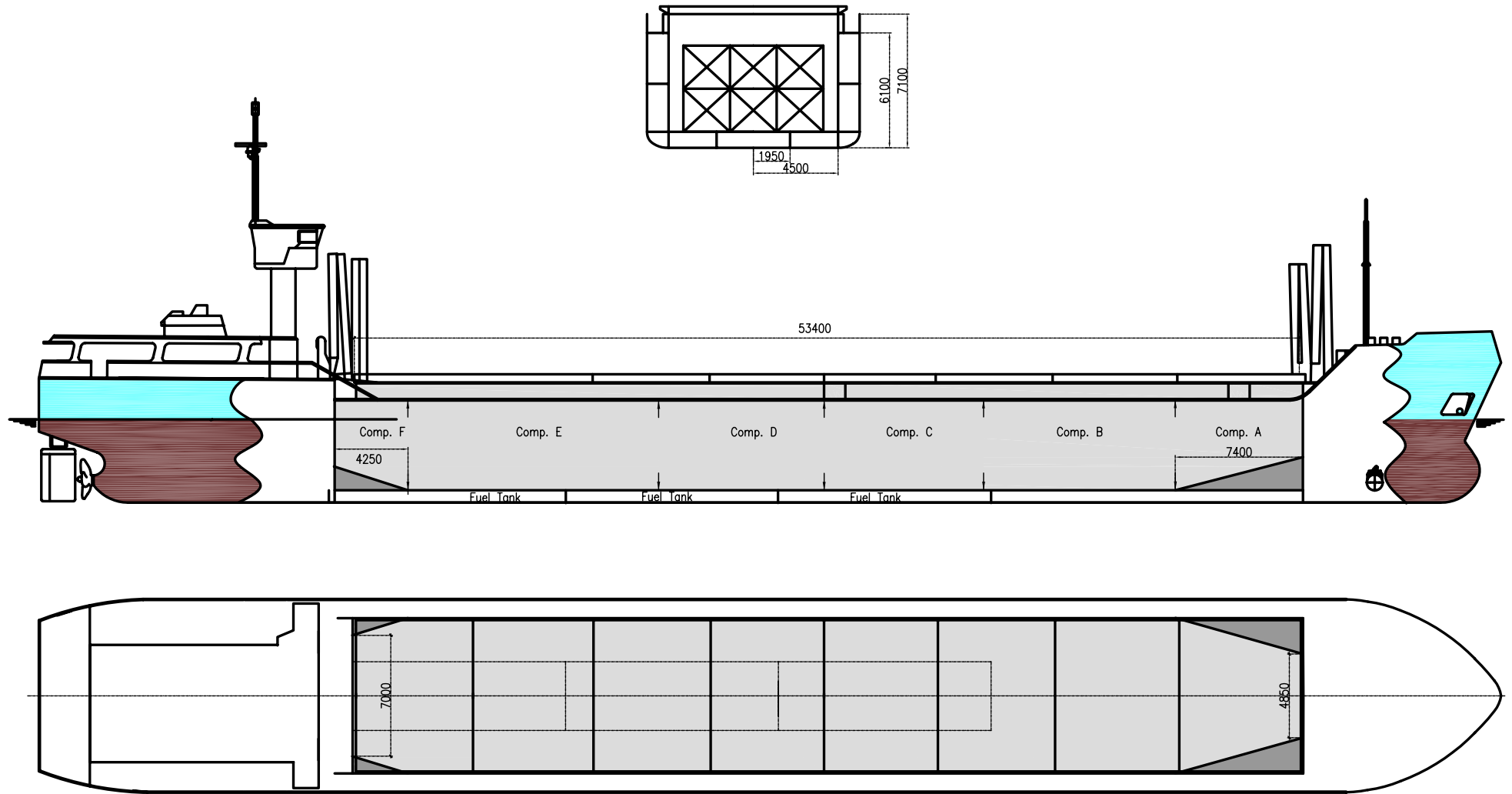




# WILSON ELBE





# WILSON ELBE

If not otherwise specified :  
Dist/Dim in meters  
Weights in m.tons

All details given in good faith without guarantee

DWT GROUP 1850-2400  
IMO NO 9060675  
CALL SIGN 9HGK9  
BUILD 1993  
FLAG MALTA

**Builders** ..... Sloveske Lodenic  
**Classification** ..... GL / 100 A5 M E +MC E AUT  
**Length oa** ..... 82.50  
**Breadth mld** ..... 11.35  
**Depth mld** ..... 6.10  
**Draft summer** ..... 4.79  
**Deadweight summer draft** ..... 2676  
**Draft winter** ..... 4.69  
**Deadweight winter draft** ..... 2593  
**Gross tonnage** ..... 1589  
**Net tonnage** ..... 844  
**Immersion(load draft) TPC** ..... 9.00  
**Mean draft of ship in heavy ballast** ..... 2.60  
**Distance from forward end of No.1 Hatch to aft end of last hatch** ..... 53.40  
**Hatch type** ..... Kvaerner Multifold, Crocodile  
**Container (TEU) capacity Hold / Deck** ..... 46 / 72

### Hatch details:

- a : Distance from waterline fully ballasted to top of hatch coamings  
b : Distance from waterline fully loaded to top of hatch coamings  
c : Distance from tank top to top of hatch coamings  
d : Max permissible loading on hatch covers  
e : Distance from ship's rail to inside hatch coamings  
f : Height of hatch coamings  
g : Hatch opening  
h : No. of Loadingholes on hatchcovers X diameter in mm

### Remarks :

- Semi-boxed hold with small sloping plates in sides forward and aft (see drawing).  
2 moveable bulkheads, full hold height, 5 positions.  
Max length of hold is 54.60m, but free length on tanktop with bulkheads stored in aft position is 52.50 m.

**Max permissible load on deck, mt/sqm** ..... -  
**Max permissible load on tanktop, mt/sqm** ..... 12.00  
**Max air draft - 1** ..... 20.40  
**Max air draft - 2** ..... 10.40  
**Distance from keel to top antenna -1** ..... 23.00  
**Distance from keel to top antenna -2** ..... 13.00  
**Water ballast capacity** ..... 1 025.00  
**Fuel main engine - capa.(cbm)** ..... 134.00  
**Fuel aux engine - capa.(cbm)** ..... -  
**Speed service, knots** ..... 10.50  
**Cargo gear** ..... No  
**Bow thruster** ..... 175 kW ..... Yes  
**Boxed** ..... No  
**Double skin** ..... Yes  
**Open hatch** ..... Yes  
**Rhine fitted** ..... Yes  
**Ammonium Nitrate fitted** ..... Yes  
**FeSi fitted** ..... Yes

Htch#	a	b	c	d	e	f	g	h	Hold#	Bale		Grain		Hold dimensions	Compartment :		Communication :		Equipment
										cbm	cbft	cbm	cbft		#	cbm	Type	No	
1	4.50	2.31	6.23	-	1.18	1.00	53.40 x 9.00		1	3058	108 000	3058	108 000	54.60 x 9.00 x 6.23	a	436	Telex 1	425695313	Inmarsat
															b	606	Telex 2		
															c	509	Tlph 1	+47 941 68 524	Gsm
															d	500	Tlph 2	+47 415 66 245	Gsm
															e	779	Fax		
															f	231	Email	w-elbe@gtw.dualog.com	