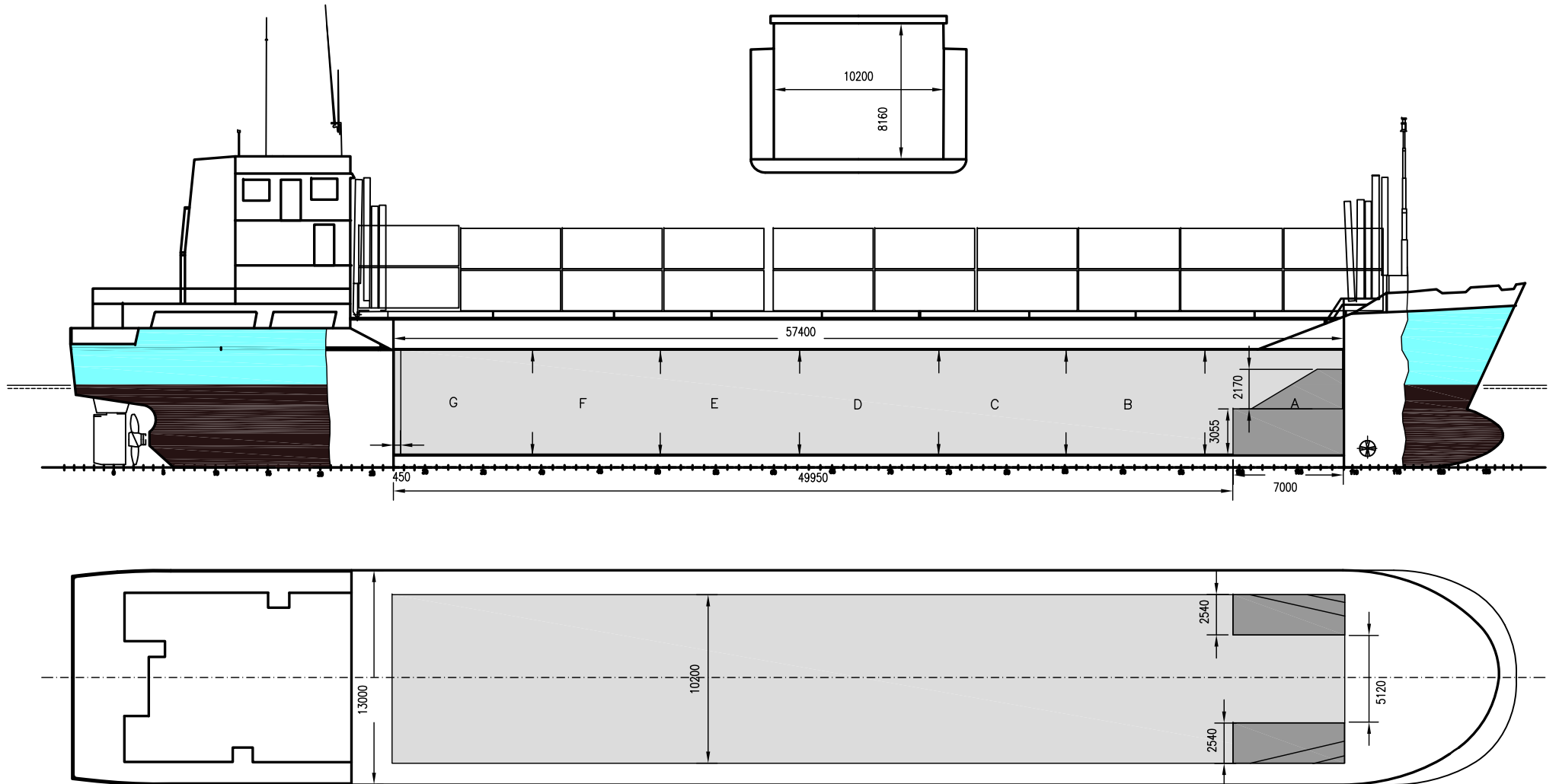




WILSON DVINA

DEADWEIGHT GROUP
3000 dwt





WILSON DVINA

If not otherwise specified :
Dist/Dim in meters
Weights in m.tons

DWT GROUP 3000
IMO NO 9005742
CALL SIGN 8PTC
BUILD 05/1992
FLAG Barbados

All details given in good faith without guarantee

Builders	Estaleiros Navais do Mondego, Figueira da Foz
Classification	GL / +100 A5 E MC E AUT
Length oa	87.60
Breadth mld	13.00
Depth mld	7.11
Draft summer	5.07
Deadweight summer draft	3264
Draft winter	5.07
Deadweight winter draft	3264
Gross tonnage	2481
Net tonnage	1206
Immersion(load draft) TPC	10.40
Mean draft of ship in heavy ballast	3.51
Distance from forward end of No.1 Hatch to aft end of last hatch	57.40
Hatch type	Kvaerner Multifold, Crocodile
Container (TEU) capacity Hold / Deck	104 / 98

Max permissible load on deck, mt/sqm	1.60
Max permissible load on tanktop, mt/sqm	12.00
Max air draft - 1	22.70
Max air draft - 2	-
Distance from keel to top antenna -1	26.70
Distance from keel to top antenna -2	-
Water ballast capacity	1 596.00
Fuel main engine - capa.(cbm)	123.00
Fuel aux engine - capa.(cbm)	-
Speed service, knots	11.00
Cargo gear	No
Bow thruster	130 KW . Yes
Boxed	No
Double skin	Yes
Open hatch	Yes
Rhine fitted	No
Ammonium Nitrate fitted	Yes
FeSi fitted	Yes

Hatch details:

- a : Distance from waterline fully ballasted to top of hatch coamings
- b : Distance from waterline fully loaded to top of hatch coamings
- c : Distance from tank top to top of hatch coamings
- d : Max permissible loading on hatch covers
- e : Distance from ship's rail to inside hatch coamings
- f : Height of hatch coamings
- g : Hatch opening
- h : No. of Loadingholes on hatchcovers X diameter in mm

Remarks :

Fesi fitted for packaged goods only.

Htch#	Bale							Grain				Hold dimensions	Compartm :		Communication :		Equipment		
	a	b	c	d	e	f	g	h	Hold#	cbm	cbft		cbm	cbft	#	cbm		Type	No
1	5.60	3.80	8.16	1.60	1.26	2.27	57.40 x 10.20	17 x 730mm	1	4639	163 838	4642	163 939	57.40 x 10.20 x 8.20	a	580	Telex 1	431 422 010	Inmarsat
															b	676	Telex 2	431 422 011	Inmarsat
															c	618	Tlph 1	+47 417 94317	Gsm
															d	676	Tlph 2	+47 417 94231	Gsm
															e	676	Fax	+47 901 30731	Gsm
															f	618	Email	w-dvina@gtw.dualog.com	
															g	638			