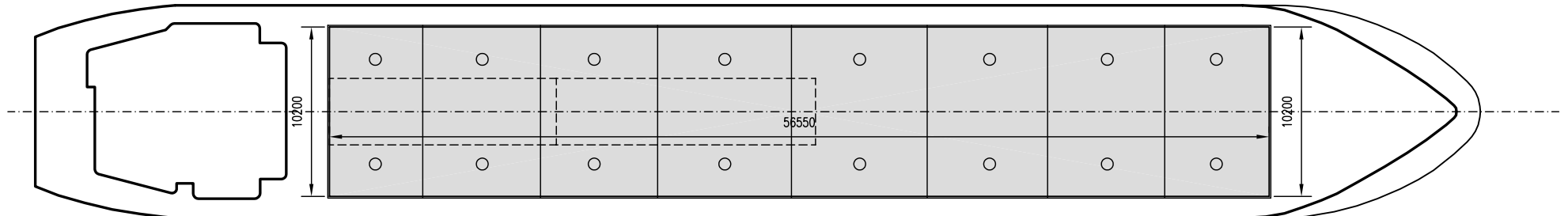
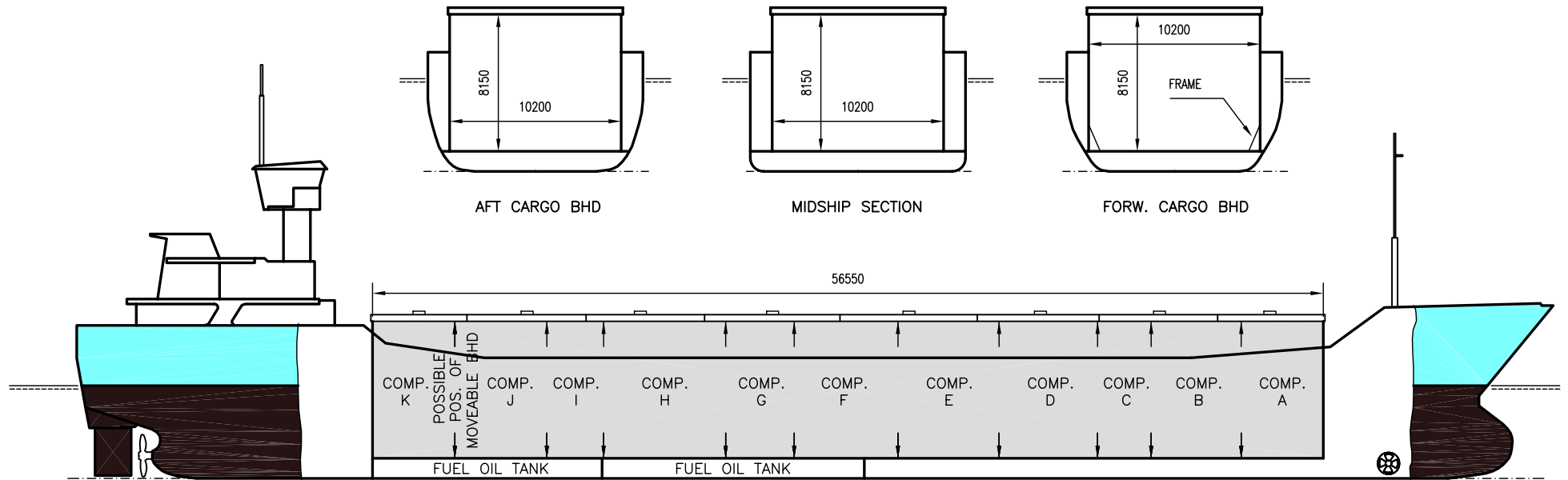




WILSON BRUGGE

DEADWEIGHT GROUP
3500 dwt





WILSON BRUGGE

Ex. Northern Larsnes
 DWT GROUP 3500
 IMO NO 9150494
 CALL SIGN 9HFR5
 BUILD 12/1996
 FLAG Malta

If not otherwise specified :
 Dist/Dim in meters
 Weights in m.tons

All details given in good faith without guarantee

Builders Slovenska Lodenice AS, Komarno Slovakia
Classification BV / I 3/3 + E + ICE + HEAVY CARGO + CONTAINER
Length oa 88.00
Breadth mld 12.80
Depth mld 7.10
Draft summer 5.51
Deadweight summer draft 3680
Draft winter 5.40
Deadweight winter draft 3562
Gross tonnage 2446
Net tonnage 1369
Immersion(load draft) TPC 10.10
Mean draft of ship in heavy ballast 3.00
Distance from forward end of No.1 Hatch to aft end of last hatch 56.55
Hatch type Kvaerner Multifold crocodile, with hydraulic control
Container (TEU) capacity Hold / Deck 108 / 68

Hatch details:

a : Distance from waterline fully ballasted to top of hatch coamings
 b : Distance from waterline fully loaded to top of hatch coamings
 c : Distance from tank top to top of hatch coamings
 d : Max permissible loading on hatch covers
 e : Distance from ship's rail to inside hatch coamings
 f : Height of hatch coamings
 g : Hatch opening
 h : No. of Loadingholes on hatchcovers X diameter in mm

Remarks :

2 moveable bulkheads, full hold height, 10 positions. Free length on tanktop 55.85M when bulkheads stored in aft position. 1 frame each side, 1.25M from forward end of hold, height 1.78M from tanktop and up, protruding abt 0.56M into hold at tanktop level. Navigation bridge can be lowered and antennas/masts collapsed for River Rhine transit.
 No containerfittings on board.
 Vessel able to call NAABSA ports.

Max permissible load on deck, mt/sqm 1.56
Max permissible load on tanktop, mt/sqm 15.00
Max air draft - 1 19.00
Max air draft - 2 10.20
Distance from keel to top antenna -1 24.50
Distance from keel to top antenna -2 15.80
Water ballast capacity 1 648.00
Fuel main engine - capa.(cbm) 163.00
Fuel aux engine - capa.(cbm) 30.00
Speed service, knots 10.50
Cargo gear No
Bow thruster250.HP. . Yes
Boxed Yes
Double skin Yes
Open hatch Yes
Rhine fitted No
Ammonium Nitrate fitted Yes
FeSi fitted Yes

Htch#	Bale							Grain				Hold dimensions	Compartm :		Communication :		Equipment		
	a	b	c	d	e	f	g	h	Hold#	cbm	cbft		cbm	cbft	#	cbm		Type	No
1	6.20	3.90	8.15	1.56	1.30	2.28	56.50 x 10.20	16 x 600mm	1	4620	163 155	4650	164 215	56.55 x 10.20 x 8.15	a	430	Telex 1	424 977 210	Inmarsat
															b	444	Telex 2		
															c	254	Tlph 1	+47 934 65 484	Gsm
															d	465	Tlph 2	+47 930 30 283	Gsm
															e	489	Fax	+47 930 71 518	Gsm
															f	519	Email	w-brugge@gtw.dualog.com	
															g	329			
															h	626			
															i	270			
															j	429			
															k	394			