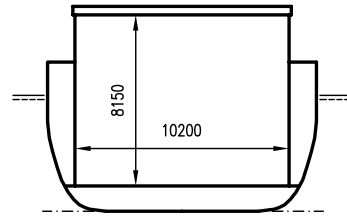
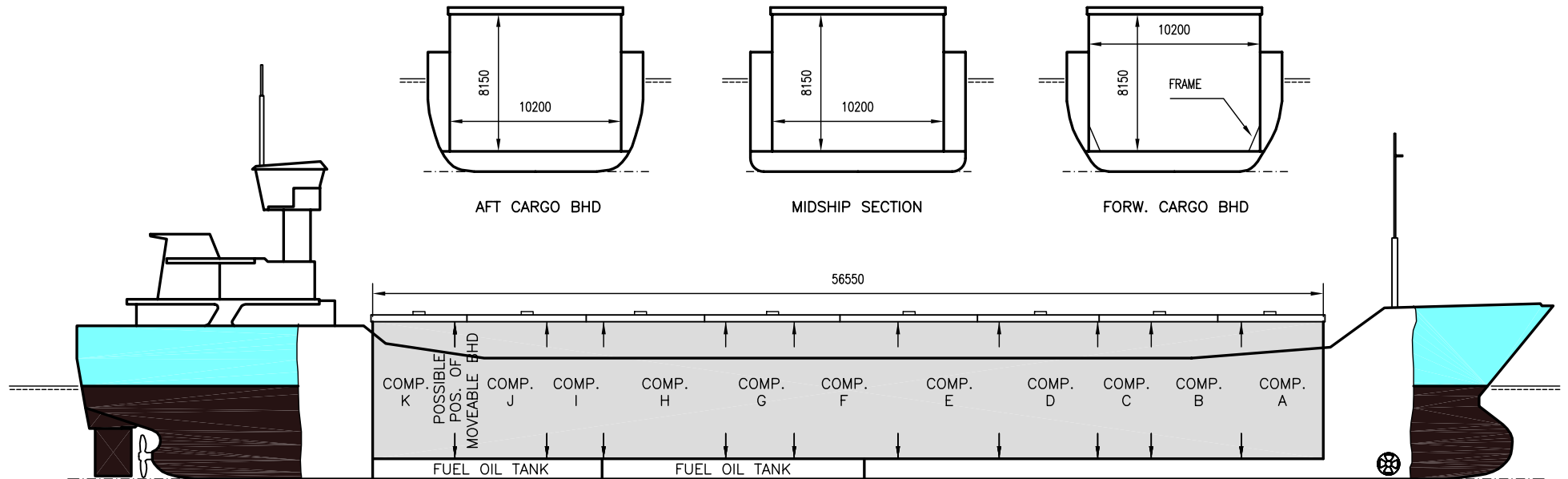


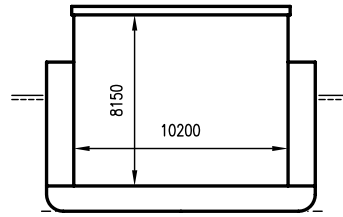


# WILSON BRAKE

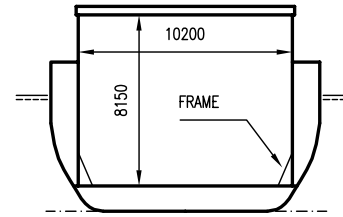
DEADWEIGHT GROUP  
3500 dwt



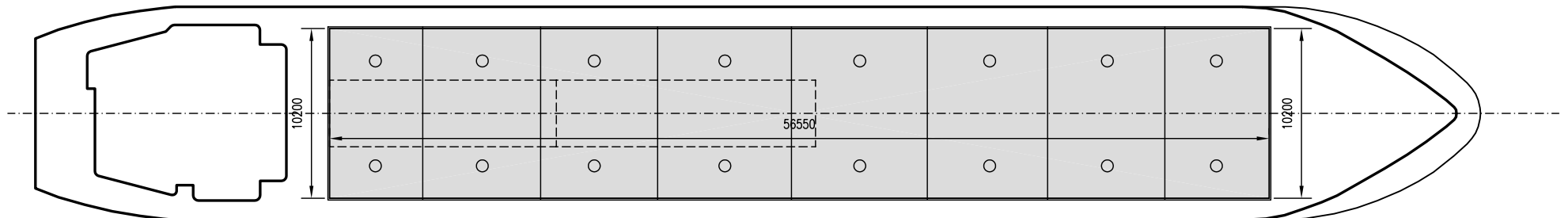
AFT CARGO BHD



MIDSHIP SECTION



FORW. CARGO BHD





# WILSON BRAKE

Ex. Northern Lindnes  
 DWT GROUP 3500  
 IMO NO 9150511  
 CALL SIGN 9HJ15  
 BUILD 05/1997  
 FLAG Malta

If not otherwise specified :  
 Dist/Dim in meters  
 Weights in m.tons

All details given in good faith without guarantee

<b>Builders</b>	Slovenska Lodnice AS, Komarno Slovakia
<b>Classification</b>	BV / I 3/3 + E + ICE + HEAVY CARGO + CONTAINER
<b>Length oa</b>	88.00
<b>Breadth mld</b>	12.80
<b>Depth mld</b>	7.10
<b>Draft summer</b>	5.51
<b>Deadweight summer draft</b>	3710
<b>Draft winter</b>	5.40
<b>Deadweight winter draft</b>	3592
<b>Gross tonnage</b>	2446
<b>Net tonnage</b>	1369
<b>Immersion(load draft) TPC</b>	10.10
<b>Mean draft of ship in heavy ballast</b>	3.00
<b>Distance from forward end of No.1 Hatch to aft end of last hatch</b>	56.55
<b>Hatch type</b>	Kvaerner Multifold crocodile, with hydraulic control
<b>Container (TEU) capacity Hold / Deck</b>	108 / 68

<b>Max permissible load on deck, mt/sqm</b>	1.56
<b>Max permissible load on tanktop, mt/sqm</b>	15.00
<b>Max air draft - 1</b>	19.00
<b>Max air draft - 2</b>	10.20
<b>Distance from keel to top antenna -1</b>	24.50
<b>Distance from keel to top antenna -2</b>	15.80
<b>Water ballast capacity</b>	1 648.00
<b>Fuel main engine - capa.(cbm)</b>	163.00
<b>Fuel aux engine - capa.(cbm)</b>	30.00
<b>Speed service, knots</b>	10.50
<b>Cargo gear</b>	No
<b>Bow thruster</b>	.250.HP. Yes
<b>Boxed</b>	Yes
<b>Double skin</b>	Yes
<b>Open hatch</b>	Yes
<b>Rhine fitted</b>	No
<b>Ammonium Nitrate fitted</b>	Yes
<b>FeSi fitted</b>	Yes

**Hatch details:**

- a : Distance from waterline fully ballasted to top of hatch coamings
- b : Distance from waterline fully loaded to top of hatch coamings
- c : Distance from tank top to top of hatch coamings
- d : Max permissible loading on hatch covers
- e : Distance from ship's rail to inside hatch coamings
- f : Height of hatch coamings
- g : Hatch opening
- h : No. of Loadingholes on hatchcovers X diameter in mm

**Remarks :**

2 moveable bulkheads, full hold height, 10 positions. Free length on tanktop 55.85M when bulkheads stored in aft position. 1 frame each side, 1.25M from forward end of hold, height 1.78M from tanktop and up, protruding abt 0.56M into hold at tanktop level. Navigation bridge can be lowered and antennas/masts collapsed for River Rhine transit.  
 No containerfittings on board.  
 Vessel able to call NAABSA ports.  
 Lenght of hold w. Bulkhead in storage position: 55.9 m.

Htch#	Bale							Grain				Hold dimensions	Compartm :		Communication :		Equipment		
	a	b	c	d	e	f	g	h	Hold#	cbm	cbft		cbm	cbft	#	cbm		Type	No
1	6.20	3.90	8.15	1.56	1.30	2.28	56.50 x 10.20	16 x 600	1	4620	163 155	4650	164 215	56.55 x 10.20 x 8.15	a	430	Telex 1	424 987 910	Inmarsat
															b	444	Telex 2		
															c	254	Tlph 1	+47 934 65 483	Gsm
															d	465	Tlph 2	+47 934 65 499	Gsm
															e	489	Fax	+47 934 71 139	Gsm
															f	519	Email	w-brake@gtw.dualog.com	
															g	329			
															h	626			
															i	270			
															j	429			
															k	394			