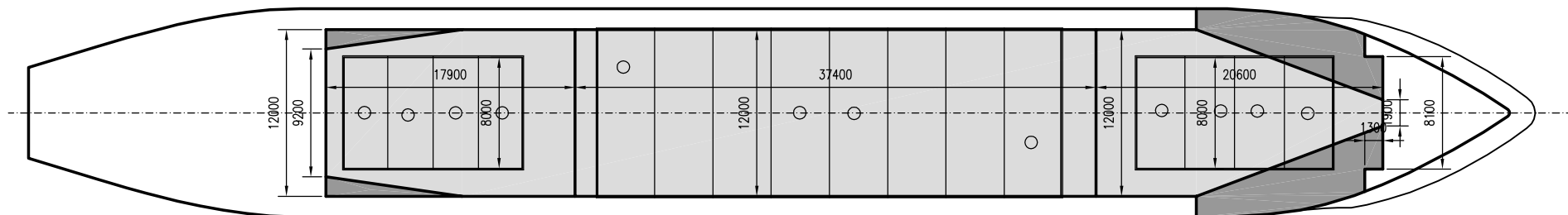
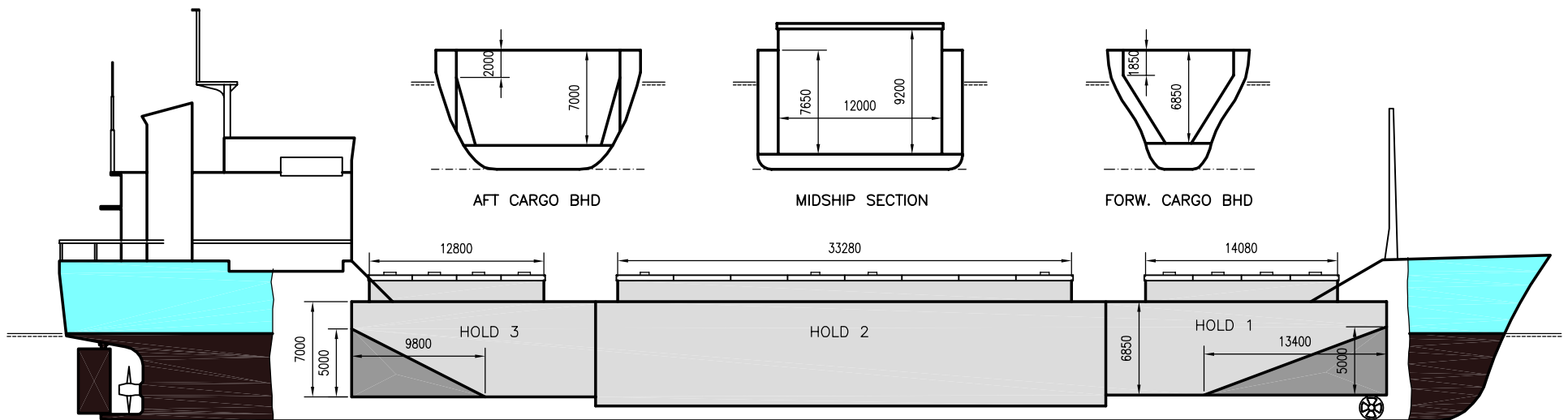


WILSON BAR

DEADWEIGHT GROUP

6000 dwt





WILSON BAR

Ex. Korsnes
 DWT GROUP 6000
 IMO NO 7810208
 CALL SIGN 9HWW6
 BUILD 1979
 FLAG Malta

If not otherwise specified :
 Dist/Dim in meters
 Weights in m.tons

All details given in good faith without guarantee

Builders	STORVIK MEK. VERKSTED, NORWAY	Max permissible load on deck, mt/sqm	1.15
Classification	BV / I *HULL *MACH aen.cargo. heavv cargo. unrestr.nav. ICE * AUT-UMS	Max permissible load on tanktop, mt/sqm	9.50
Length oa	107.40	Max air draft - 1	27.00
Breadth mld	15.00	Max air draft - 2	-
Depth mld	8.75	Distance from keel to top antenna -1	31.35
Draft summer	6.74	Distance from keel to top antenna -2	-
Deadweight summer draft	6156	Water ballast capacity	2 035.60
Draft winter	6.61	Fuel main engine - capa.(cbm)	350.00
Deadweight winter draft	5965	Fuel aux engine - capa.(cbm)	80.00
Gross tonnage	3967	Speed service, knots	11.50
Net tonnage	2212	Cargo gear	No
Immersion(load draft) TPC	13.37	Bow thruster	No
Mean draft of ship in heavy ballast	4.35	Boxed	No
Distance from forward end of No.1 Hatch to aft end of last hatch	71.00	Double skin	Yes
Hatch type	Kvaerner Multifold, Crocodile	Open hatch	No
Container (TEU) capacity Hold / Deck	- / -	Rhine fitted	No
		Ammonium Nitrate fitted	Yes
		FeSi fitted	Yes

Hatch details:

- a : Distance from waterline fully ballasted to top of hatch coamings
 b : Distance from waterline fully loaded to top of hatch coamings
 c : Distance from tank top to top of hatch coamings
 d : Max permissible loading on hatch covers
 e : Distance from ship's rail to inside hatch coamings
 f : Height of hatch coamings
 g : Hatch opening
 h : No. of Loadingholes on hatchcovers X diameter in mm

Remarks :

- Ammonium Nitrate fitted in CARGO HOLD 1 ONLY.
 Ferrosilicon 30%-90% in CARGO HOLD 2 ONLY.
 Ferrosilicon 25%-30% or >90% in CARGO HOLD 2 ONLY.
 Please see certificate for restrictions on FESI & AMM.NITRATE cargoes.

Htch#	Bale							Grain				Hold dimensions	Compartment :		Communication :		Equipment		
	a	b	c	d	e	f	g	h	Hold#	cbm	cbft		cbm	cbft	#	cbm		Type	No
1	7.00	3.75	8.50	1.75	3.30	1.70	14.80 x 8.00	4 x 600mm	1	1819	64 254	1825	67 980	20.60 x 12.00 x 6.85			Telex 1	424 893 710	Inmarsat
2	6.20	3.75	9.30	1.75	1.35	1.70	33.20 x 12.00	4 x 600mm	2	4065	143 571	4086	144 294	37.40 x 12.00 x 9.20			Telex 2		
3	5.40	3.75	8.65	1.75	3.30	1.70	12.80 x 8.00	4 x 600mm	3	1831	64 670	1938	68 430	17.90 x 12.00 x 7.00			Tlph 1	+47 932 07 681	Gsm
																	Fax		
																	Email	w-bar@gtw.dualog.com	