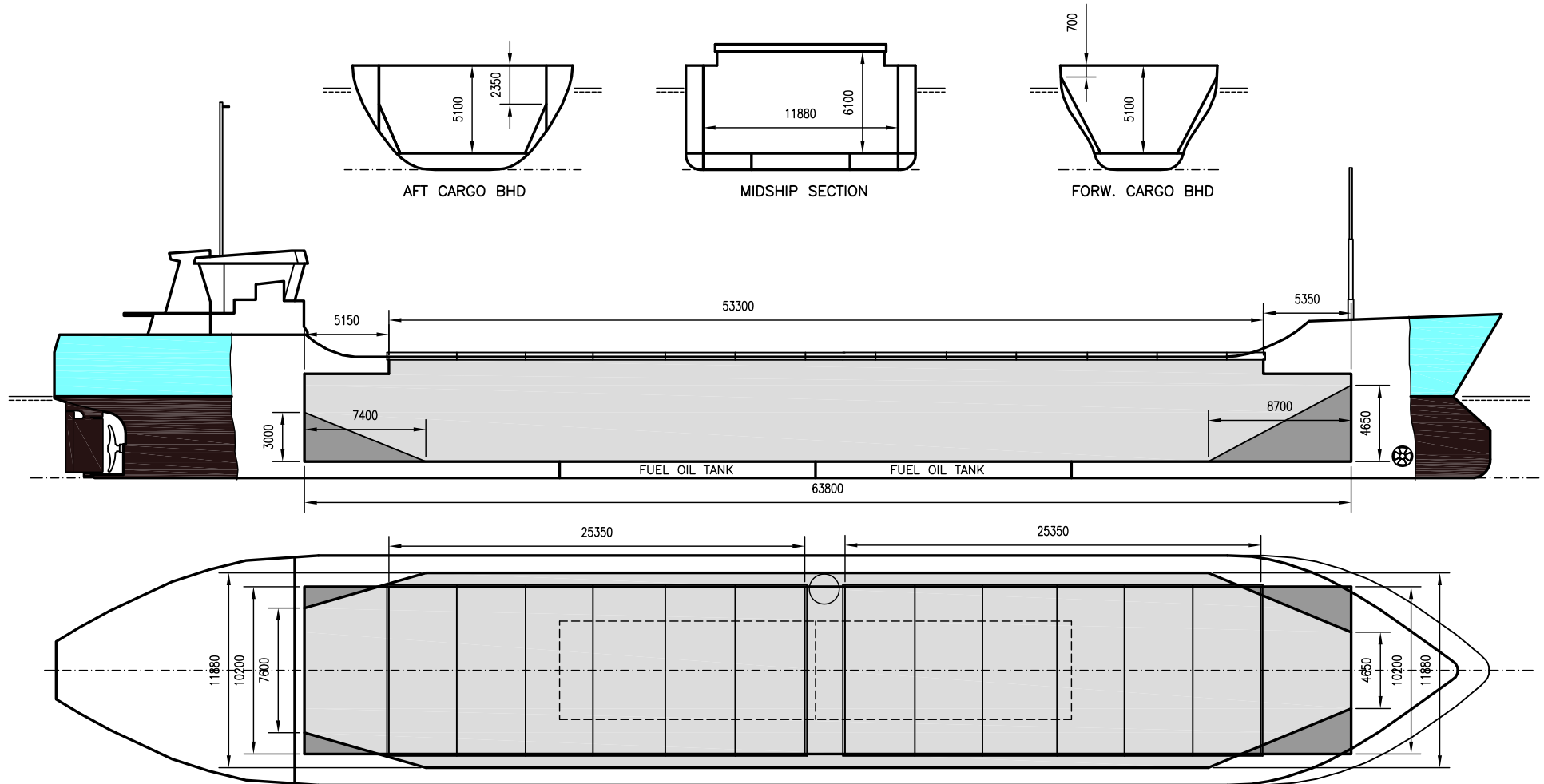


TORPO

DEADWEIGHT GROUP
3500 dwt





TORPO

If not otherwise specified :
Dist/Dim in meters
Weights in m.tons

All details given in good faith without guarantee

DWT GROUP 3500
IMO NO 8908791
CALL SIGN C6QJ2
BUILD 1990
FLAG Bahamas

Builders **Bodewes Scheepswerken BV**
Classification BV // I*HULL*MACH*AUT-UMS gen.cargo ship -unres.nav. ICE
Length oa 88.15
Breadth mld 14.00
Depth mld 6.35
Draft summer 5.00
Deadweight summer draft 3520
Draft winter 4.90
Deadweight winter draft 3422
Gross tonnage 1986
Net tonnage 1246
Immersion(load draft) TPC 10.70
Mean draft of ship in heavy ballast 2.88
Distance from forward end of No.1 Hatch to aft end of last hatch 53.50
Hatch type Pontoon type
Container (TEU) capacity Hold / Deck 64 / 39

Max permissible load on deck, mt/sqm 2.30
Max permissible load on tanktop, mt/sqm 12.00
Max air draft - 1 26.70
Max air draft - 2 -
Distance from keel to top antenna -1 30.00
Distance from keel to top antenna -2 -
Water ballast capacity 1 210.00
Fuel main engine - capa.(cbm) 204.00
Fuel aux engine - capa.(cbm) -
Speed service, knots 10.50
Cargo gear No
Bow thruster 240 KW Yes
Boxed No
Double skin Yes
Open hatch No
Rhine fitted No
Ammonium Nitrate fitted Yes
FeSi fitted Yes

Hatch details:

a : Distance from waterline fully ballasted to top of hatch coamings
b : Distance from waterline fully loaded to top of hatch coamings
c : Distance from tank top to top of hatch coamings
d : Max permissible loading on hatch covers
e : Distance from ship's rail to inside hatch coamings
f : Height of hatch coamings
g : Hatch opening
h : No. of Loadingholes on hatchcovers X diameter in mm

Remarks :

Vessel designed for NAABSA condition.

Htch#	Bale							Grain				Hold dimensions	Compartm :		Communication :		Equipment		
	a	b	c	d	e	f	g	h	Hold#	cbm	cbft		cbm	cbft	#	cbm		Type	No
1	4.30	2.18	6.10	1.75	1.90	0.83	25.35 x 10.20	0	1	4238	149 647	4262	150 523	63.90 x 11.70 x 5.10			Telex 1	430 808 110	Inmarsat
2	4.30	2.18	6.10	1.75	1.90	0.83	25.35 x 10.20	0									Telex 2		
																	Tlph 1	+47 924 47 609	Gsm
																	Tlph 2		
																	Fax		
																	Email	torpo@gtw.dualog.com	