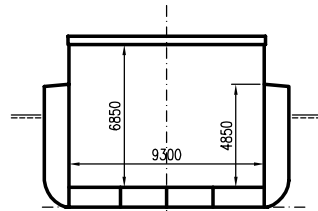


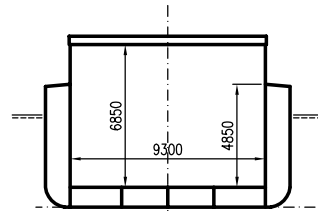


THEBE

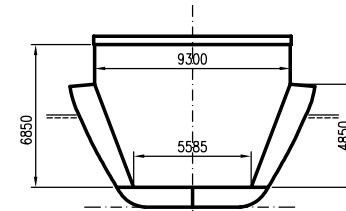
DEADWEIGHT GROUP
1850 – 2400 dwt



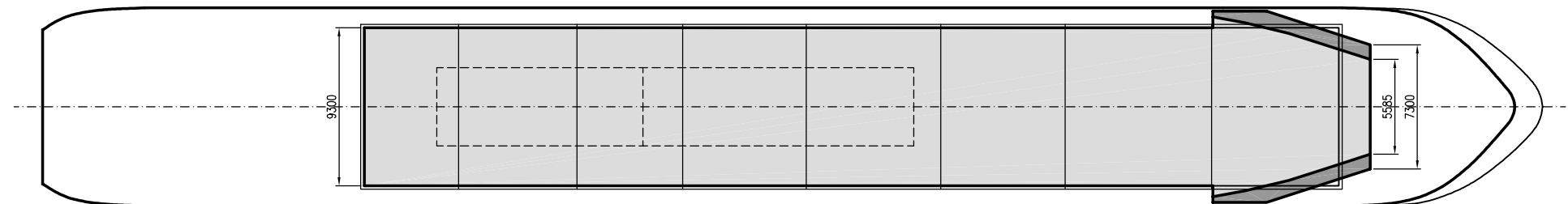
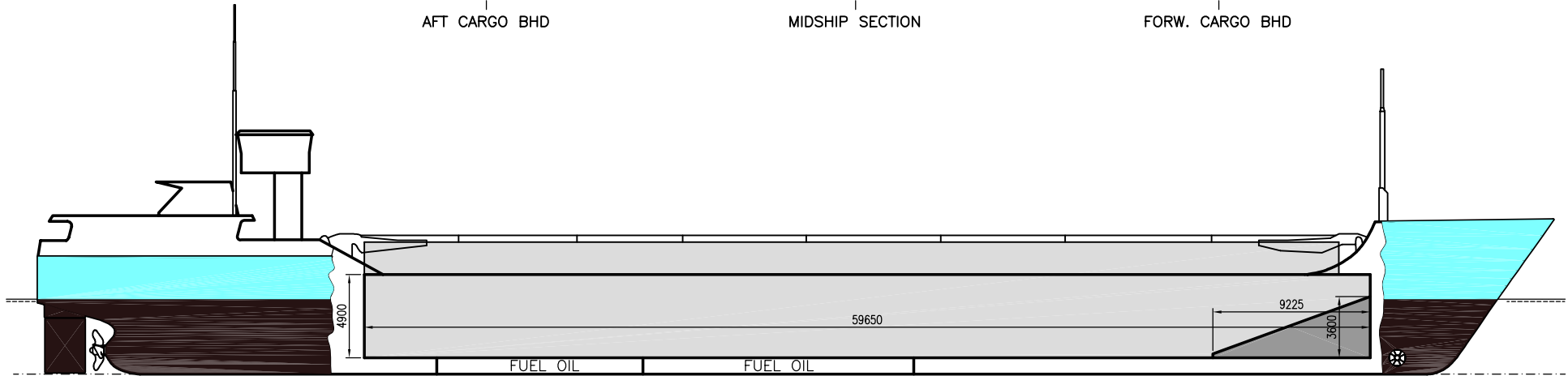
AFT CARGO BHD



MIDSHIP SECTION



FORW. CARGO BHD





THEBE

If not otherwise specified :
Dist/Dim in meters
Weights in m.tons

All details given in good faith without guarantee

DWT GROUP 1850-2400
IMO NO 9199696
CALL SIGN V2OS
BUILD 06/2000
FLAG Antigua & Barbuda

Builders

Classification BV // I 3/3 E AUT MC Fin/Swe Ice Class 1B

Length oa 89.60

Breadth mld 11.65

Depth mld 5.80

Draft summer 4.48

Deadweight summer draft 2460

Draft winter 4.39

Deadweight winter draft 2370

Gross tonnage 1846

Net tonnage 1081

Immersion(load draft) TPC 9.56

Mean draft of ship in heavy ballast 3.12

Distance from forward end of No.1 Hatch to aft end of last hatch 57.81

Hatch type Kvaerner Multifold crocodile, with hydraulic control

Container (TEU) capacity Hold / Deck 52 / 72

Max permissible load on deck, mt/sqm 1.00

Max permissible load on tanktop, mt/sqm 15.00

Max air draft - 1 19.88

Max air draft - 2 8.48

Distance from keel to top antenna -1 23.00

Distance from keel to top antenna -2 11.60

Water ballast capacity 1 118.03

Fuel main engine - capa.(cbm) 150.11

Fuel aux engine - capa.(cbm) -

Speed service, knots 11.00

Cargo gear No

Bow thruster260.HP. . Yes

Boxed No

Double skin Yes

Open hatch Yes

Rhine fitted Yes

Ammonium Nitrate fitted Yes

FeSi fitted Yes

Hatch details:

- a : Distance from waterline fully ballasted to top of hatch coamings
b : Distance from waterline fully loaded to top of hatch coamings
c : Distance from tank top to top of hatch coamings
d : Max permissible loading on hatch covers
e : Distance from ship's rail to inside hatch coamings
f : Height of hatch coamings
g : Hatch opening
h : No. of Loadingholes on hatchcovers X diameter in mm

Remarks :

- Vessel fitted with 2 movable bulkheads, 8 different positions.
Free length on tanktop with both bulkheads in aft storage position about 58.50m.

| Htch# | a | b | c | d | e | f | g | h | Hold# | Bale | | Grain | | Hold dimensions | Compartment : | | Communication : | | Equipment |
|-------|------|------|------|------|------|------|--------------|---|-------|------|---------|-------|---------|---------------------|---------------|-----|-----------------|------------------------|-----------|
| | | | | | | | | | | cbm | cbft | cbm | cbft | | # | cbm | Type | No | |
| 1 | 4.64 | 3.32 | 6.85 | 1.56 | 1.18 | 2.00 | 57.81 x 9.30 | 0 | 1 | 3582 | 126 512 | 3674 | 129 748 | 57.81 x 9.30 x 6.85 | 1 | 562 | Telex 1 | 430 402 134 | Inmarsat |
| | | | | | | | | | | | | | | | 2 | 196 | Telex 2 | 430 402 135 | Inmarsat |
| | | | | | | | | | | | | | | | 3 | 430 | Tlph 1 | +49 173 6130364 | Gsm |
| | | | | | | | | | | | | | | | 4 | 851 | Tlph 2 | | |
| | | | | | | | | | | | | | | | 5 | 92 | Fax | | |
| | | | | | | | | | | | | | | | 6 | 700 | Email | 430402134@c.xantic.net | |
| | | | | | | | | | | | | | | | 7 | 508 | | | |
| | | | | | | | | | | | | | | | 8 | 196 | | | |
| | | | | | | | | | | | | | | | 9 | 226 | | | |