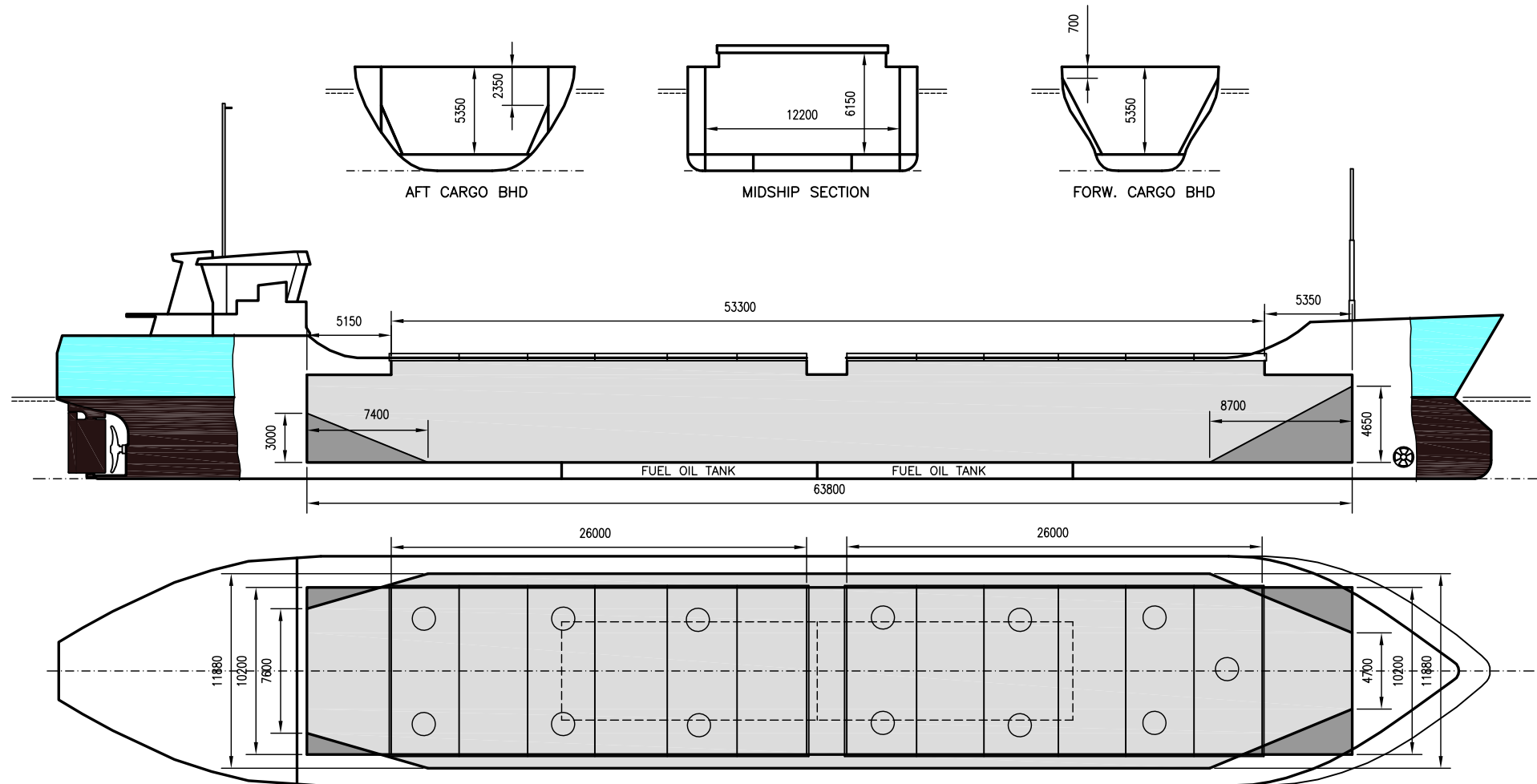


# PLATO

DEADWEIGHT GROUP  
3500 dwt





# PLATO

If not otherwise specified :  
Dist/Dim in meters  
Weights in m.tons

All details given in good faith without guarantee

DWT GROUP 3500  
IMO NO 8822636  
CALL SIGN 8PRX  
BUILD 10/1989  
FLAG Barbados

<b>Builders</b> .....	<b>Pattje Waterhuizen</b>	<b>Max permissible load on deck, mt/sqm</b> .....	2.30
<b>Classification</b> .....	BV / I*HULL*MACH aen.cargo. heavu cargo. unrestr.nav + AUT-UMS.	<b>Max permissible load on tanktop, mt/sqm</b> .....	12.00
<b>Length oa</b> .....	88.15	<b>Max air draft - 1</b> .....	24.00
<b>Breadth mld</b> .....	14.18	<b>Max air draft - 2</b> .....	-
<b>Depth mld</b> .....	6.35	<b>Distance from keel to top antenna -1</b> .....	27.00
<b>Draft summer</b> .....	5.01	<b>Distance from keel to top antenna -2</b> .....	-
<b>Deadweight summer draft</b> .....	3677	<b>Water ballast capacity</b> .....	1 189.39
<b>Draft winter</b> .....	4.90	<b>Fuel main engine - capa.(cbm)</b> .....	188.50
<b>Deadweight winter draft</b> .....	3568	<b>Fuel aux engine - capa.(cbm)</b> .....	-
<b>Gross tonnage</b> .....	1990	<b>Speed service, knots</b> .....	11.00
<b>Net tonnage</b> .....	1271	<b>Cargo gear</b> .....	No
<b>Immersion(load draft) TPC</b> .....	10.70	<b>Bow thruster</b> .....	236 Kw . Yes
<b>Mean draft of ship in heavy ballast</b> .....	2.83	<b>Boxed</b> .....	No
<b>Distance from forward end of No.1 Hatch to aft end of last hatch</b> .....	53.50	<b>Double skin</b> .....	Yes
<b>Hatch type</b> .....	Pontoon type	<b>Open hatch</b> .....	No
<b>Container (TEU) capacity Hold / Deck</b> .....	- / -	<b>Rhine fitted</b> .....	Yes
		<b>Ammonium Nitrate fitted</b> .....	No
		<b>FeSi fitted</b> .....	Yes

## Hatch details:

- a : Distance from waterline fully ballasted to top of hatch coamings  
b : Distance from waterline fully loaded to top of hatch coamings  
c : Distance from tank top to top of hatch coamings  
d : Max permissible loading on hatch covers  
e : Distance from ship's rail to inside hatch coamings  
f : Height of hatch coamings  
g : Hatch opening  
h : No. of Loadingholes on hatchcovers X diameter in mm

## Remarks :

Htch#								h	Hold#	Bale		Grain		Hold dimensions	Compartment :		Communication :		Equipment
	a	b	c	d	e	f	g			cbm	cbft	cbm	cbft		#	cbm	Type	No	
1	4.80	2.22	6.22	1.75	1.90	0.86	26.00 x 10.20	7 x 320mm	1	4455	157 319	4469	157 839	63.70 x 12.20 x 5.35	1	2 164	Telex 1	431418910	Inmarsat
2	4.30	2.22	6.22	1.75	1.90	0.86	26.00 x 10.20	6 x 320mm							2	2 304	Telex 2	431418911	Inmarsat
																	Tlph 1	+47 995 67 568	Gsm
																	Tlph 2		
																	Fax		
																	Email	plato@gtw.dualog.com	