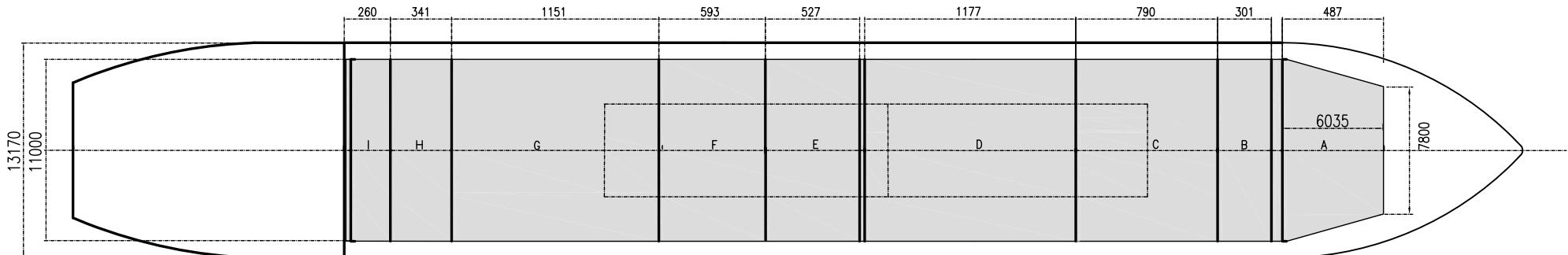
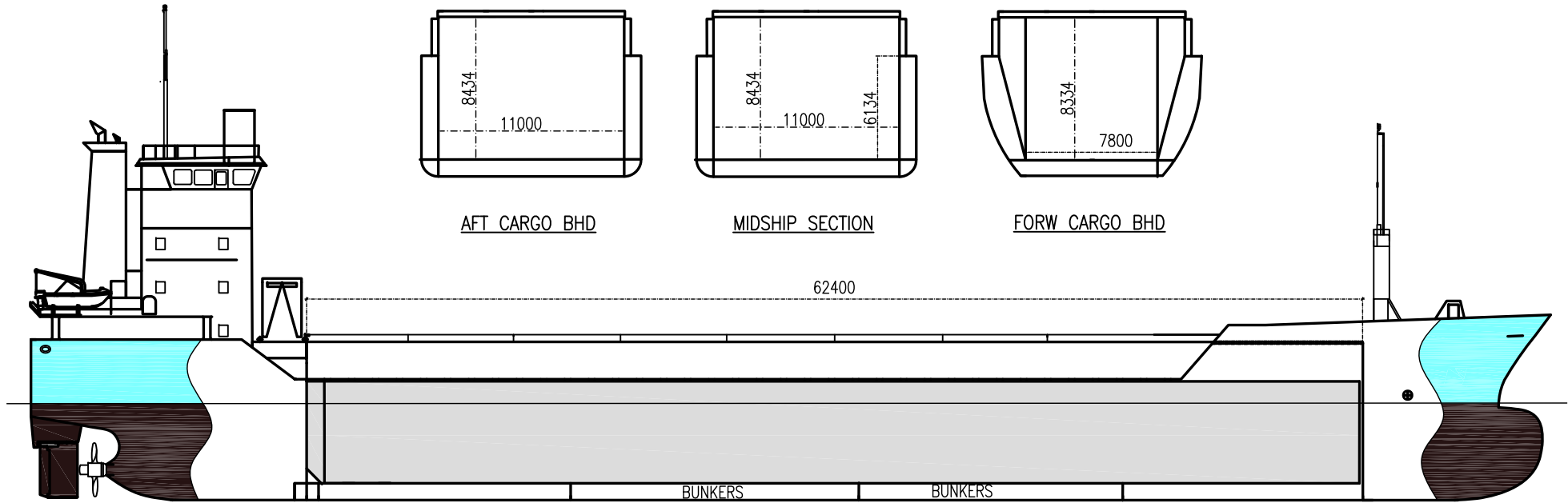




MV OSLO

DEADWEIGHT GROUP
4000 dwt





If not otherwise specified :
Dist/Dim in meters
Weights in m.tons

All details given in good faith without guarantee

OSLO

Ex. SAAR OSLO
DWT GROUP 4000
IMO NO 9125700
CALL SIGN V2DJ6
BUILD 12/1996
FLAG Antigua & Barbuda

Builders	Sanctiure Naval Galati, DSH Hoogezwaard
Classification	GL / 100 A5 E G SOLAS II Req 19 MC AUT
Length oa	89.90
Breadth mld	13.17
Depth mld	7.15
Draft summer	5.72
Deadweight summer draft	4218
Draft winter	5.60
Deadweight winter draft	4090
Gross tonnage	2805
Net tonnage	1568
Immersion(load draft) TPC	10.70
Mean draft of ship in heavy ballast	3.75
Distance from forward end of No.1 Hatch to aft end of last hatch	55.60
Hatch type	Pontoon type
Container (TEU) capacity Hold / Deck	117 / 96

Hatch details:

- a : Distance from waterline fully ballasted to top of hatch coamings
b : Distance from waterline fully loaded to top of hatch coamings
c : Distance from tank top to top of hatch coamings
d : Max permissible loading on hatch covers
e : Distance from ship's rail to inside hatch coamings
f : Height of hatch coamings
g : Hatch opening
h : No. of Loadingholes on hatchcovers X diameter in mm

Remarks :

- Two movable bulkheads, max 3 compartments.
Hold dimension without bulkheads is 62,48 x 11,00 x 8,43.
Hold capacity grain/bale without bulkheads is 201.921 cbft.
Strengthened for heavy cargo, equip. for carri. of cont.

Max permissible load on deck, mt/sqm	-
Max permissible load on tanktop, mt/sqm	18.00
Max air draft - 1	25.75
Max air draft - 2	-
Distance from keel to top antenna -1	29.50
Distance from keel to top antenna -2	-
Water ballast capacity	1 627.00
Fuel main engine - capa.(cbm)	220.14
Fuel aux engine - capa.(cbm)	52.70
Speed service, knots	10.50
Cargo gear	No
Bow thruster	.220 Kw . Yes
Boxed	Yes
Double skin	Yes
Open hatch	Yes
Rhine fitted	No
Ammonium Nitrate fitted	Yes
FeSi fitted	Yes

Htch#	Bale							Grain				Hold dimensions	Compartm :		Communication :		Equipment		
	a	b	c	d	e	f	g	h	Hold#	cbm	cbft		cbm	cbft	#	cbm		Type	No
1	5.70	3.74	8.30	1.60	1.20	2.30	62.48 x 11.00	0	1	5592	197 487	5592	197 487	61,78 x 11,00 x 8,43	a	487	Telex 1	430 401 589	
															b	301	Telex 2	430 401 590	
															c	790	Tlph 1	008816 2145 4287	Inmarsat
															d	1 177	Tlph 2	+49 171 482 48 56	Gsm
															e	527	Fax		
															f	593	Email	master.oslo@telaurus.net	
															g	1 151	Email	mv-oslo@les-raisting.de	
															h	341			
															i	260			