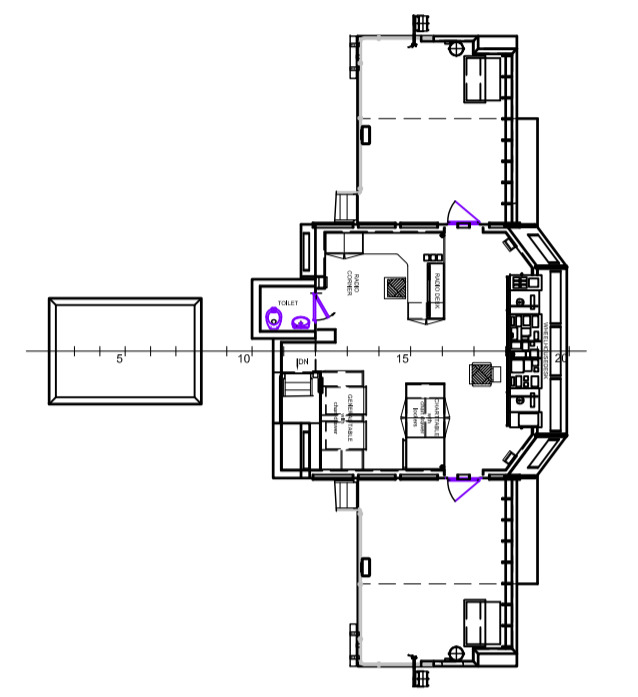
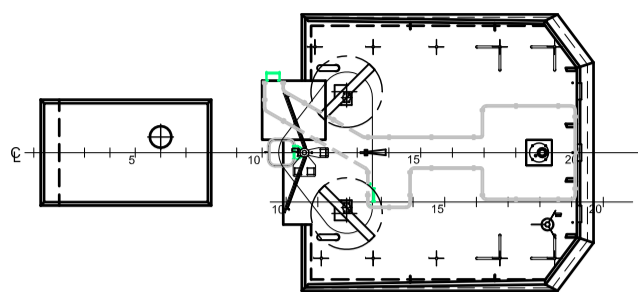
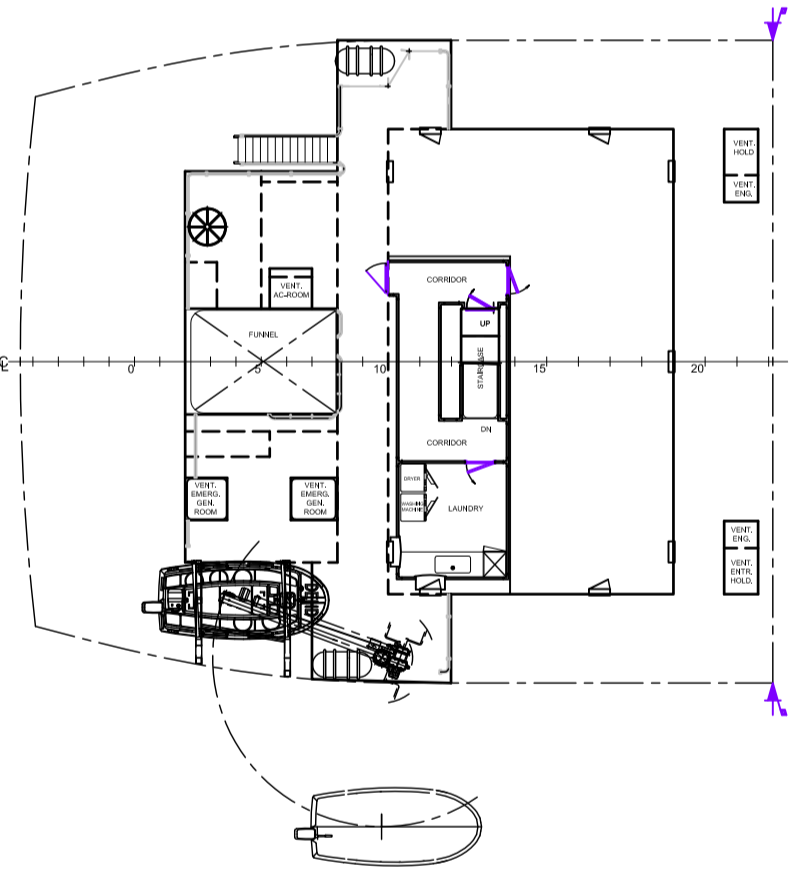


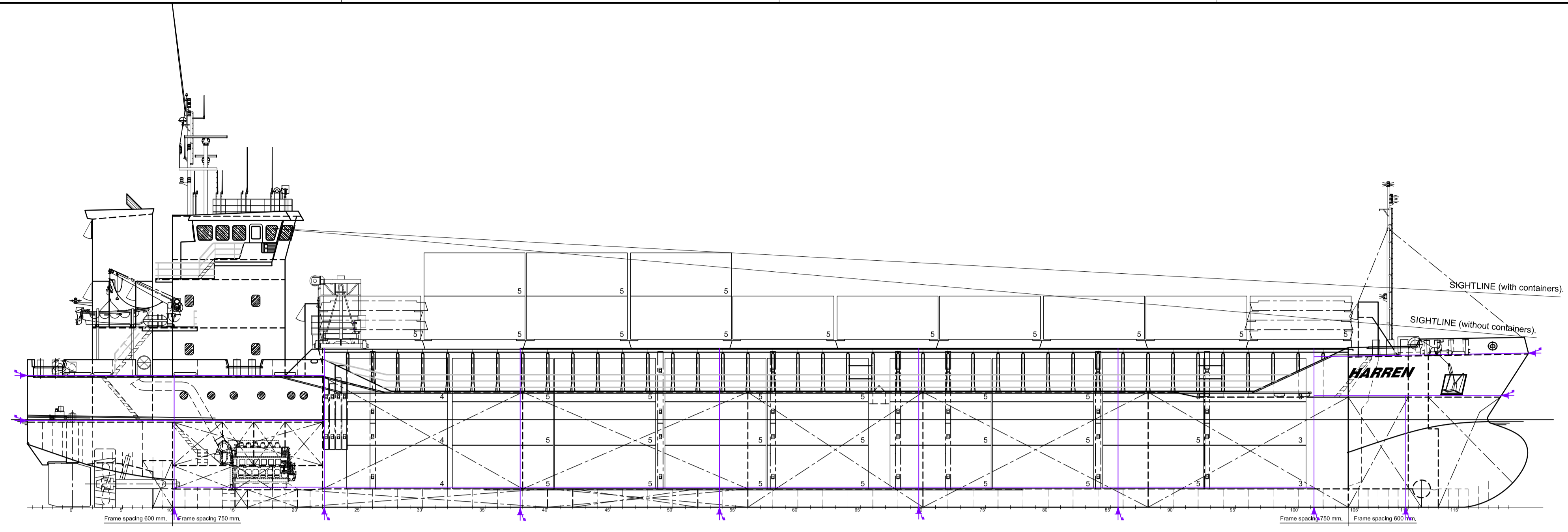
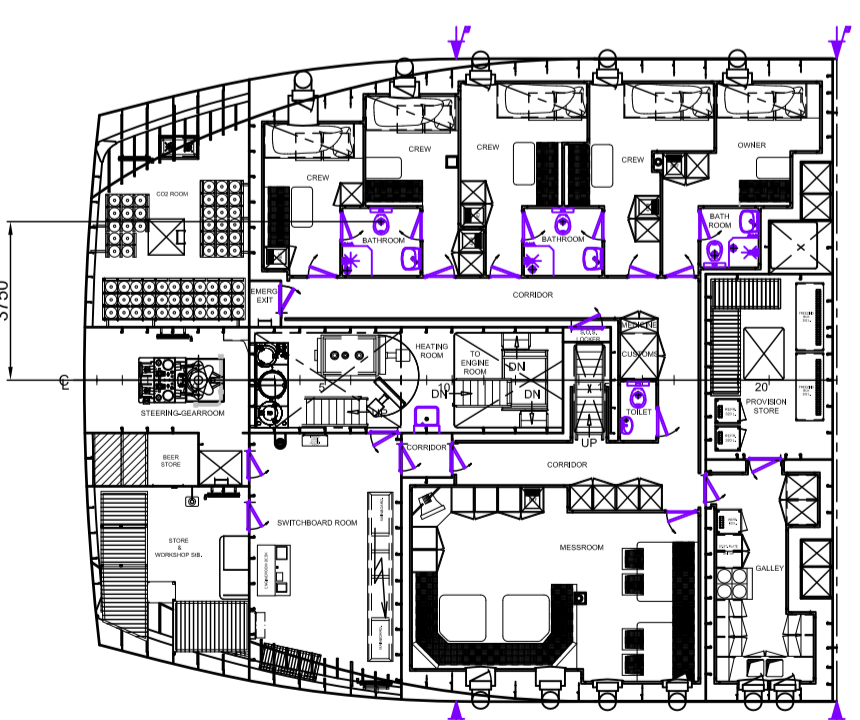
TOPDECK



BOATDECK

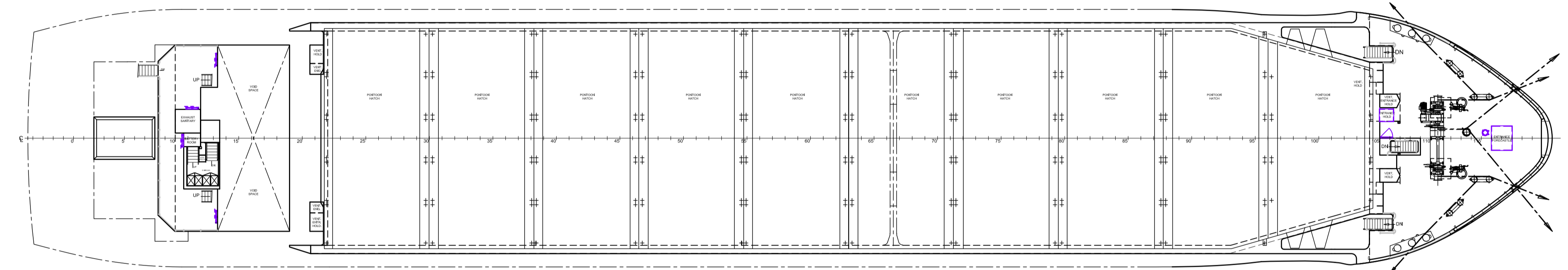


TWEENDECK

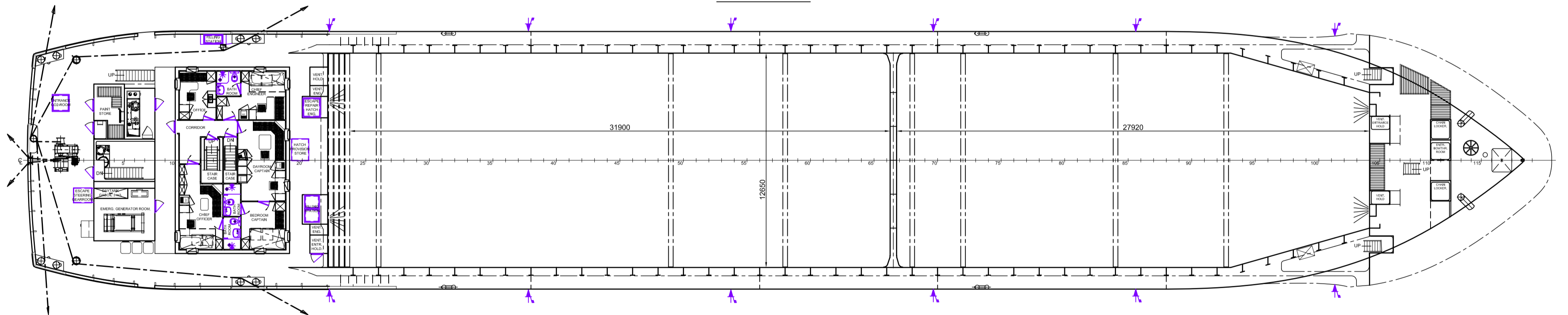


VOIDDECK

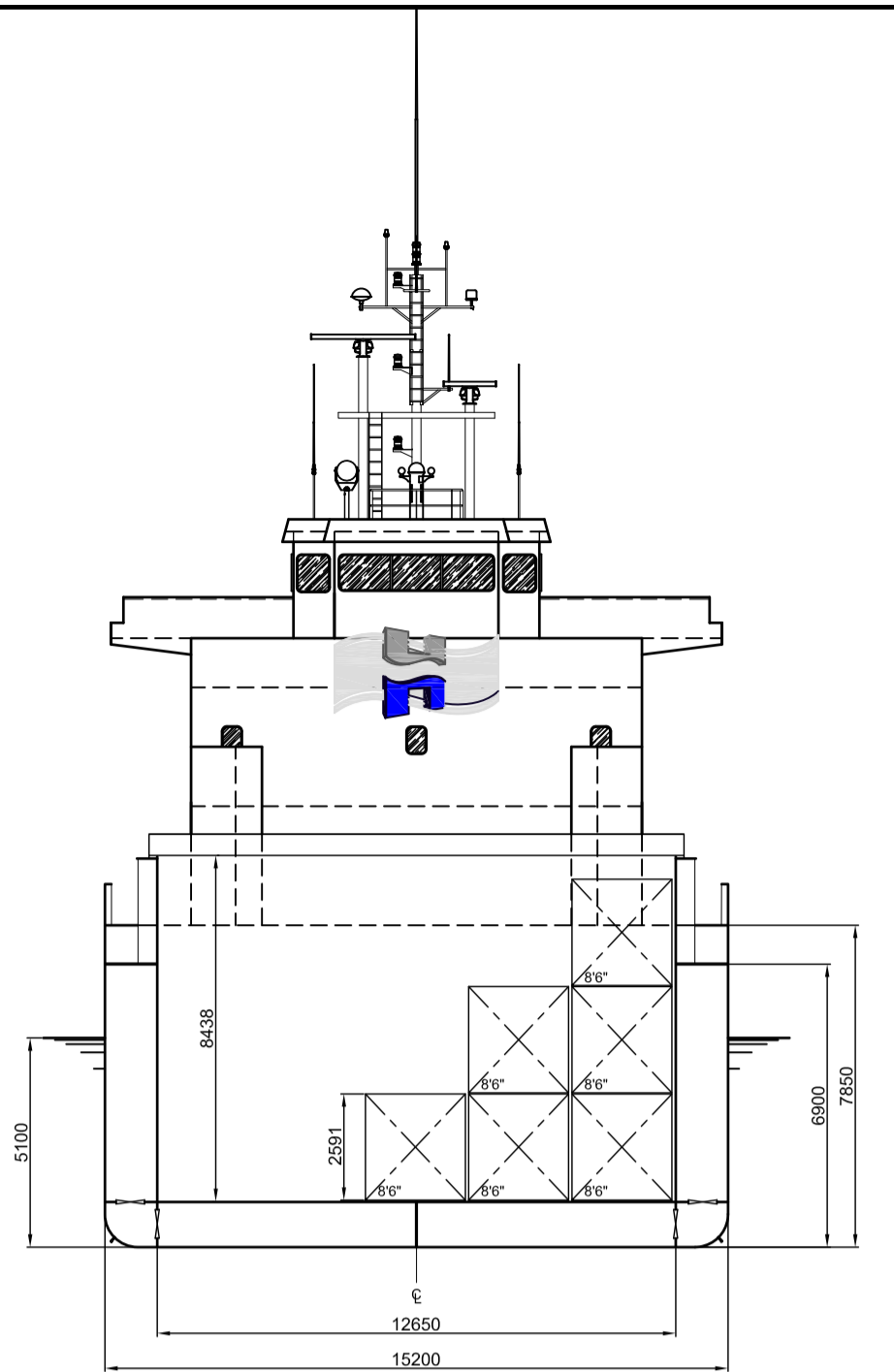
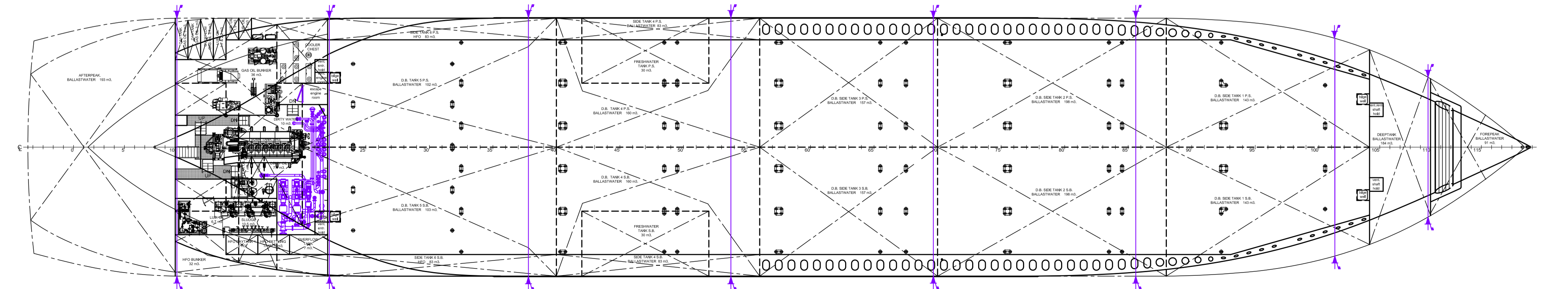
FORECASTLEDECK



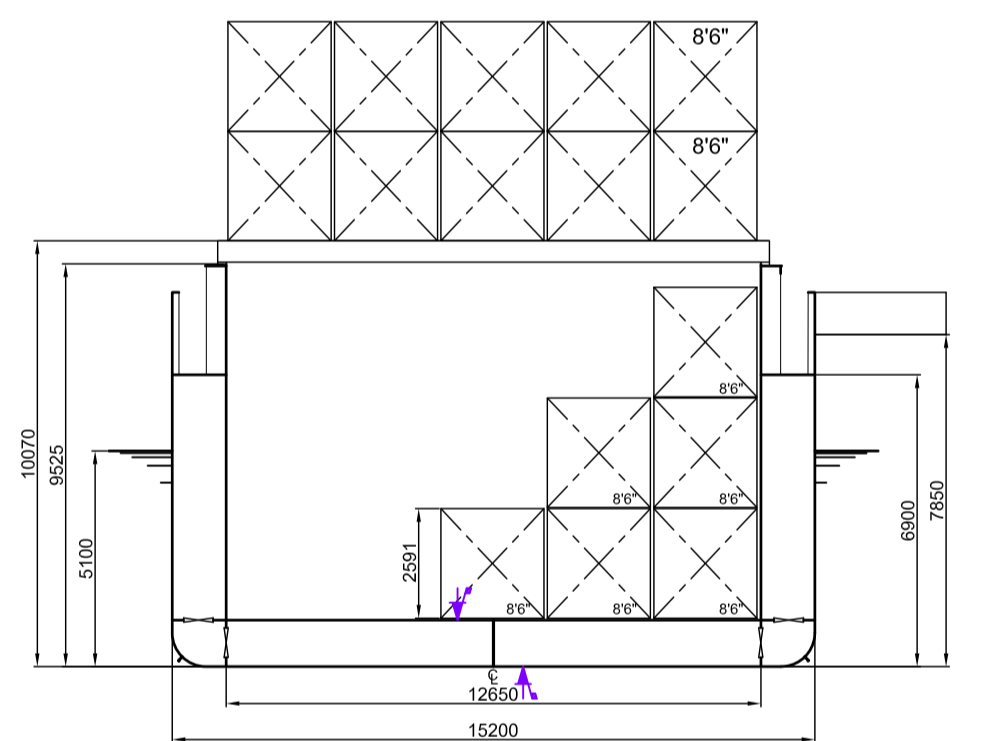
MAINDECK



TANKTOP



CROSS SECTION.



MAIN PARTICULARS.

LENGTH over all	59.98 m
LENGTH b.p.p.	54.98 m
BREADTH mld.	15.20 m
DEPTH to maindeck	6.60 m
DRAFT	805.525 m
DEADWEIGHT at summerdraft	405.4400 ton
CONTAINER CAPACITY (maximum)	
IN HOLD:	126 TEU
ON HATCHES:	80 TEU
TOTAL:	206 TEU
CONTAINER CAPACITY (according sightline)	
IN HOLD:	126 TEU
ON HATCHES:	65 TEU
TOTAL:	191 TEU
TANK CAPACITY	
HFO:	216 m <sup>3</sup>
DIESEL:	36 m <sup>3</sup>
FRESHWATER:	60 m <sup>3</sup>
BALLASTWATER:	2008 m <sup>3</sup>
HOLD CAPACITY	225745 m <sup>3</sup>
TONNAGE (according conv. 1969)	3183 GT
CLASS: GERMANISCHER LLOYD	
CLASSIFICATION: H10/A2 E2	
SOLAS REG. 19- MC E2 AUT	
MULTIPURPOSE SHIP	
EQUIPPED FOR CARRIAGE OFF CONTAINERS	
STRENGTHENED FOR HEAVY CARGOES	

**BODEWES SHIPYARDS**

P.O. BOX 32, 9600 AA  
Wierkade 22, 9601 LG  
Hogezand, Netherlands  
Phone: 31 598-393131  
Fax: 31 598-396609  
E-mail: info@bodeswshipyards.nl  
Website: http://www.bodeswshipyards.nl

DRAWING DESCRIPTION: GENERAL ARRANGEMENT

PROJECT: Martin Hovenga

DATE: 05-01-2005

SHEET NO: 001

TOTAL SHEETS: 001

SCALE: 1:150

DATE: 05-01-2005

BY: [Signature]

CHECKED: [Signature]

APPROVED: [Signature]



# ODERTAL

If not otherwise specified :  
Dist/Dim in meters  
Weights in m.tons

All details given in good faith without guarantee

**DWT GROUP** 4000  
**IMO NO** 9404235  
**CALL SIGN** V2CW4  
**BUILD** 08/2007  
**FLAG** Antigua & Barbuda

<b>Builders</b> .....	
<b>Classification</b> .....	GL / +100 A5 E2 Solas II-2 Req.19 MC E AUT
<b>Length oa</b> .....	89.98
<b>Breadth mld</b> .....	15.20
<b>Depth mld</b> .....	6.60
<b>Draft summer</b> .....	5.25
<b>Deadweight summer draft</b> .....	4507
<b>Draft winter</b> .....	5.14
<b>Deadweight winter draft</b> .....	4335
<b>Gross tonnage</b> .....	3183
<b>Net tonnage</b> .....	1765
<b>Immersion(load draft) TPC</b> .....	12.00
<b>Mean draft of ship in heavy ballast</b> .....	4.20
<b>Distance from forward end of No.1 Hatch to aft end of last hatch</b> .....	61.50
<b>Hatch type</b> .....	Pontoon type
<b>Container (TEU) capacity Hold / Deck</b> .....	126 / 65

<b>Max permissible load on deck, mt/sqm</b> .....	1.60
<b>Max permissible load on tanktop, mt/sqm</b> .....	15.00
<b>Max air draft - 1</b> .....	27.30
<b>Max air draft - 2</b> .....	-
<b>Distance from keel to top antenna -1</b> .....	31.50
<b>Distance from keel to top antenna -2</b> .....	-
<b>Water ballast capacity</b> .....	2 026.17
<b>Fuel main engine - capa.(cbm)</b> .....	216.00
<b>Fuel aux engine - capa.(cbm)</b> .....	36.00
<b>Speed service, knots</b> .....	11.00
<b>Cargo gear</b> .....	No
<b>Bow thruster</b> .....	Yes
<b>Boxed</b> .....	Yes
<b>Double skin</b> .....	Yes
<b>Open hatch</b> .....	Yes
<b>Rhine fitted</b> .....	No
<b>Ammonium Nitrate fitted</b> .....	Yes
<b>FeSi fitted</b> .....	Yes

**Hatch details:**

- a : Distance from waterline fully ballasted to top of hatch coamings
- b : Distance from waterline fully loaded to top of hatch coamings
- c : Distance from tank top to top of hatch coamings
- d : Max permissible loading on hatch covers
- e : Distance from ship's rail to inside hatch coamings
- f : Height of hatch coamings
- g : Hatch opening
- h : No. of Loadingholes on hatchcovers X diameter in mm

**Remarks :**

2 moveable bulkheads. Storage position in aft part of hold.  
Pontoon Hatch cover - 10 pieces.

Htch#	Bale							Grain				Hold dimensions	Compartm :		Communication :		Equipment		
	a	b	c	d	e	f	g	h	Hold#	cbm	cbft		cbm	cbft	#	cbm		Type	No
1	5.60	4.50	8.40	1.60	1.27	2.41	61.50 x 12.65	0	1	6325	223 367	6325	223 367	61.50 x 12.65 x 8.40			Telex 1		
																	Telex 2		
																	Tlph 1	+49 151 1429 0681	Gsm
																	Tlph 2		
																	Fax		
																	Email	odertal@h-fleet.com	