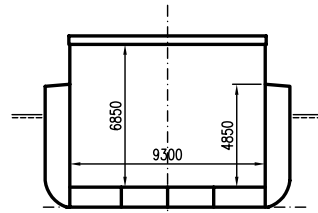
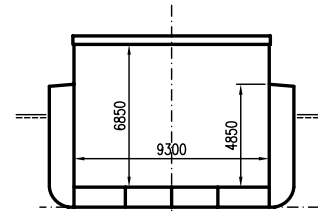


NESTOR

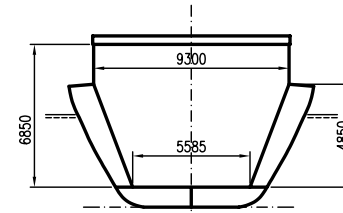
DEADWEIGHT GROUP
1850 – 2400 dwt



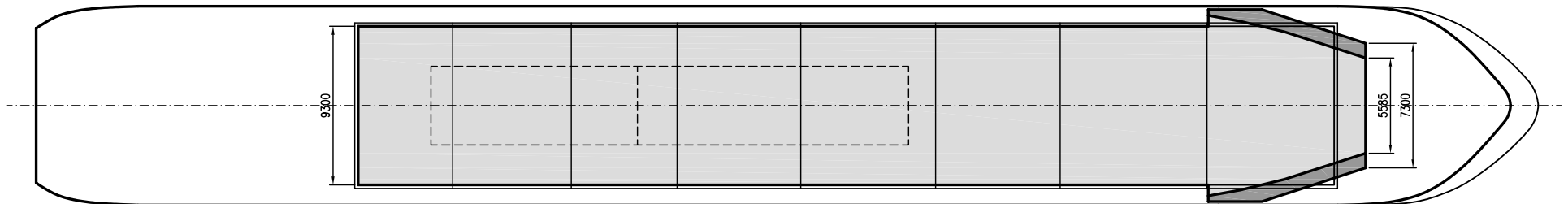
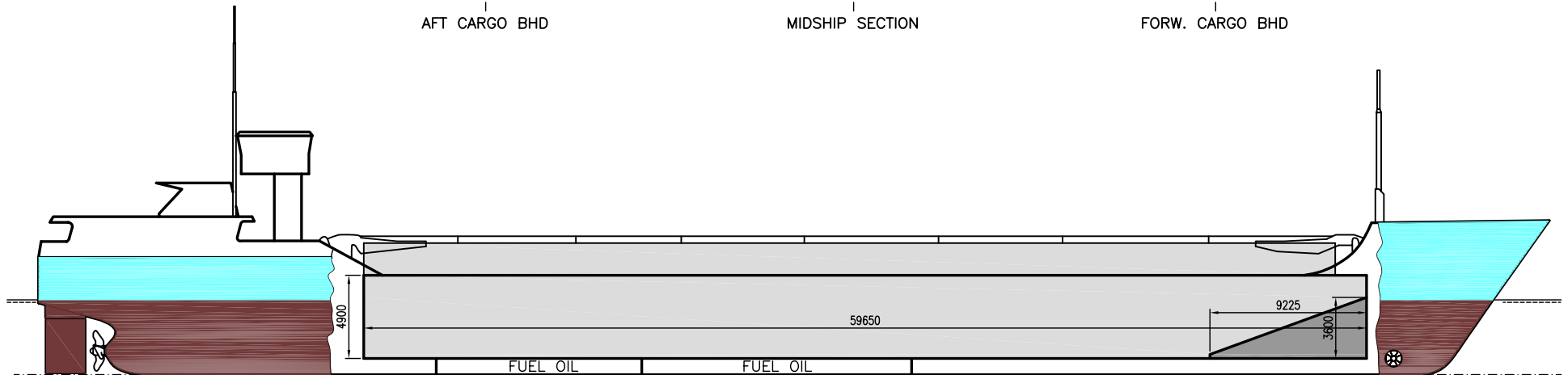
AFT CARGO BHD



MIDSHIP SECTION



FORW. CARGO BHD





NESTOR

If not otherwise specified :
Dist/Dim in meters
Weights in m.tons

All details given in good faith without guarantee

DWT GROUP 1850-2400
IMO NO 9234305
CALL SIGN V2AA8
BUILD 11/2000
FLAG Antigua & Barbuda

Builders Tulcea Shipyard, Tulcea, Romania
Classification BV / BV I 3/3 E AUT MC Fin/Swe Ice Class 1B
Length oa 89.71
Breadth mld 11.65
Depth mld 5.80
Draft summer 4.48
Deadweight summer draft 2460
Draft winter 4.38
Deadweight winter draft 2370
Gross tonnage 1846
Net tonnage 1081
Immersion(load draft) TPC 10.00
Mean draft of ship in heavy ballast 3.20
Distance from forward end of No.1 Hatch to aft end of last hatch 57.81
Hatch type Kvaerner Multifold crocodile, with hydraulic control
Container (TEU) capacity Hold / Deck 52 / 72

Max permissible load on deck, mt/sqm 1.50
Max permissible load on tanktop, mt/sqm 15.00
Max air draft - 1 19.88
Max air draft - 2 8.48
Distance from keel to top antenna -1 23.00
Distance from keel to top antenna -2 11.60
Water ballast capacity 1 100.00
Fuel main engine - capa.(cbm) 140.00
Fuel aux engine - capa.(cbm) -
Speed service, knots 11.00
Cargo gear No
Bow thruster 260.HP. Yes
Boxed No
Double skin Yes
Open hatch Yes
Rhine fitted Yes
Ammonium Nitrate fitted Yes
FeSi fitted Yes

Hatch details:

- a : Distance from waterline fully ballasted to top of hatch coamings
b : Distance from waterline fully loaded to top of hatch coamings
c : Distance from tank top to top of hatch coamings
d : Max permissible loading on hatch covers
e : Distance from ship's rail to inside hatch coamings
f : Height of hatch coamings
g : Hatch opening
h : No. of Loadingholes on hatchcovers X diameter in mm

Remarks :

- Vessel fitted with 2 movable bulkheads, 8 different positions.
Free length on tanktop with both bulkheads in aft storage position about 58.50m.

Htch#	Bale							Grain				Hold dimensions	Compartment :		Communication :		Equipment		
	a	b	c	d	e	f	g	h	Hold#	cbm	cbft		cbm	cbft	#	cbm		Type	No
1	4.68	3.32	6.85	1.56	1.18	2.00	57.81 x 9.30	0	1	3582	126 512	3674	129 748	57.81 x 9.30 x 6.85	1	562	Telex 1	430 402 143	Inmarsat
															2	196	Telex 1	430 402 144	Inmarsat
															3	430	Tlph 1	+49 172 450 1651	Gsm
															4	851	Telex 2	N/A	
															5	92	Fax	N/A	
															6	700	Email	charterers.nestor@amosconnect.com	
															7	508			
															8	196			
															9	226			