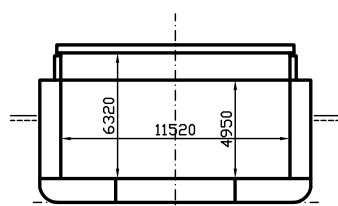
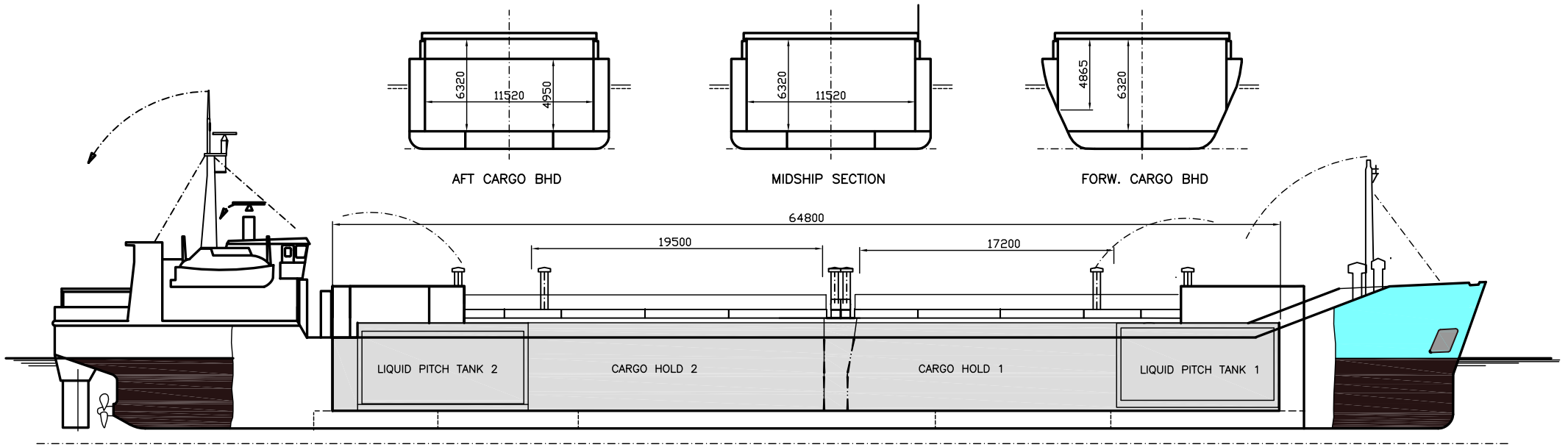


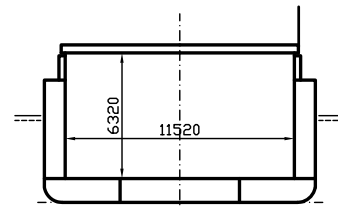
# LINDO

DEADWEIGHT GROUP

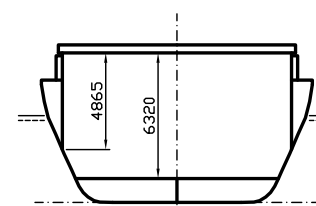
3250 dwt



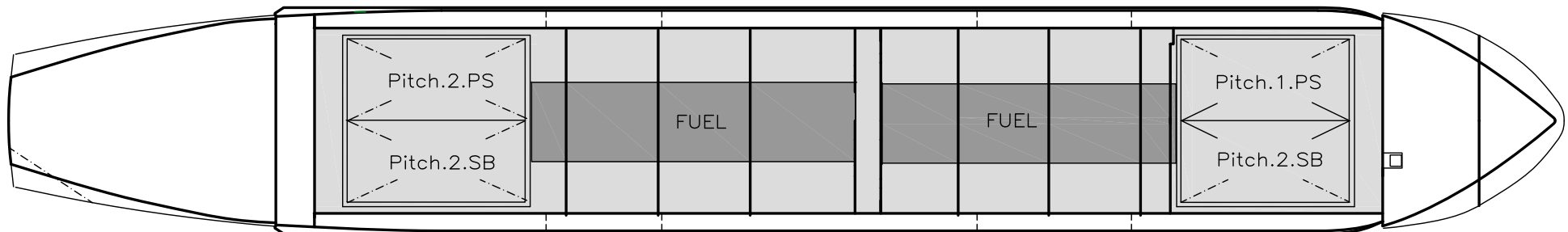
AFT CARGO BHD



MIDSHIP SECTION



FORW. CARGO BHD





# LINDO

If not otherwise specified :  
Dist/Dim in meters  
Weights in m.tons

All details given in good faith without guarantee

DWT GROUP 3250  
IMO NO 8028527  
CALL SIGN 8PWE  
BUILD 1982  
FLAG Barbados

Builders ..... Mjellem & Karlsen, Bergen  
Classification ..... DNV / +1A1 Ice C EO  
Length oa ..... 97.95  
Breadth mld ..... 13.70  
Depth mld ..... 6.20  
Draft summer ..... 4.80  
Deadweight summer draft ..... 3580  
Draft winter ..... 4.70  
Deadweight winter draft ..... 3458  
Gross tonnage ..... 2495  
Net tonnage ..... 1032  
Immersion(load draft) TPC ..... 12.18  
Mean draft of ship in heavy ballast ..... 3.54  
Distance from forward end of No.1 Hatch to aft end of last hatch ..... 64.80  
Hatch type ..... Mac Gregor Folding type  
Container (TEU) capacity Hold / Deck ..... 50 / -

#### Hatch details:

a : Distance from waterline fully ballasted to top of hatch coamings  
b : Distance from waterline fully loaded to top of hatch coamings  
c : Distance from tank top to top of hatch coamings  
d : Max permissible loading on hatch covers  
e : Distance from ship's rail to inside hatch coamings  
f : Height of hatch coamings  
g : Hatch opening  
h : No. of Loadingholes on hatchcovers X diameter in mm

#### Remarks :

2 liquid pitch tanks forward, each 244.3 cbm.  
2 liquid pitch tanks aft, each 259.8 cbm.

Max permissible load on deck, mt/sqm ..... 1.25  
Max permissible load on tanktop, mt/sqm ..... 6.00  
Max air draft - 1 ..... 28.93  
Max air draft - 2 ..... -  
Distance from keel to top antenna -1 ..... 30.64  
Distance from keel to top antenna -2 ..... -  
Water ballast capacity ..... 1 778.80  
Fuel main engine - capa.(cbm) ..... 190.60  
Fuel aux engine - capa.(cbm) ..... 56.90  
Speed service, knots ..... 10.00  
Cargo gear ..... No  
Bow thruster ..... 150 KW ..... Yes  
Boxed ..... Yes  
Double skin ..... Yes  
Open hatch ..... Yes  
Rhine fitted ..... No  
Ammonium Nitrate fitted ..... No  
FeSi fitted ..... No

Htch#	Bale							Grain				Hold dimensions	Compartment :		Communication :		Equipment	
	a	b	c	d	e	f	g	h	Hold#	cbm	cbft		cbm	cbft	#	cbm		Type
1	4.14	2.74	6.32	1.25	1.09	1.34	19.52 x 11.52	1	2869	101 305	2869	101 305	39.40 x 11.52 x 6.32			Telex 1	431 126 710	Inmarsat
2	4.14	2.74	6.32	1.25	1.09	1.34	17.20 x 11.52									Telex 2		
																Tlph 1	+47 916 20 420	Gsm
																Fax		
																Email	lindo@gtw.dualog.com	