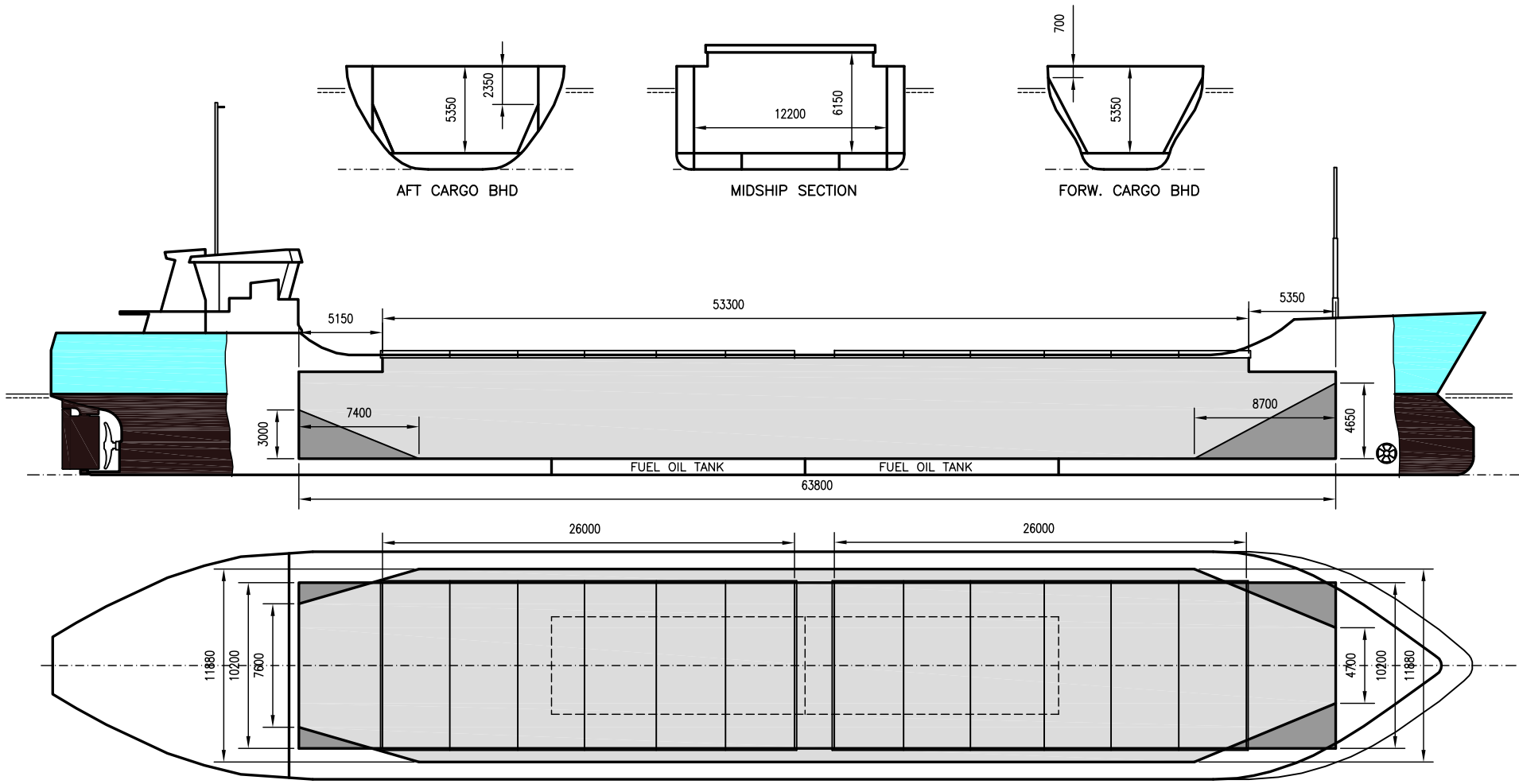


JUMBO

DEADWEIGHT GROUP
 3500 dwt





JUMBO

If not otherwise specified :
Dist/Dim in meters
Weights in m.tons

DWT GROUP 3500
IMO NO 8518297
CALL SIGN C6SA8
BUILD 1987
FLAG Bahamas

All details given in good faith without guarantee

Builders	Bodewes Scheepswerken BV
Classification	BV // I * HULL * MACH aen.carao. unrestr.nav. ICE
Length oa	88.15
Breadth mld	14.00
Depth mld	6.35
Draft summer	5.00
Deadweight summer draft	3697
Draft winter	4.90
Deadweight winter draft	3586
Gross tonnage	1998
Net tonnage	1217
Immersion(load draft) TPC	10.70
Mean draft of ship in heavy ballast	2.83
Distance from forward end of No.1 Hatch to aft end of last hatch	53.50
Hatch type	Pontoon type
Container (TEU) capacity Hold / Deck	- / -

Max permissible load on deck, mt/sqm	2.30
Max permissible load on tanktop, mt/sqm	12.00
Max air draft - 1	22.30
Max air draft - 2	-
Distance from keel to top antenna -1	26.70
Distance from keel to top antenna -2	-
Water ballast capacity	1 160.00
Fuel main engine - capa.(cbm)	204.00
Fuel aux engine - capa.(cbm)	-
Speed service, knots	10.50
Cargo gear	No
Bow thruster	Yes
Boxed	No
Double skin	Yes
Open hatch	No
Rhine fitted	No
Ammonium Nitrate fitted	Yes
FeSi fitted	Yes

Hatch details:

- a : Distance from waterline fully ballasted to top of hatch coamings
- b : Distance from waterline fully loaded to top of hatch coamings
- c : Distance from tank top to top of hatch coamings
- d : Max permissible loading on hatch covers
- e : Distance from ship's rail to inside hatch coamings
- f : Height of hatch coamings
- g : Hatch opening
- h : No. of Loadingholes on hatchcovers X diameter in mm

Remarks :

Vessel is designed for NAABSA condition.

Htch#								h	Hold#	Bale		Grain		Hold dimensions	Compartment :		Communication :		Equipment
	a	b	c	d	e	f	g			cbm	cbft	cbm	cbft		#	cbm	Type	No	
1	4.35	2.18	6.10	1.75	1.90	0.83	26.00 x 10.20	0	1	4455	157 319	4469	157 839	63.70 x 12.20 x 5.35	a	2 164	Telex 1	431 126 910	Inmarsat
2	4.35	2.18	6.10	1.75	1.90	0.83	26.00 x 10.20	0							b	2 304	Telex 2		
																	Tlph 1	+47 924 48 139	Gsm
																	Tlph 2		
																	Fax		
																	Email	jumbo@gtw.dualog.com	